

ANNUAL RULE 10 REPORT

OTOE COUNTY SCHOOL  
DISTRICT #501

PALMYRA-BENNET SCHOOL DISTRICT OR-1  
425 F STREET, BOX 130  
PALMYRA, NEBRASKA 68418  
(402) 780-5327

Prepared by:  
Clyde L. Childers  
Superintendent of Schools  
December 1, 2003

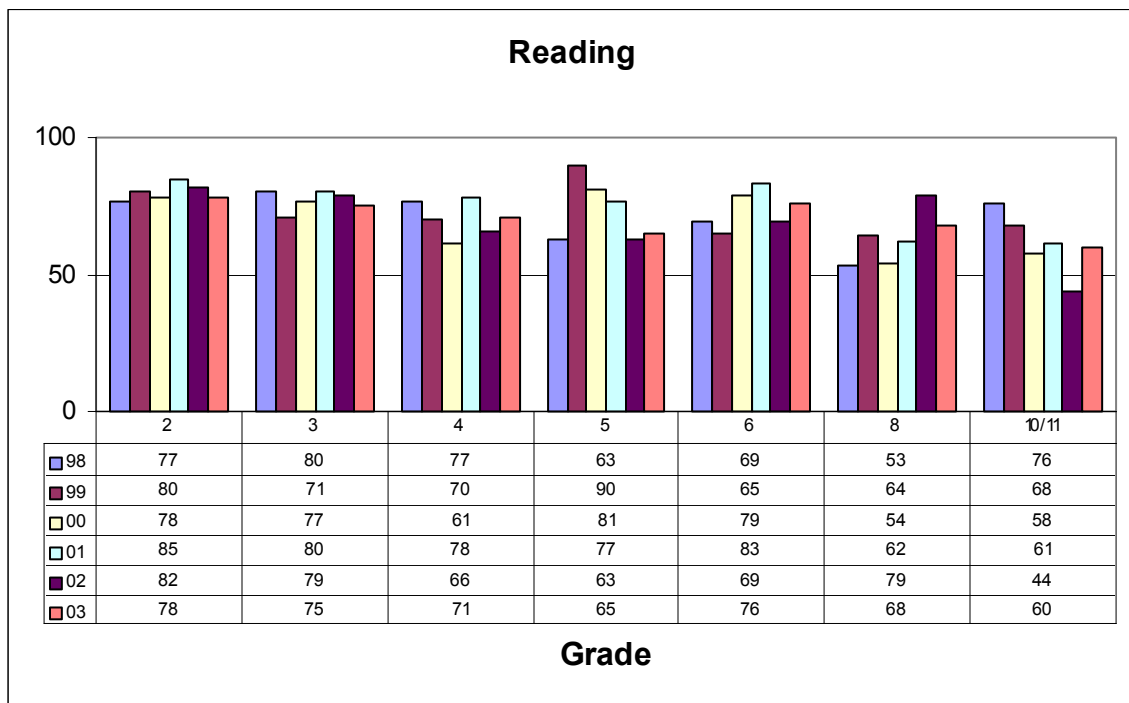
## INTRODUCTION

This report is required of school districts by the Nebraska State Department of Education in order for them to be in compliance with state accreditation standards. Each district in the state must report specific information to their patrons each year. Mandatory report topics are student progress, demographics, learning climate, and finance. The regulation also requires that the information be published and distributed to patrons. If you have any questions about these topics or others, please feel free to contact the school office.

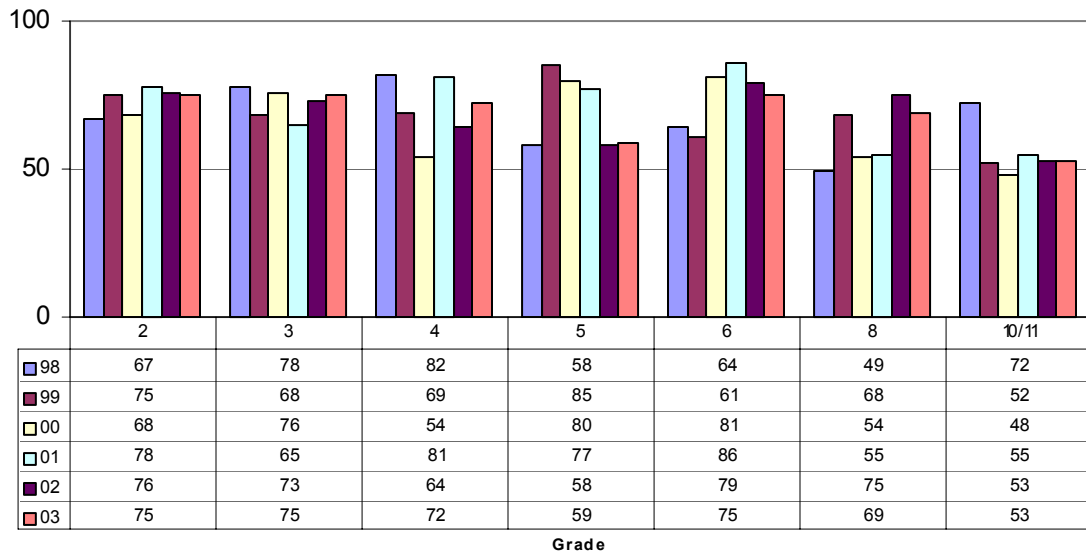
## STUDENT PERFORMANCE

Students in grades 2, 3, 4, 5, 6, 8 and 10 or 11 are tested each year with the nationally normed Comprehensive Test of Basic Skills (CTBS) to assess their academic progress. Annually in April, our students are tested in the areas of reading, math, language, science and social studies.

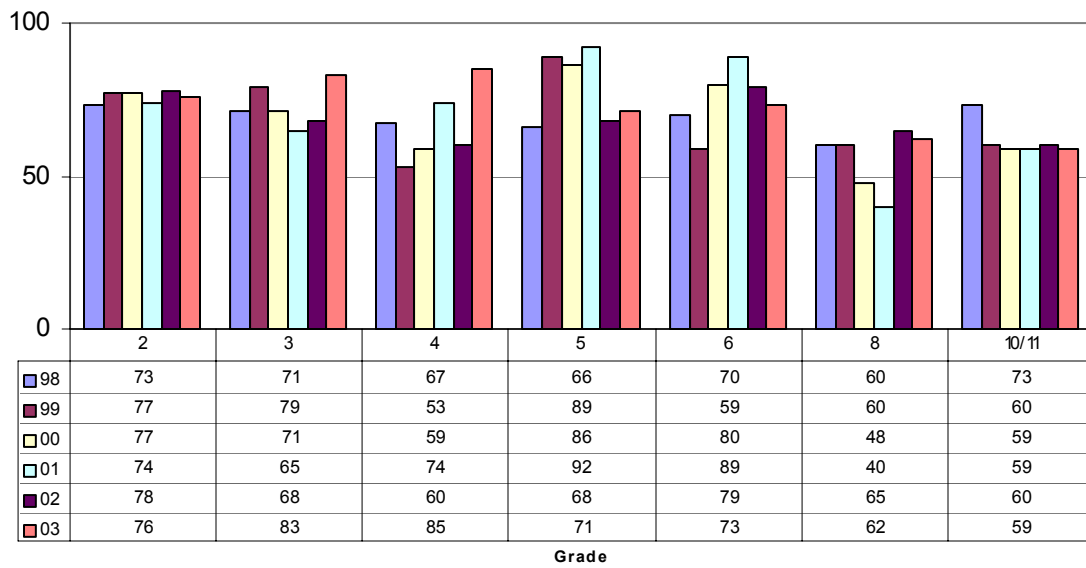
Test results are expressed in terms of percentile rank. For the 1997-98 thru 2002-03 school years the results are as follows:



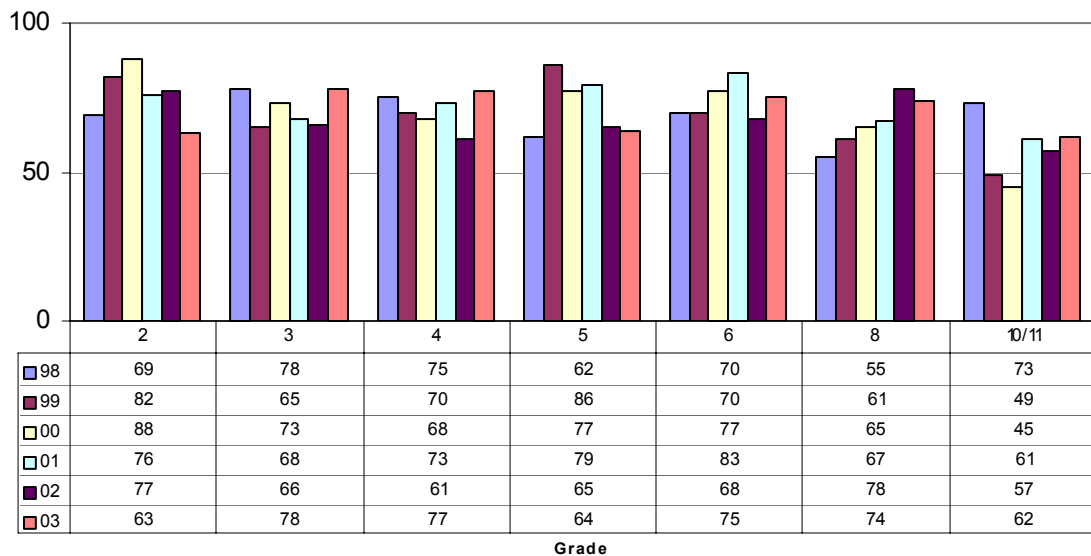
### Language



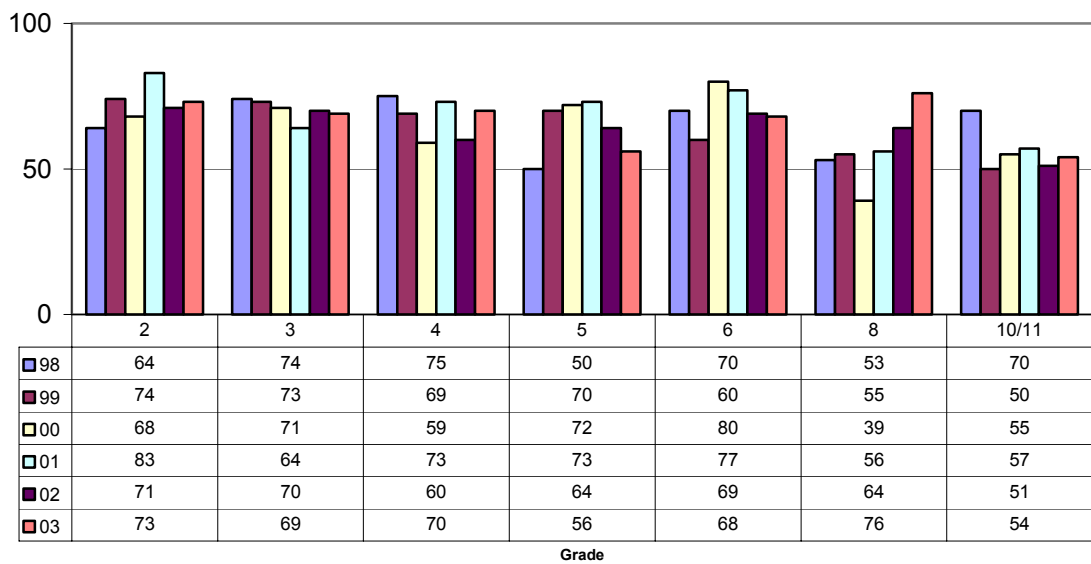
### Math

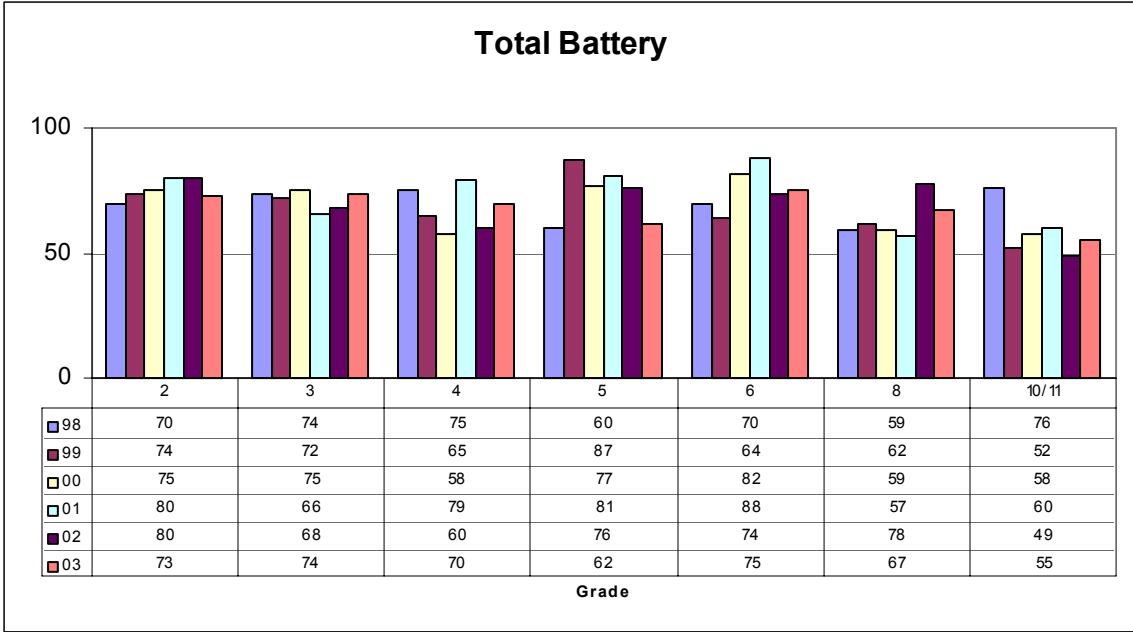


### Science



### Social Studies



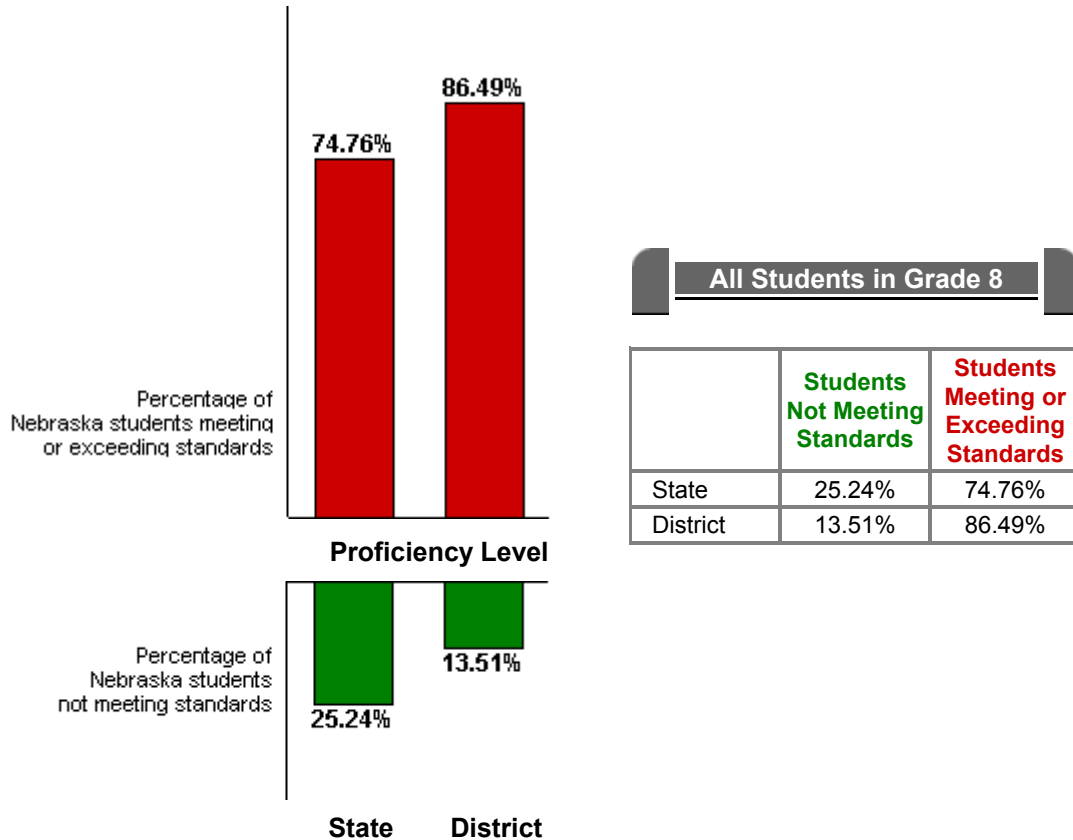


## Statewide Writing Assessment

All Students in Grade 8

2002-2003

The Statewide Writing Assessment results show the percentage of Nebraska 8th grade students who meet or exceed the state writing standards in 2002-2003.

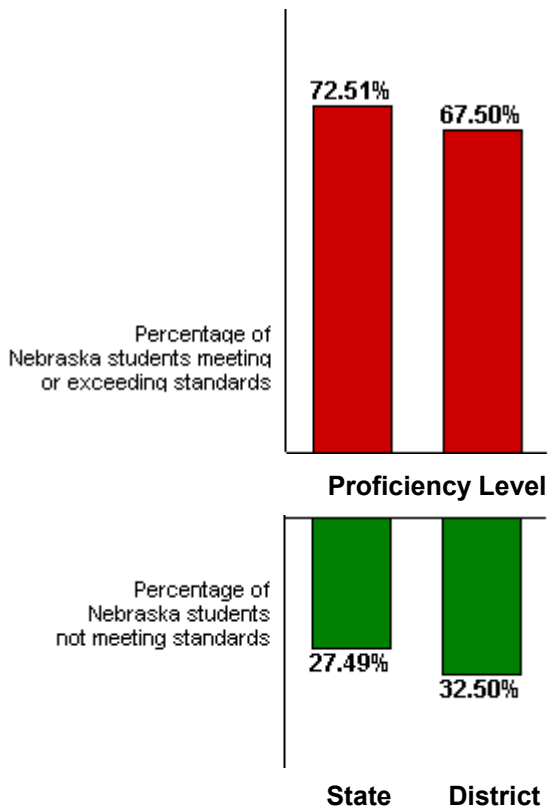


# Statewide Writing Assessment

All Students in Grade 4

2001-2002

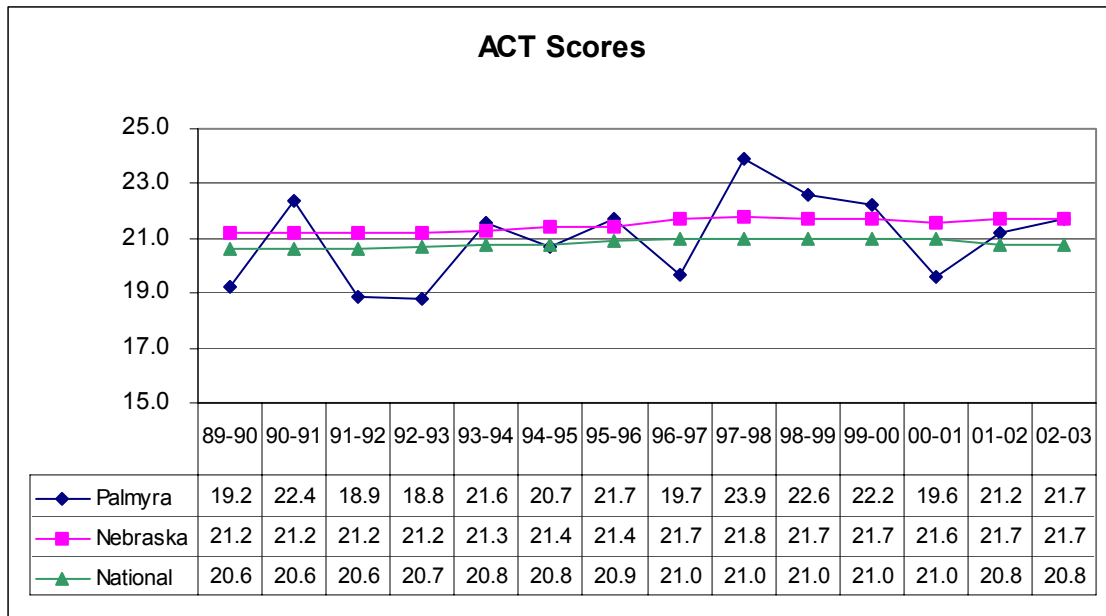
The Statewide Writing Assessment results show the percentage of Nebraska 4th grade students who meet or exceed the state writing standards in 2001-2002.



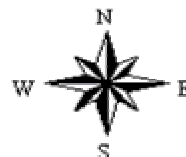
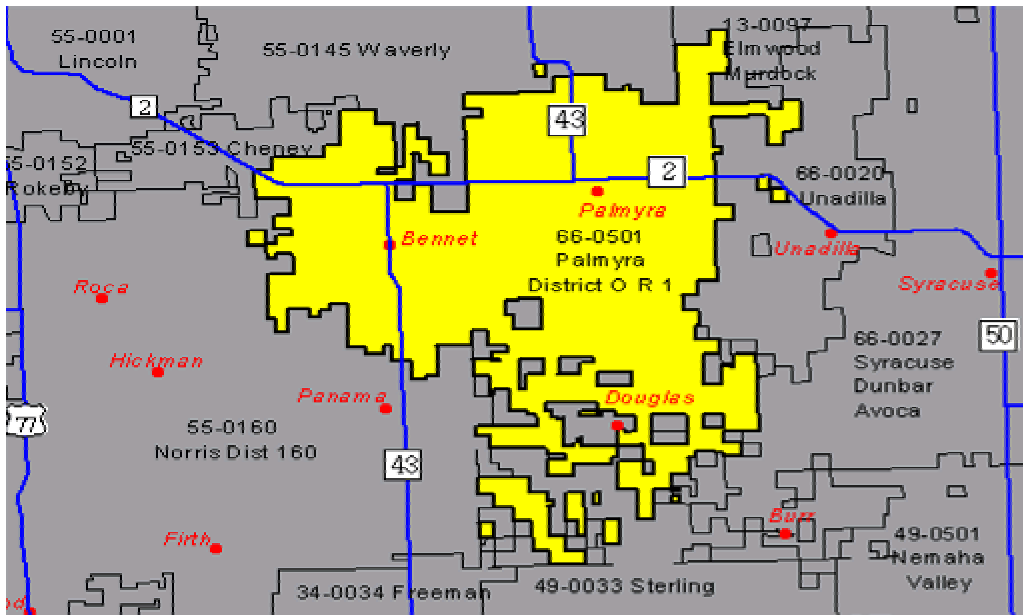
All Students in Grade 4

	Students Not Meeting Standards	Students Meeting or Exceeding Standards
State	27.49%	72.51%
District	32.50%	67.50%

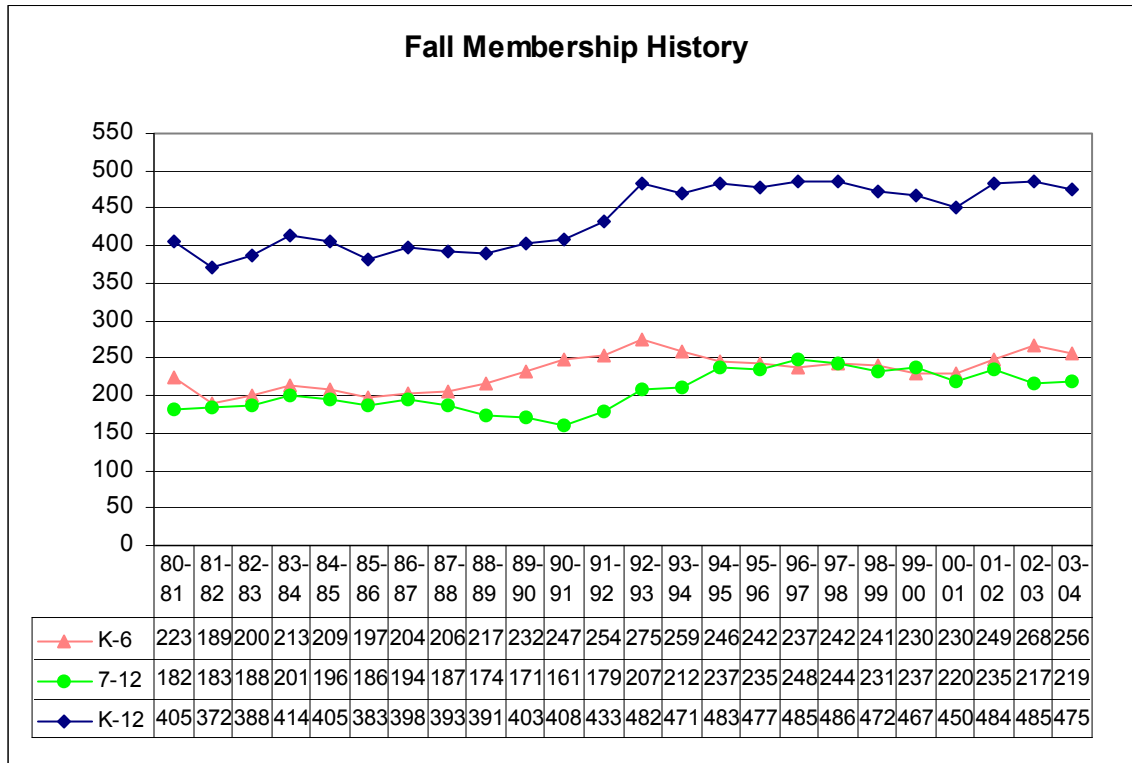
The following chart represents a 14-year history for District OR-1's ACT-tested graduates. ACT scores are intended to reflect those higher order thinking skills required to do successful work during the freshman year of college.



## SCHOOL DEMOGRAPHICS

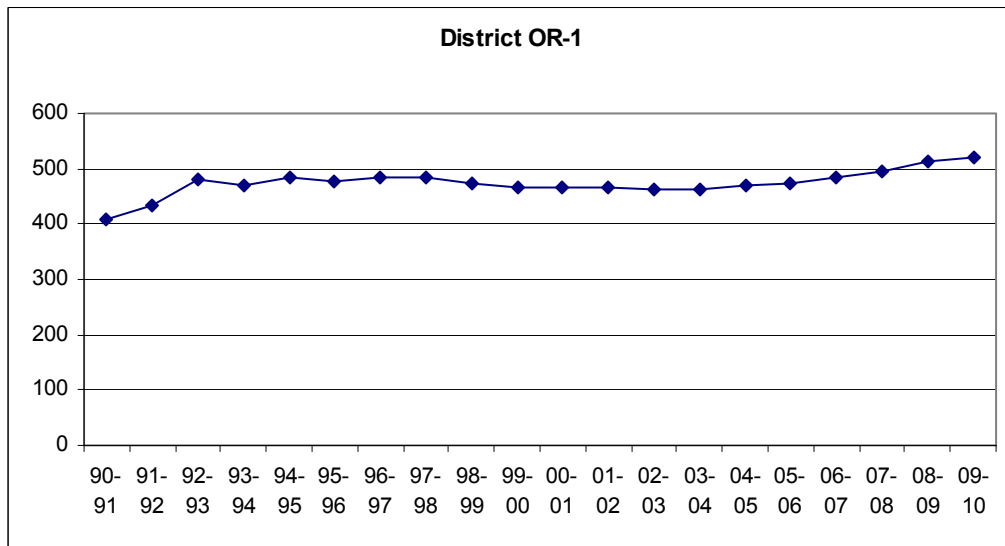


## ENROLLMENT--LAST FRIDAY IN SEPTEMBER

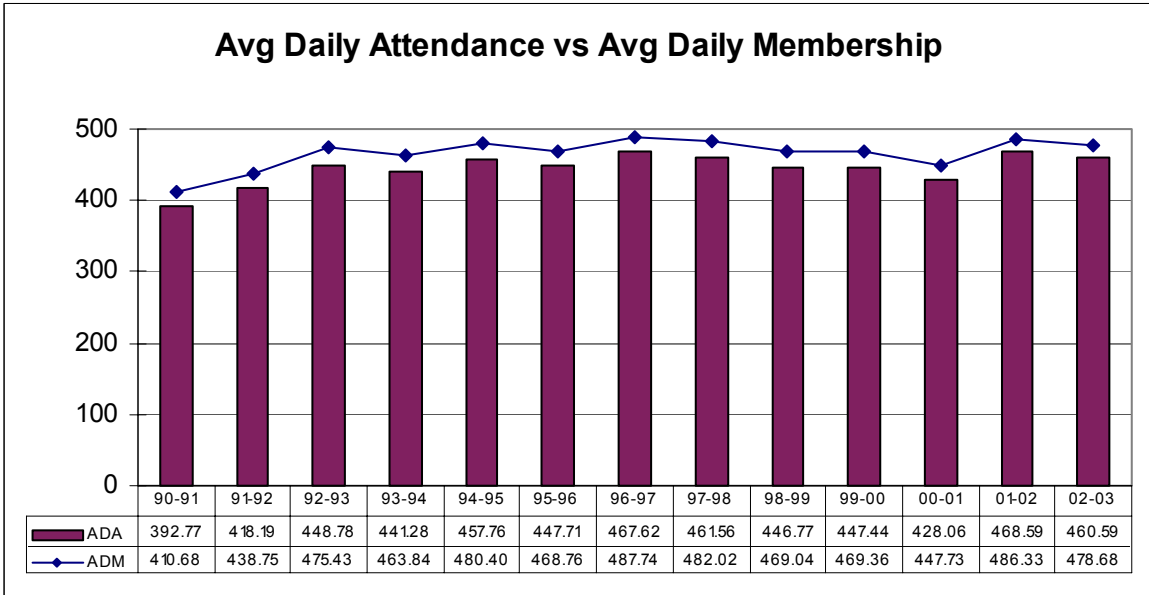
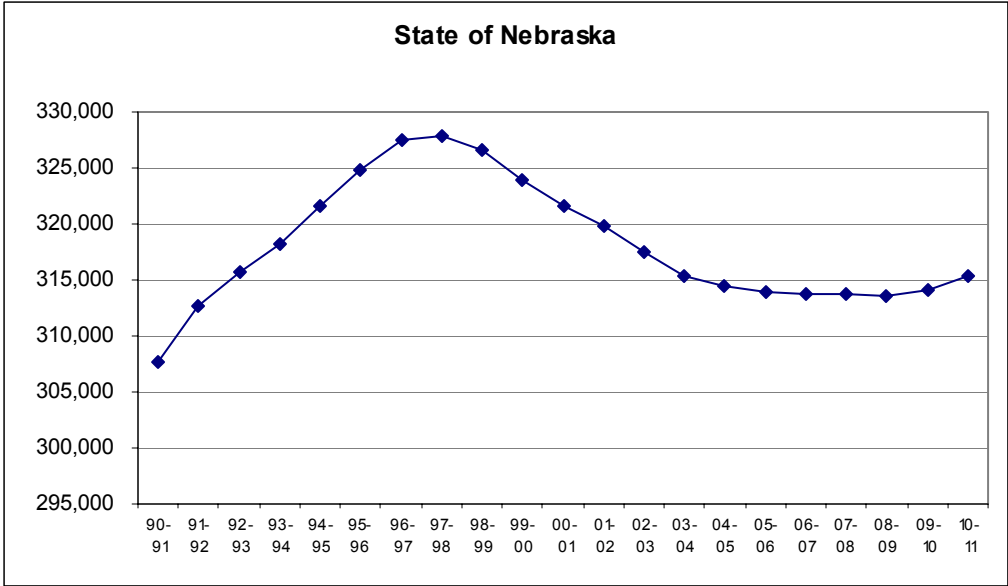


## ENROLLMENT PROJECTIONS

Statewide enrollment projections for public school districts in Nebraska indicate a peak enrollment in the 1997-98 school year with a steady decline anticipated for several years thereafter. District OR-1, on the other hand, is anticipating a modest, yet steady increase in enrollment during that same time period.







▶ District Characteristics & Ratings

## Student Characteristics 2002 - 2003

### Percentage of Nebraska students:

Characteristics	State Average	District Average
Eligible for free and reduced price meals	*32.41%	*18.56%
Moving in or out during the school year (mobility)	14.53%	6.19%
Learning the English language	4.95%	0.00%
Receiving special education services	14.78%	16.08%

\*Based on pre-kindergarten through 12th grade fall enrollment

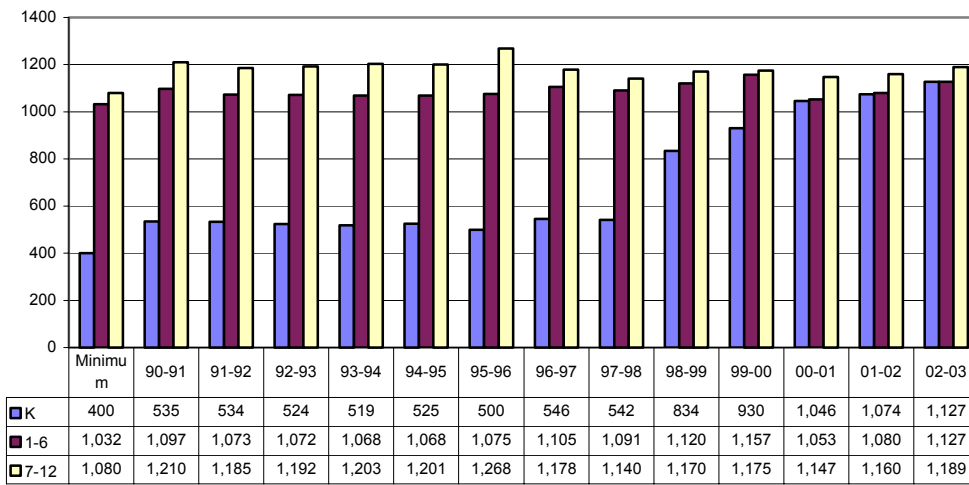
### Student Dropout Rate

	1992-1993	1997-1998	2001-2002
<b>State</b>	2.42%	3.00%	2.92%
<b>District</b>	2.42%	0.41%	2.98%

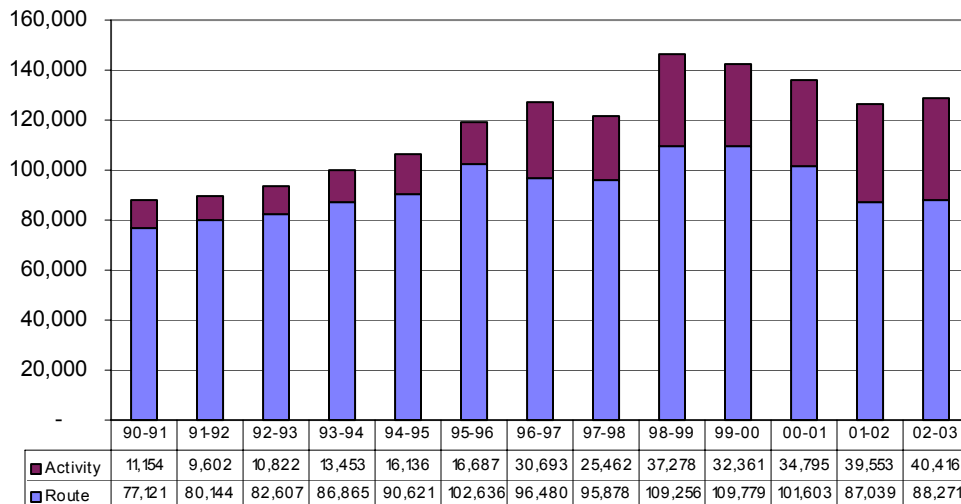
### Four-Year High School Graduation Rate

Years	State	District
<b>1998-1999</b>	84.09%	88.89%
<b>1999-2000</b>	84.93%	97.56%
<b>2000-2001</b>	83.78%	89.47%
<b>2001-2002</b>	84.24%	97.50%

### INSTRUCTIONAL HOURS



### Transportation Summary



## STAFF

During the 2002-03 school year, District OR-1 Public Schools was served by a Superintendent, two Principals, an Assistant HS Principal/Activities Director, and a professional teaching staff of forty-three.

### Average Teacher Salary

Years	State	District
1992-1993	\$28,826	\$24,288
1997-1998	\$32,520	\$30,324
2001-2002	\$36,236	\$33,135
2002-2003	\$37,881	\$33,366

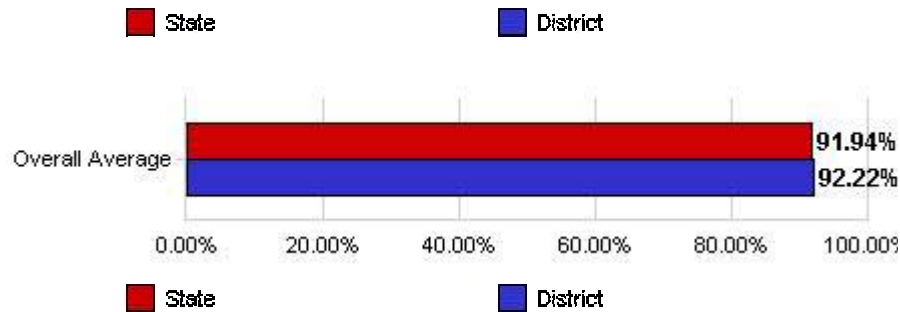
### Teachers with Master's Degrees

Years	State	District
1992-1993	33.91%	24.32%
1997-1998	36.47%	30.95%
2001-2002	36.64%	21.43%
2002-2003	37.30%	16.28%

### Average Years of Teaching Experience

Years	State	District
1987-1988	13.62	14.34
1992-1993	14.54	13.65
1997-1998	15.55	15.79
2001-2002	15.47	14.24
2002-2003	15.61	13.37

## High School Teachers Endorsed in the Subject Area They Teach 2002 - 2003



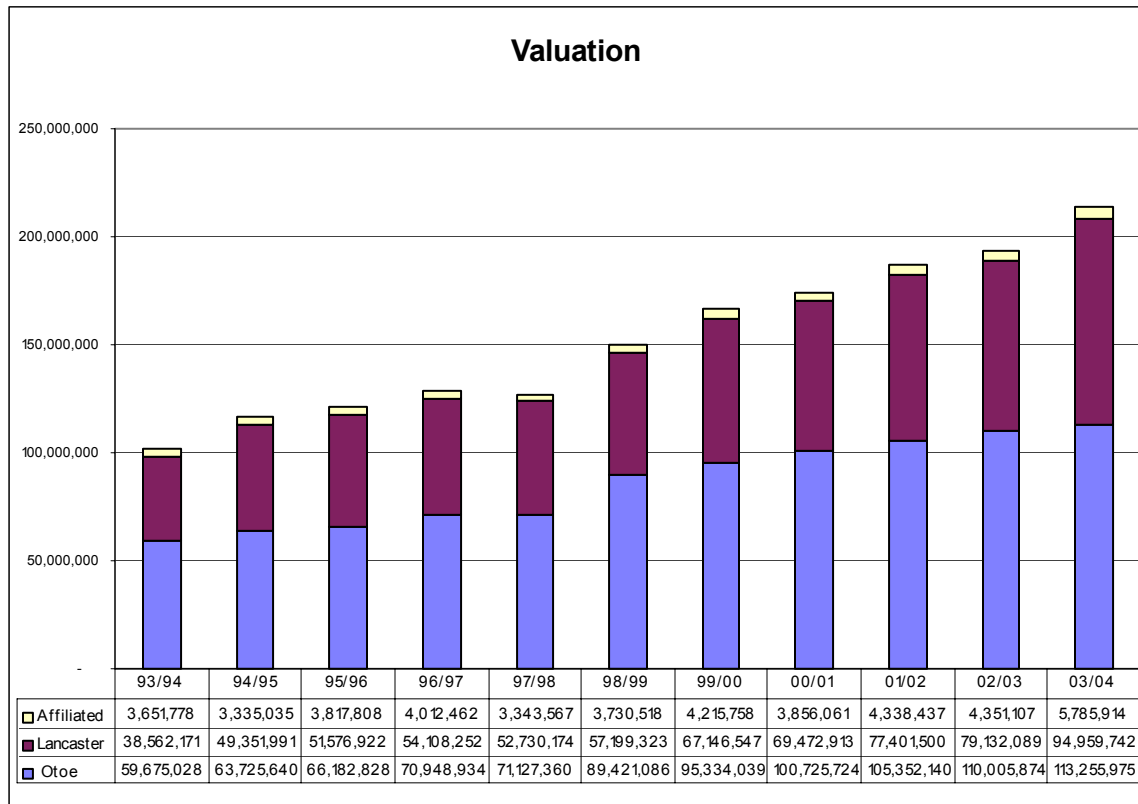
### High School Teachers Endorsed in the Subject Area They Teach

Subjects	State Average	District Average
Language Arts	88.38%	89.98%
Mathematics	96.19%	100.00%
Social Studies	91.92%	94.80%
Science	86.33%	62.50%
Foreign Language	89.67%	100.00%
Career and Technical Education	95.01%	100.00%
Health and Physical Education	89.57%	66.67%
Visual and Performing Arts	94.37%	100.00%
Computer Education	99.95%	100.00%
Overall Average	91.94%	92.22%

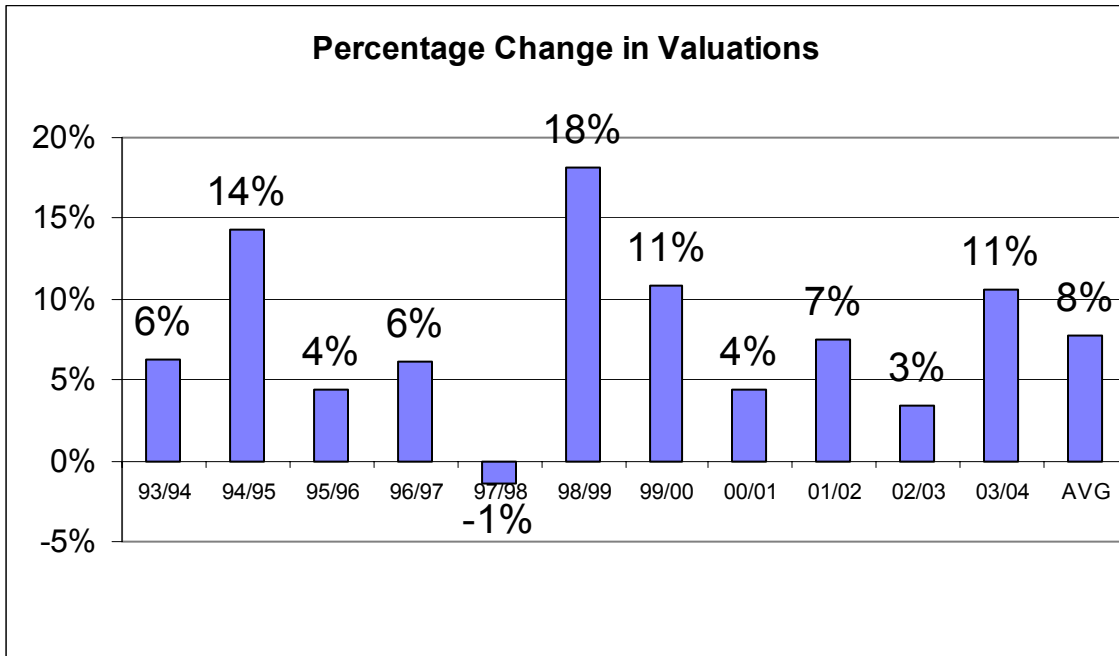
## FINANCIAL DATA

### DISTRICT VALUATION

District OR-1 property valuations have shown a significant increase over a period of time. The following graph and chart display those changes over a period of eleven years.

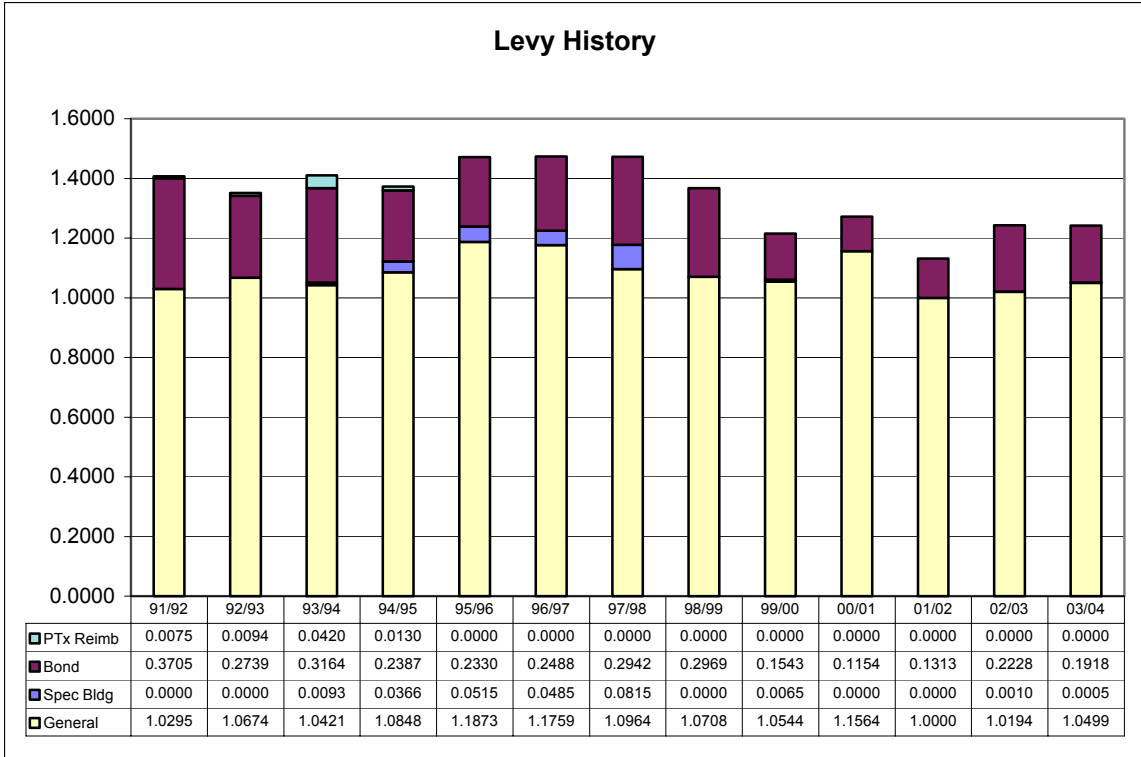


Despite the trend of increasing valuation, it remains difficult to predict annual growth in valuations as indicated on the following chart.



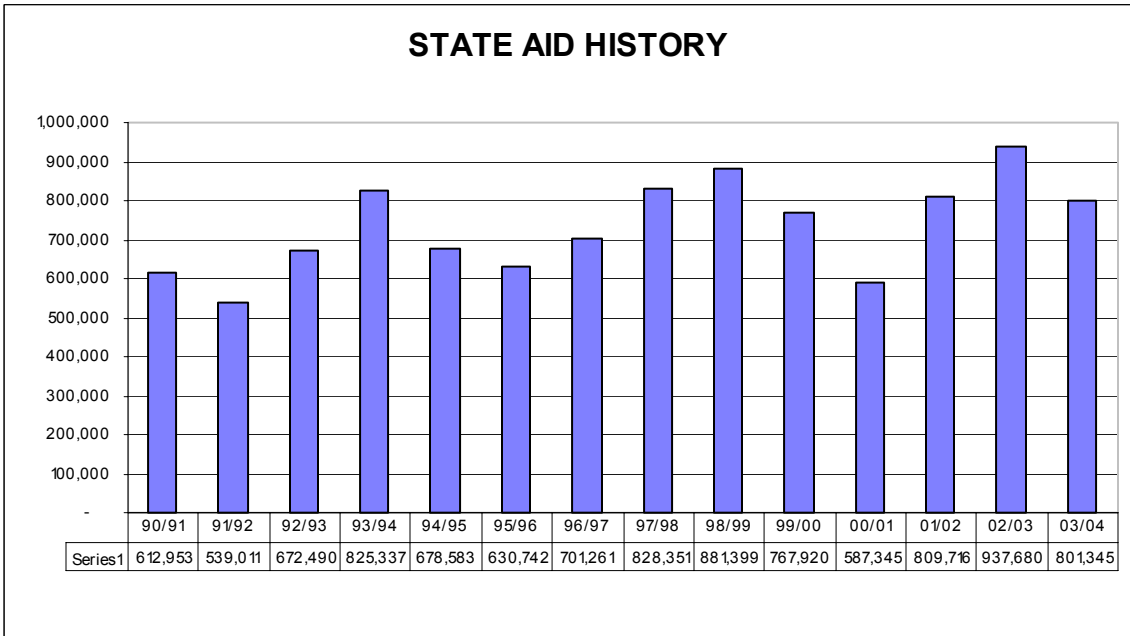
## TAX LEVIES

Total tax levy rates have primarily declined over the last few years. The total levy for the 2001-02 school year was the lowest total levy in the known history of the school district. This year, however, due to declining state revenues the state has reduced their support to the district creating a need for increased local levies.



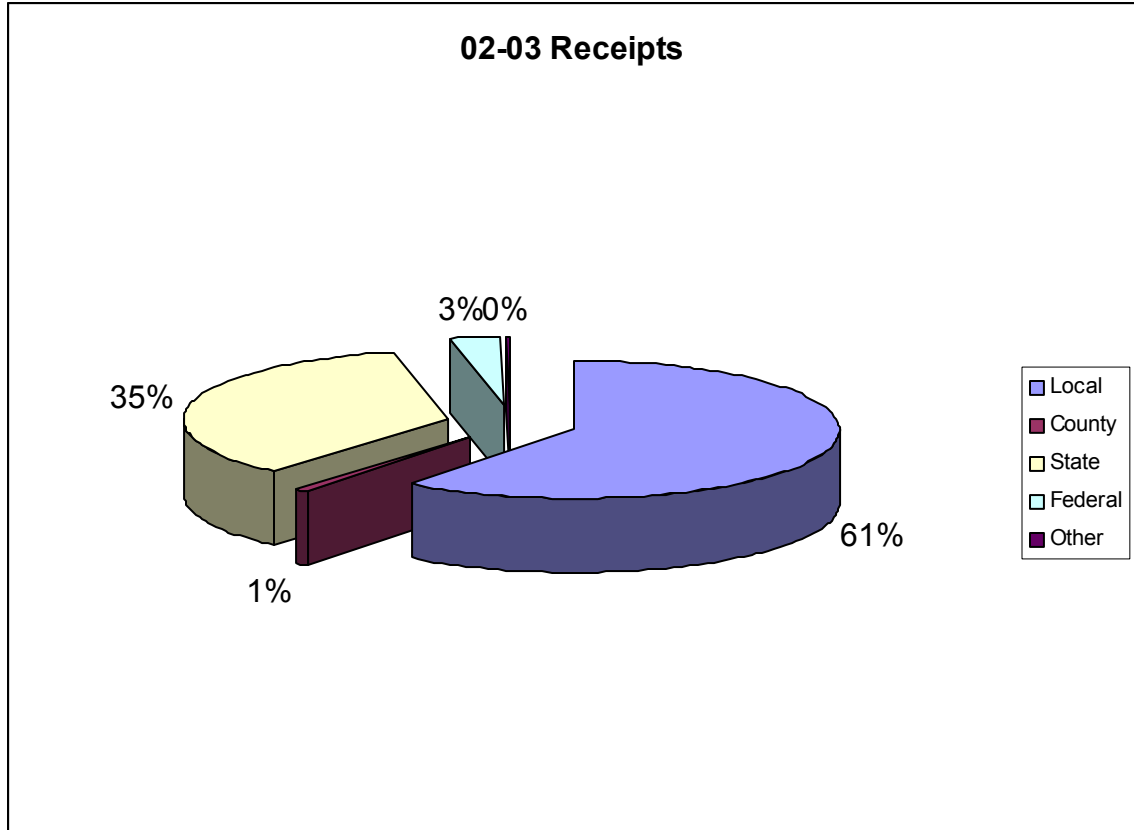
## STATE AID

State aid continues to be difficult to predict. The graph and chart below display state aid over the last fourteen years.

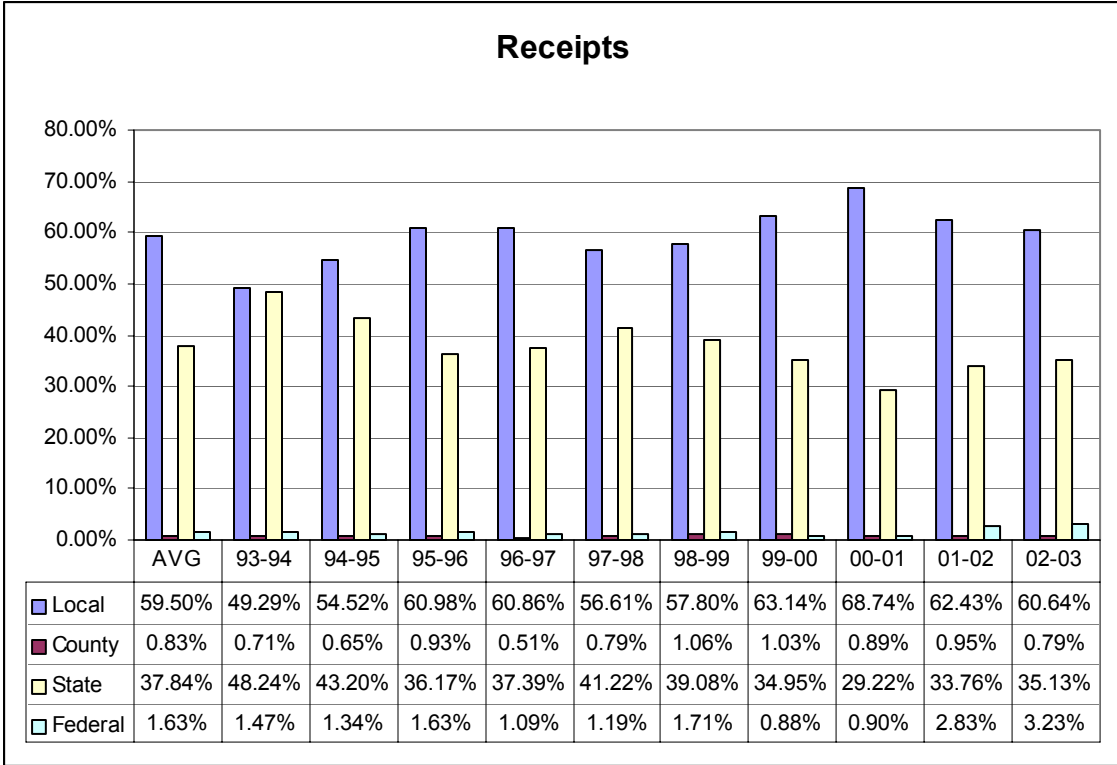


# SCHOOL DISTRICT RECEIPTS

	Local	County	State	Federal	Other	Total
02-03	2,101,615	27,302	1,217,279	111,919	7,332	3,465,447

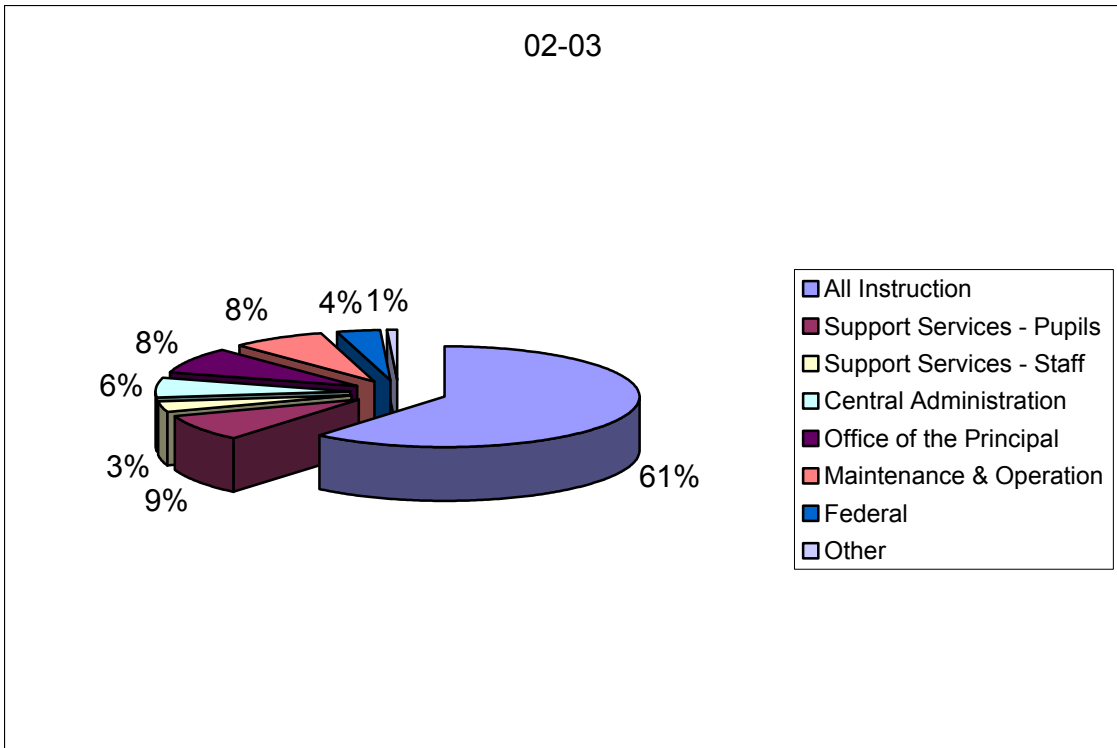




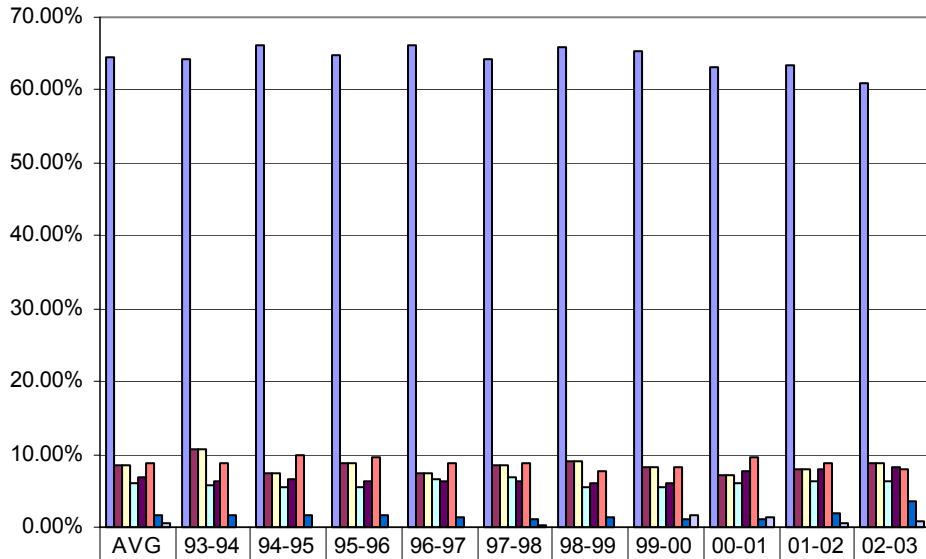


### SCHOOL DISTRICT EXPENDITURES

	All Instruction	Support Services - Pupils	Support Services - Staff	Central Administration	Office of the Principal	Maintenance & Operation	Federal	Other
02-03	1,982,257	281,287	108,102	208,375	265,894	260,965	115,439	24,757



## Expenditures



■ All Instruction	64.49%	64.35%	66.03%	64.91%	66.26%	64.34%	65.96%	65.22%	63.22%	63.54%	61.05%
■ Support Services - Pupils	8.40%	10.81%	7.38%	8.70%	7.43%	8.46%	9.12%	8.35%	7.13%	7.98%	8.66%
■ Support Services - Staff	8.40%	10.81%	7.38%	8.70%	7.43%	8.46%	9.12%	8.35%	7.13%	7.98%	8.66%
■ Central Administration	6.04%	5.87%	5.62%	5.57%	6.59%	6.95%	5.46%	5.61%	6.10%	6.22%	6.42%
■ Office of the Principal	6.78%	6.24%	6.67%	6.30%	6.23%	6.37%	6.05%	6.01%	7.71%	8.00%	8.19%
■ Maintenance & Operation	8.80%	8.67%	9.79%	9.73%	8.83%	8.76%	7.71%	8.13%	9.62%	8.67%	8.04%
■ Federal	1.65%	1.59%	1.73%	1.70%	1.37%	1.13%	1.43%	1.04%	1.06%	1.88%	3.56%
■ Other	0.48%	0.00%	0.00%	0.00%	0.00%	0.26%	0.04%	1.61%	1.48%	0.64%	0.76%

## School Improvement

District OR-1 first committed to the School Improvement Process (SIP) in the fall of 1993. At that time, a significant number of interested persons from the community, staff, and board of education began the process by developing a mission statement for the district. The mission statement and belief statements that were developed are as follows:

“Together, we prepare our students to successfully meet the challenges of the future”

District OR-1 will:

- Model and reinforce a sense of self-respect and respect for others.
- Provide equal opportunity for each student to develop his/her potential.
- Seek to develop a sense of individual responsibility and integrity.
- Seek and integrate educationally sound innovations into the curriculum.
- Provide a safe learning environment.

In the years that followed, a number of objectives were identified and the resources of the district were brought to bear on those challenges. Early areas of concern tended to spotlight the shortcomings associated with facilities and learning tools. With the completion of the building additions and renovations in 1998, efforts to improve curricular areas to meet the needs of all students became the focal point.

The process is now in the first year of a third five-year cycle. The following individuals have been appointed by the board of education to provide the leadership necessary for this endeavor. The steering committee members are:

David Bottrell	Co-Chairman
Steve Robb	Co-Chairman
Ken Malone	Secondary Staff
Jean Cheney	Elementary Staff
Britanny Lang	Student
Erik White	Student
Jill Weatherly	Special Education
Todd Calfee	Parent
Jaimi Calfee	Parent
Jo Pflanz	Board of Education
Clyde Childers	Ex-officio Member

In addition, the committee is assisted by Margaret McInteer and Mitzi Hoback of ESU #4 as the process continues.

To date, the steering committee has reaffirmed the mission statement and belief statements created by the original committee. The committee is in the process of gathering and analyzing data related to student learning. A data driven selection of a goal for improvement of student learning will soon be identified and that an action plan for addressing that goal will be developed during the 2003-04 school year. As the process continues, the steering committee will be soliciting the help and involvement in the process from additional members of the school community.