

# The Bennet Elementary Express

Volume 1 No. 19

www.districtor1.org

January 15, 2010



## Character Counts Corner

### Dr. King: An Authentic Hero

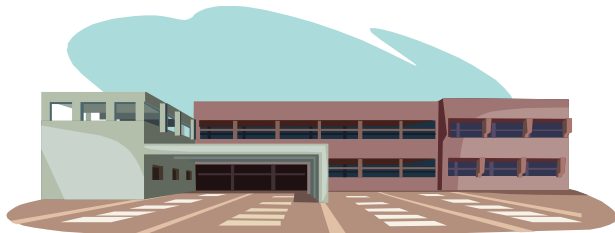
The dictionary defines a hero as “a person noted for feats of courage or nobility of purpose, especially one who has risked or sacrificed his or her life.” On a personal level, a hero is someone we hold in especially high esteem. For me, Martin Luther King, Jr. is both a national and personal hero.

Read his speeches and weigh them in the context of his times. Study his actions and his ability to resist enormous pressures from those who thought he was going too far as well as those who thought he wasn't going far enough. It's evident he was an extraordinary inspirational leader with uncommon vision and strength.

Dr. King didn't simply talk about his dreams; he went to the battle lines time and time again to fight for them, and what he did made a difference. He devoted his too short life to bring us closer to a more compassionate and just world where, in his words, people would be judged not by the color of their skin but by the content of their character. He was murdered before he reached the age of 40 in the midst of that fight.

Like many authentic heroes, Dr. King had personal flaws, but his courageous pursuit of the noble purpose of civil justice, even at the ultimate cost of his life, is worthy of appreciation, admiration, and a special day of commemoration.

This is Michael Josephson reminding you that character counts.



## School and Community Events

### No School January 18th! Staff In-service Day!

There will be no school on Monday, January 18th, 2010, which is Martin Luther King Day. This will also be a teacher in-service day for staff members at both schools. Please make sure that you have day care arrangements made for that day.

## Report Cards Were Sent Home Wednesday!

This is just a reminder that report cards were sent home with students on Wednesday, January 13th. If you haven't seen your child's report card, you might want to quiz them about it. If it is not with your student, please give the school a call we will gladly send another one home to you.

## Parent Access to Power Grade

Report Card time is a good time to remind parents of students in grades 4 – 6 that they have the power to check their student's grades on Power School, with Parent Access to Power Grade. You may log on daily to check your students current progress in each of their classes. You may also check on attendance and receive daily, weekly or monthly e-mail reminders about your child's progress. It only takes a moment to sign up. If you are interested, just contact Mr. Robb at school (782-3535) or e-mail [vrobb@esu6.org](mailto:vrobb@esu6.org).

## Haitian Earthquake Relief Drive Serves as Character Counts Caring Project

The tragic earthquake in Haiti has provided our students and staff with a very worthwhile Character Counts Caring Project. On Friday, we started a donation drive for the Haitian Earthquake Relief Fund. We are asking our students and families to make a donation to the drive by bringing in a small donation to place in the jar located in the cafeteria. All of the money donated will be sent to the Red Cross for use in their earthquake relief. Our goal is to raise \$500 by next Friday! We can do it with everyone's help!

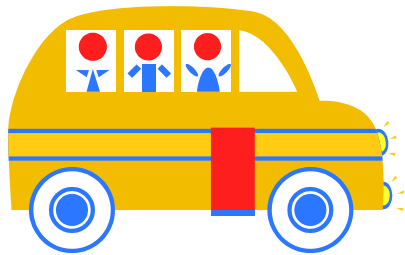
## Parking Issues! Snow puts parking space at Premium!

All of the snow this winter has created some space issues with parking during the beginning and end of the school day. **Our biggest concern is the preschool parking lot to the east of school. This lot is reserved for parents of preschool children only.** Many of the parents dropping off and picking up preschool students have infants and toddlers in the car with them. They need to park close to the preschool for this reason. If you are the parent of a Bennet Elementary student please park in the south parking lot or along Adams Street south of the school.

We are still having some problems with people parking in the circle drive. This is particularly troublesome and unsafe during bus loading and unloading times before and after school. Please do not drive in the circle drive when buses are parked there before and after school.

Another time we are having trouble with parked cars in the circle is at the 4:00 p.m. shuttle drop off when

shuttles return from the high school to drop off the students from high school and load up our Bennet late bus students. Many times people coming to school for errands or to pick up



students leave their car parked in the circle drive. This creates a big problem for the bus drivers. **ONCE AGAIN, A SIMPLE RULE OF THUMB IS, IF YOU ARE LEAVING YOUR CAR TO ENTER THE BUILDING, PARK IT IN THE SOUTH PARKING LOT.**

**Finally, with all of the snow piles limiting visibility and slick conditions around school, it is vital that everyone use extra caution when entering and exiting the parking areas and streets around school. We don't want to have any accidents.**

#### **Elementary Boosters Meet Start Planning for Fun Night**

The Elementary boosters will hold their next meeting Tuesday, January 19th at 7:00pm in the school library. Please plan on attending this meeting as we begin to plan Fun Night. It will be here before we know it, and we welcome your ideas.

#### **Early Head Start Program Now Available to Lancaster County Children**

The Lincoln Action Program is initiating an Early Head Start Program for children (newborn to age 3) in Lancaster County. This is a comprehensive child development program that serves low-income children, pregnant women and their families.

A flyer about the program is being sent home today. It contains eligibility requirements and contact information for families that may be interested. We also have application forms available at Bennet Elementary.

#### **Day Care Openings**

Vicki Thomson has daycare openings available in her home. Contact her at 499-7954



#### **Elementary Cheer Camp Set for January**

The High School Cheerleaders will sponsor a cheer camp for elementary students. The camp is scheduled for Saturday, January 23<sup>rd</sup>, from 9:00A.M. – 12:00P.M. Flyers with information and registration forms are

available in the office.

#### **What a Difference a Year Makes!**

In looking at last year's newsletter for this week, I noticed a picture of the new preschool playground equipment that had been installed. Take a look:



Yes, it was a snowless landscape last year at this time! Take a look below at the same playground!



Different scene altogether, isn't it. It is a snowy landscape out there, as you can see below.



This is the scene last Friday following the snow and strong winds that buffeted the area. I'm sure many of you have even bigger drifts in your yards. Yes, sir, what a difference a year makes! -Mr. Robb