

ANNUAL RULE 10 REPORT

OTOE COUNTY SCHOOL  
DISTRICT #501

PALMYRA-BENNET SCHOOL DISTRICT OR-1  
425 F STREET, BOX 130  
PALMYRA, NEBRASKA 68418  
(402) 780-5327

Prepared by:  
Robert L. Hanger  
Superintendent of Schools  
December 1, 2013

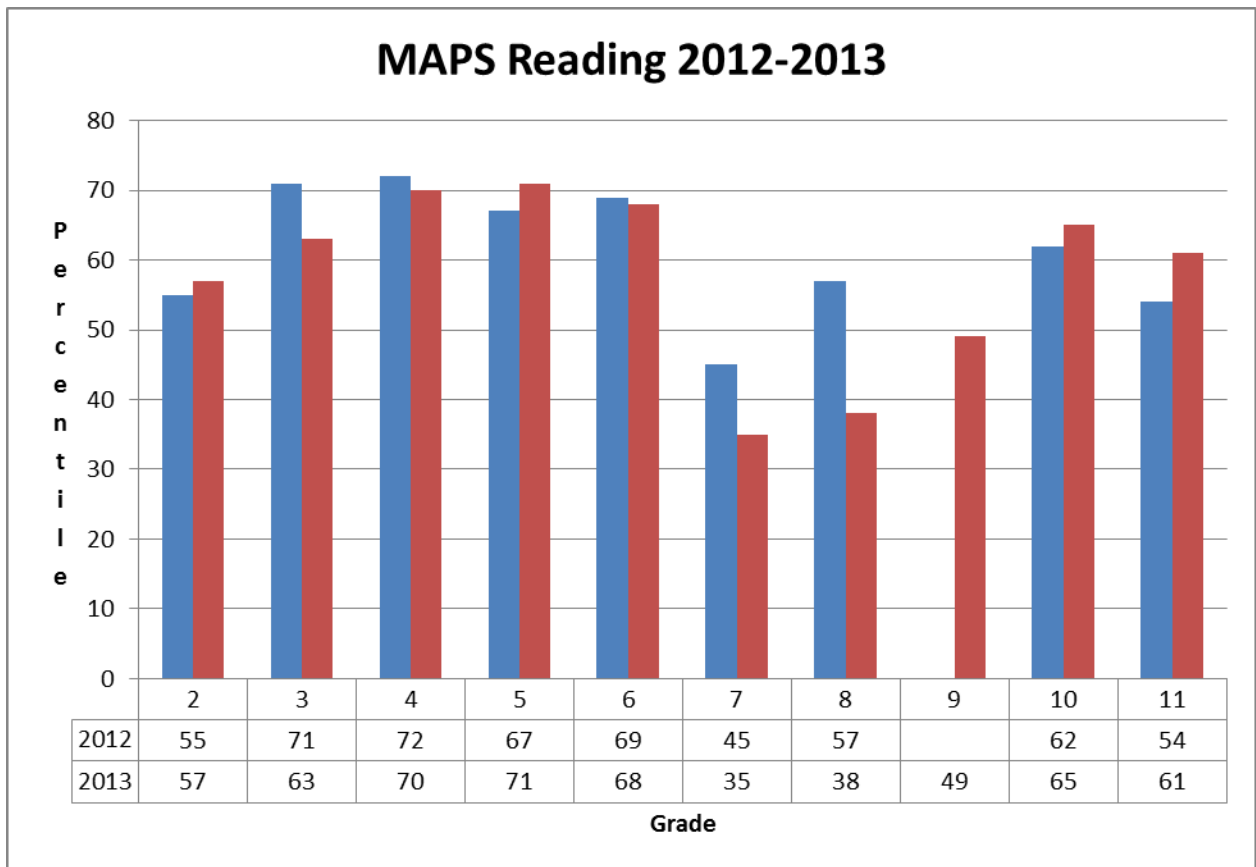
## INTRODUCTION

This report is required of school districts by the Nebraska State Department of Education in order for them to be in compliance with state accreditation standards. Each district in the state must report specific information to their patrons each year. Mandatory report topics are student progress, demographics, learning climate, and finance. The regulation also requires that the information be published and distributed to patrons. If you have any questions about these topics or others, please feel free to contact the school office.

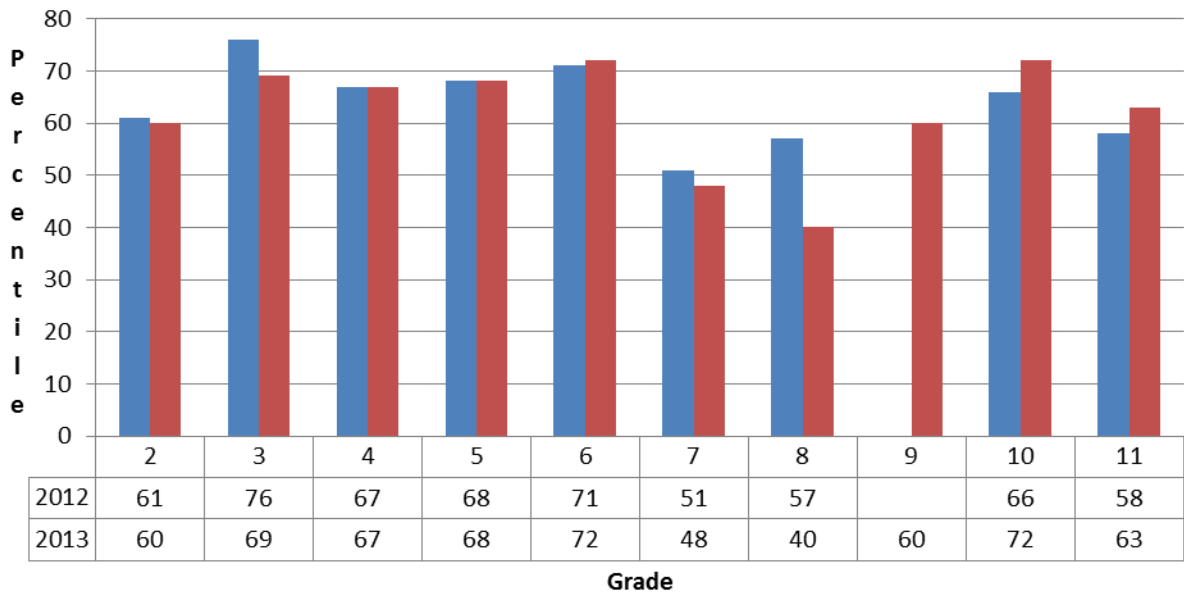
## STUDENT PERFORMANCE

Students in grades K, 1, 2, 3, 4, 5, 6, 7, 8 and 10 or 11 are tested each year with the nationally normed NWEA Assessment, Measures of Academic Progress (MAPS) to assess their academic progress. Each year, our students are tested in the areas of reading, math, language, science and concepts and processes in the fall and spring.

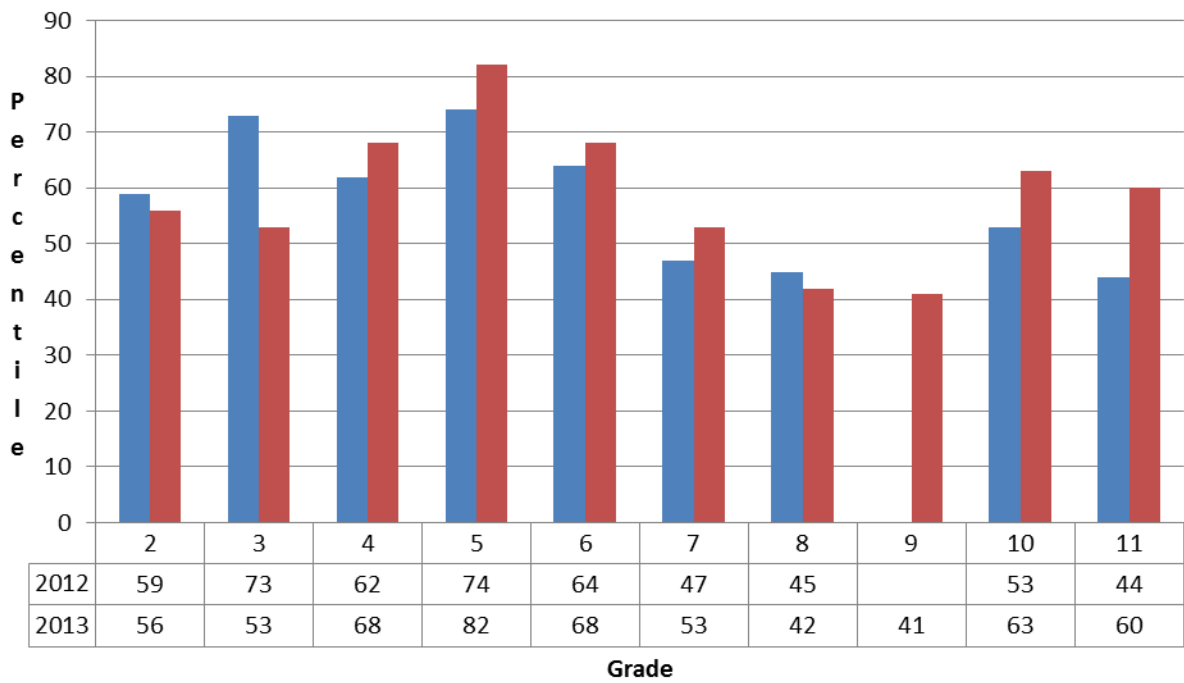
Test results are expressed in terms of percentile rank. For the 2012- 2013 school years the results are as follows:



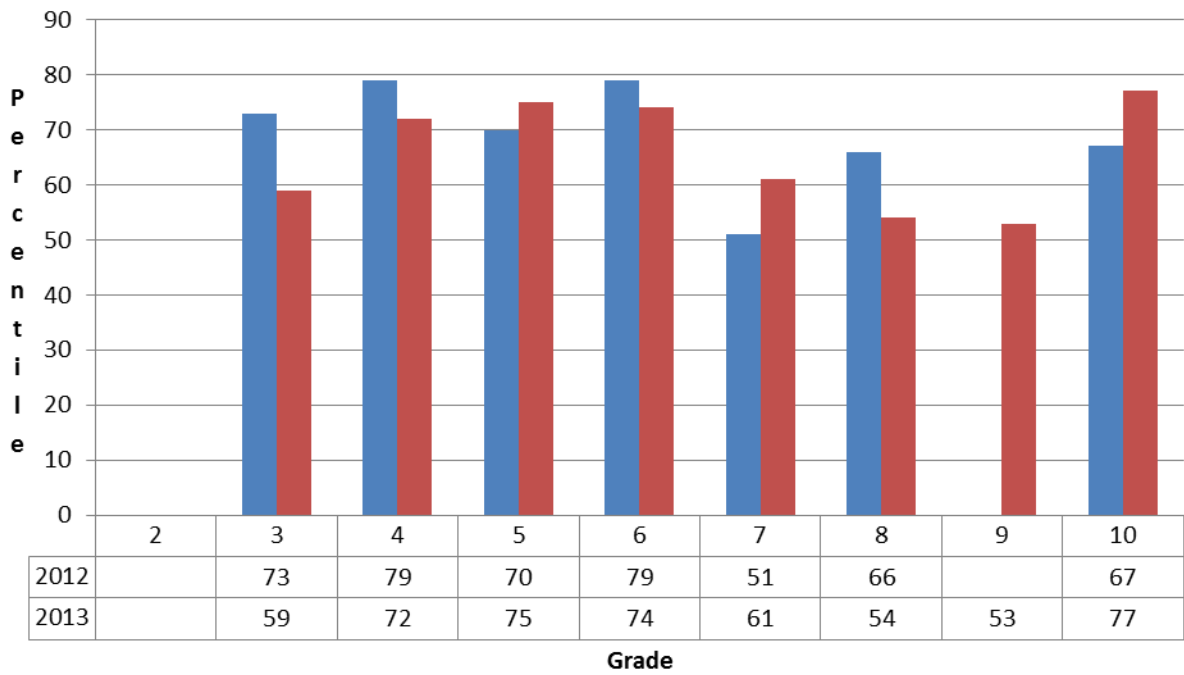
### MAPS Language Usage 2012-2013



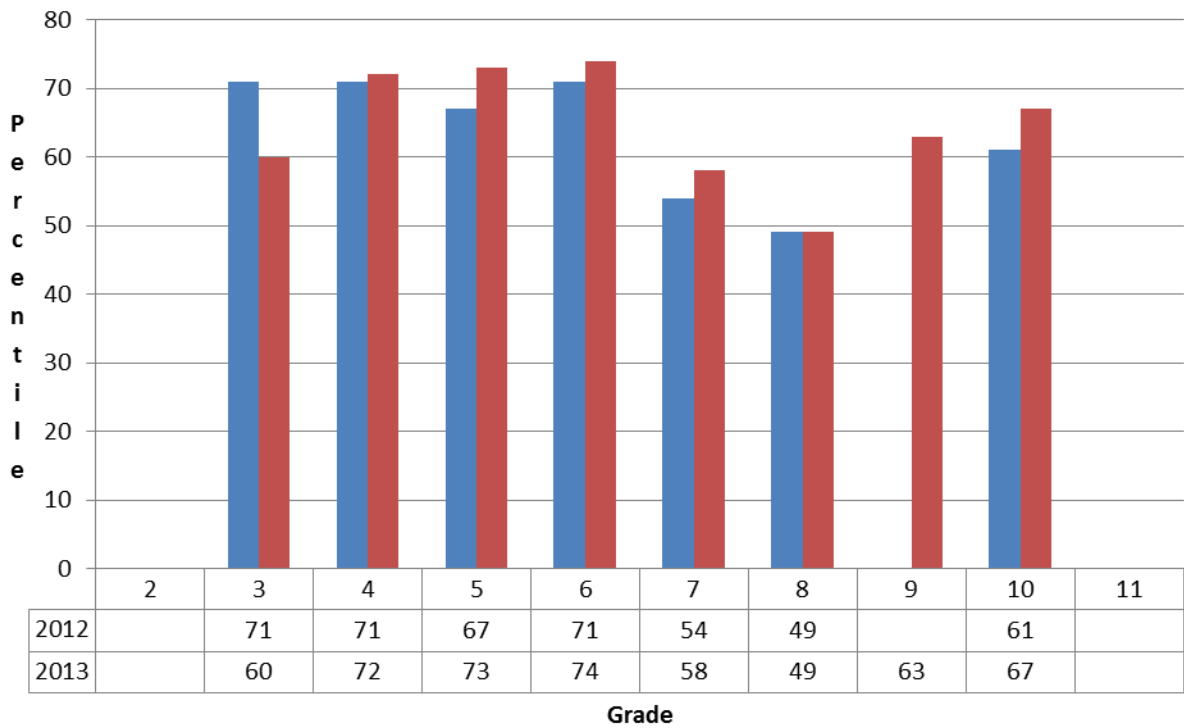
### MAPS Mathematics 2012-2013



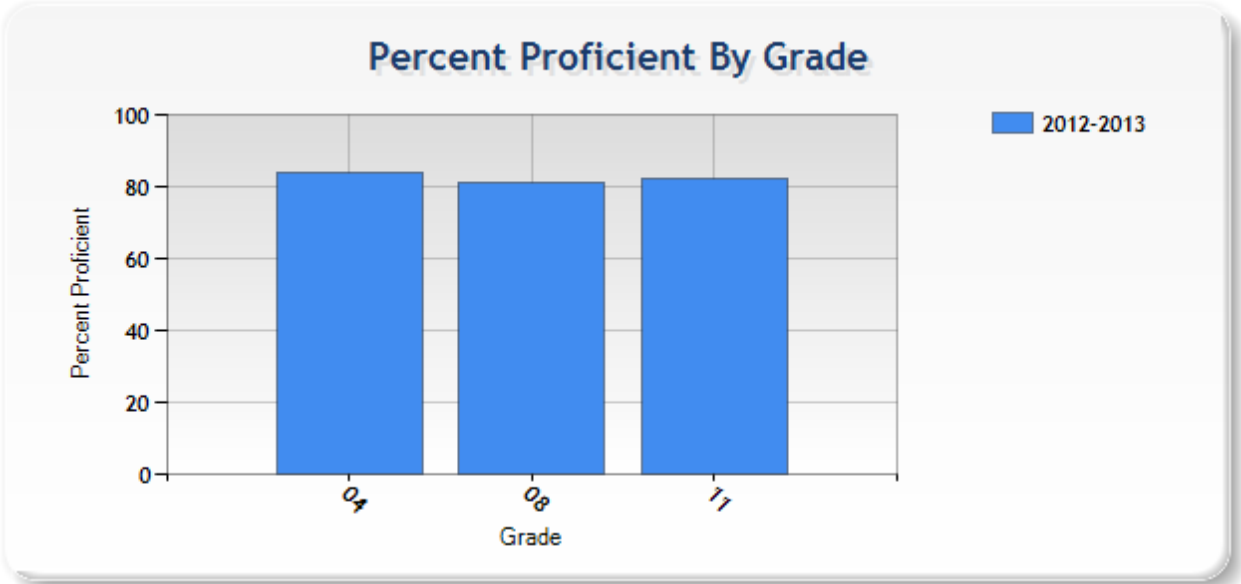
### MAPS General Science 2012-2013



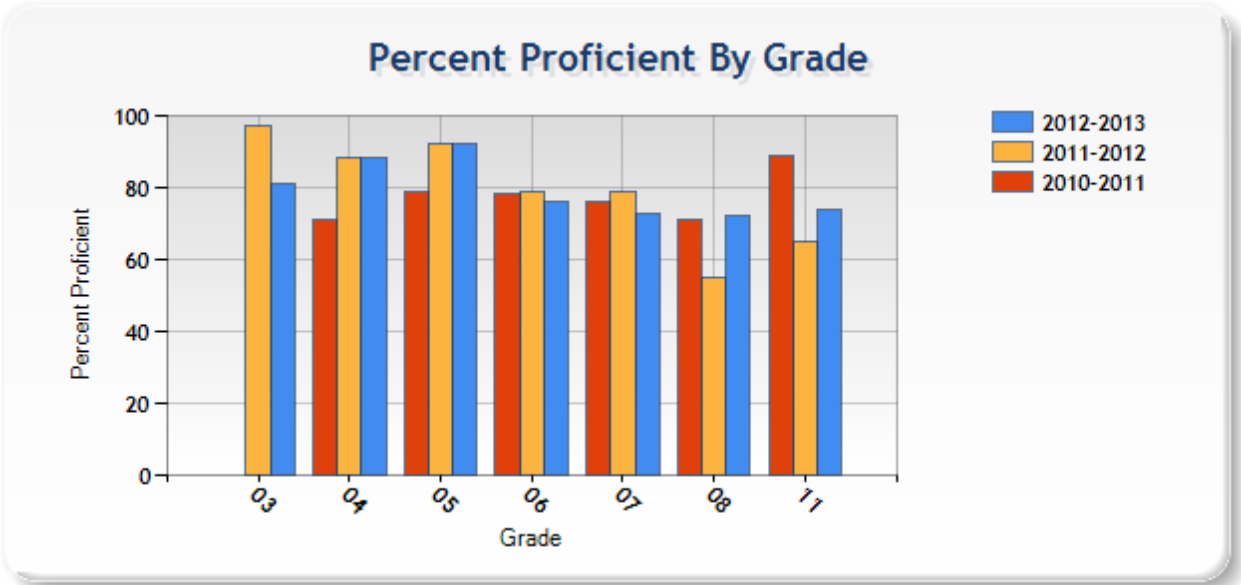
### MAPS Concepts and Processes 2012-2013



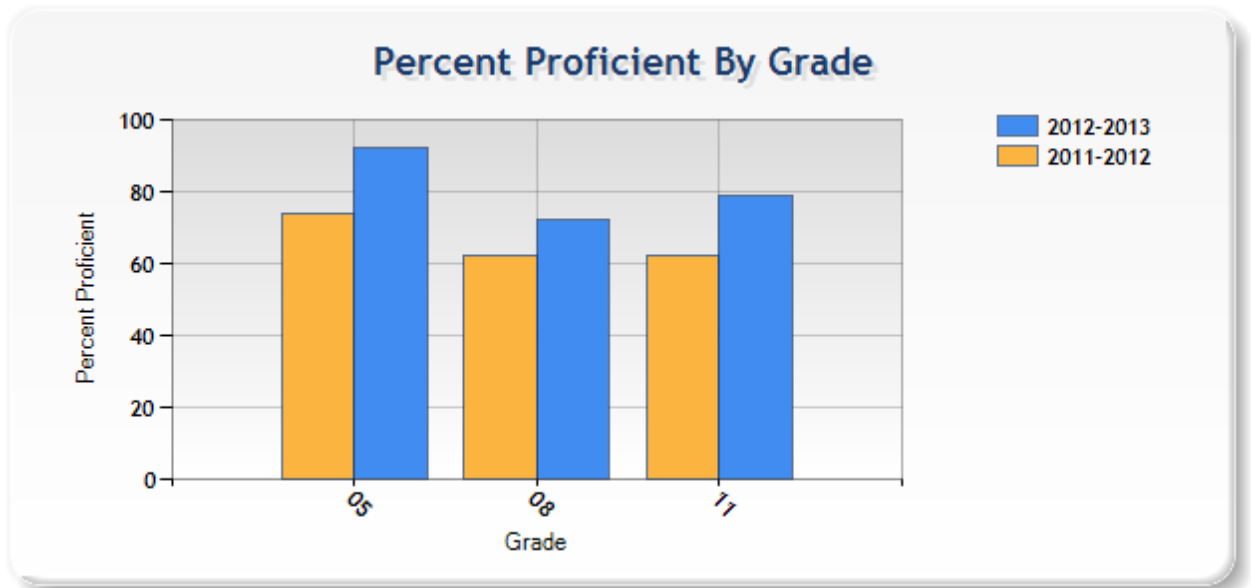
# Nebraska State Accountability (NeSA) - Writing



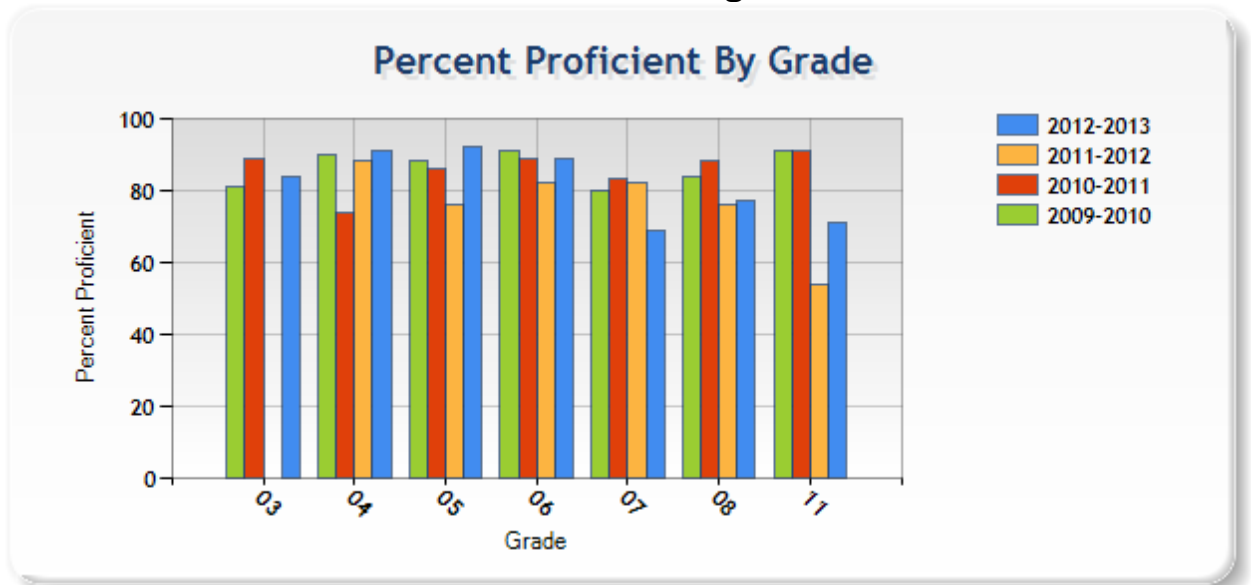
# Assessment of State Mathematics Standards



## Assessment of State Science Standards

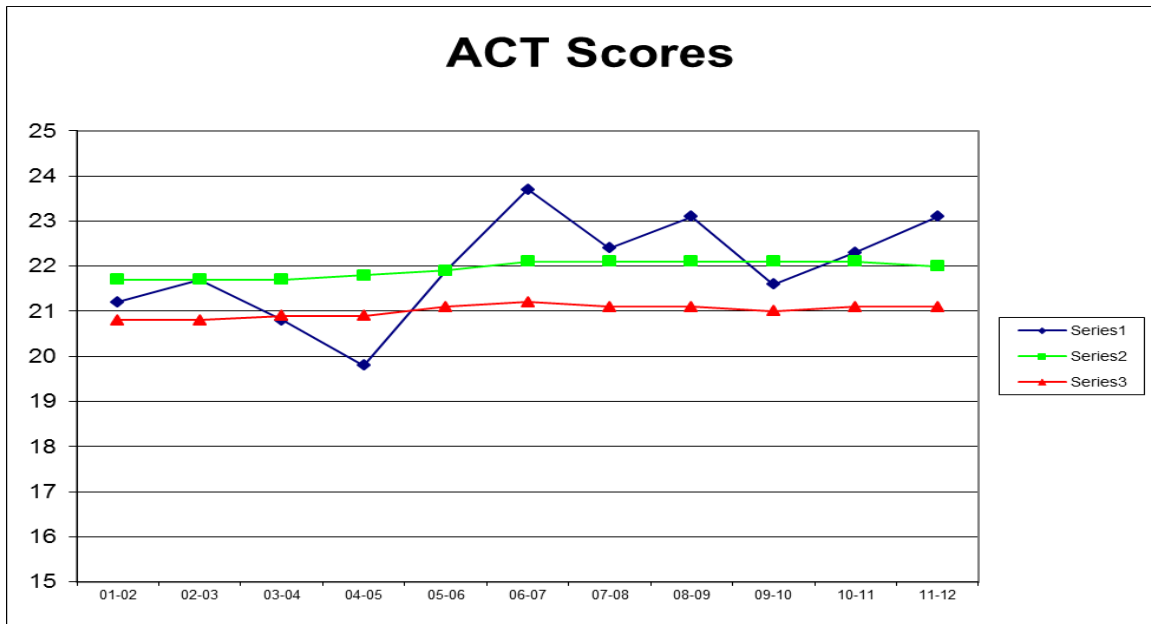


## Assessment of State Reading Standards



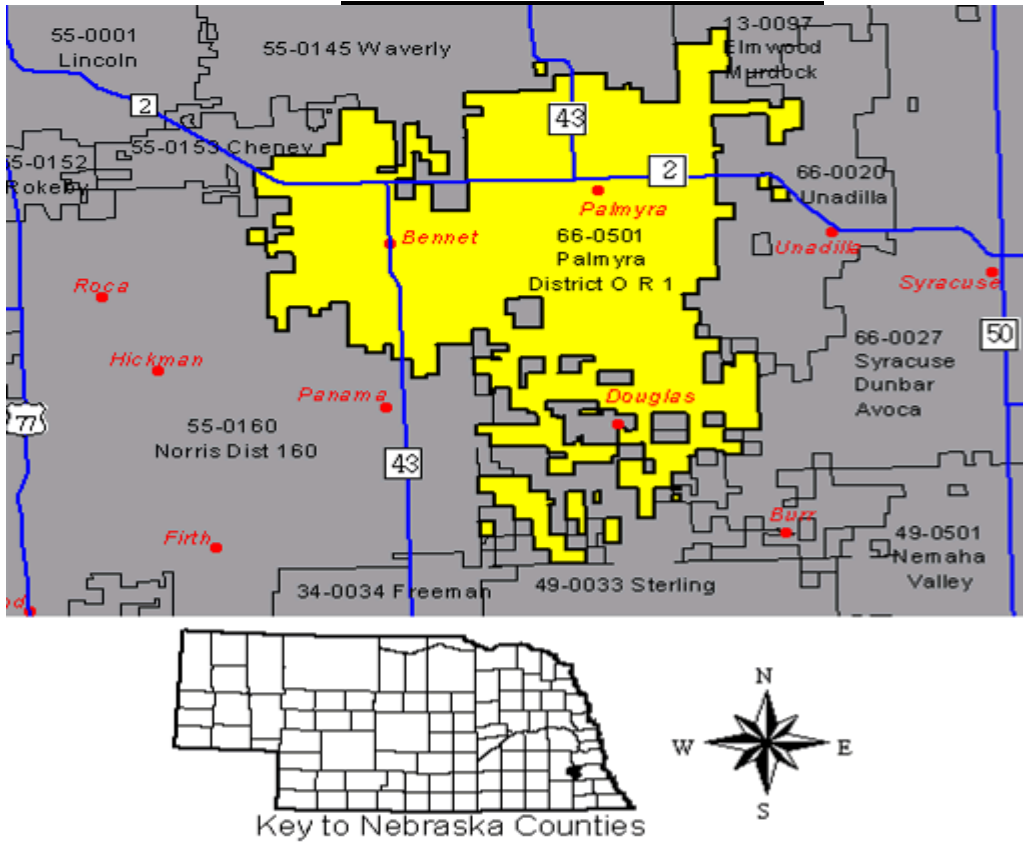
The American College Test (ACT) is a college entrance exam administered by the College Board. Since the ACT assessment is designed for those students who plan to attend college, the focus is on the students who completed the recommended college preparatory courses. However, these scores include those of students who took the ACT without having taken the recommended college preparatory courses. The four academic tests of the ACT measure abilities in English, Mathematics, Reading, and Science. The ACT test scores are reported on a scale that ranges from 1 to 36.

The following chart represents a 12-year history for District OR-1's ACT-tested students.

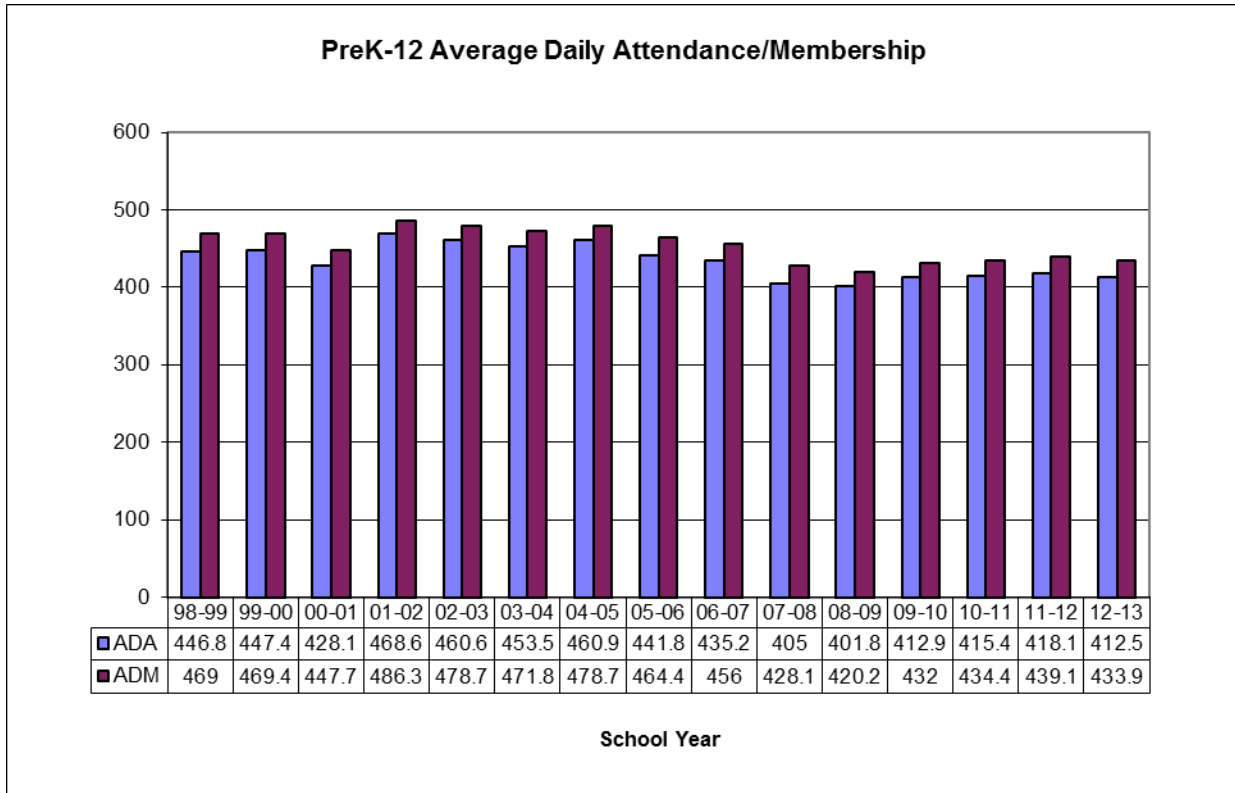


Years		Number of Students Tested	English	Mathematics	Reading	Science
2012-2013	National	1,799,243	20.2	20.9	21.1	20.7
2012-2013	State	17,745	21.1	21.1	21.8	21.5
2012-2013	District	11	24.0	23.4	24.5	23.6

# SCHOOL DEMOGRAPHICS

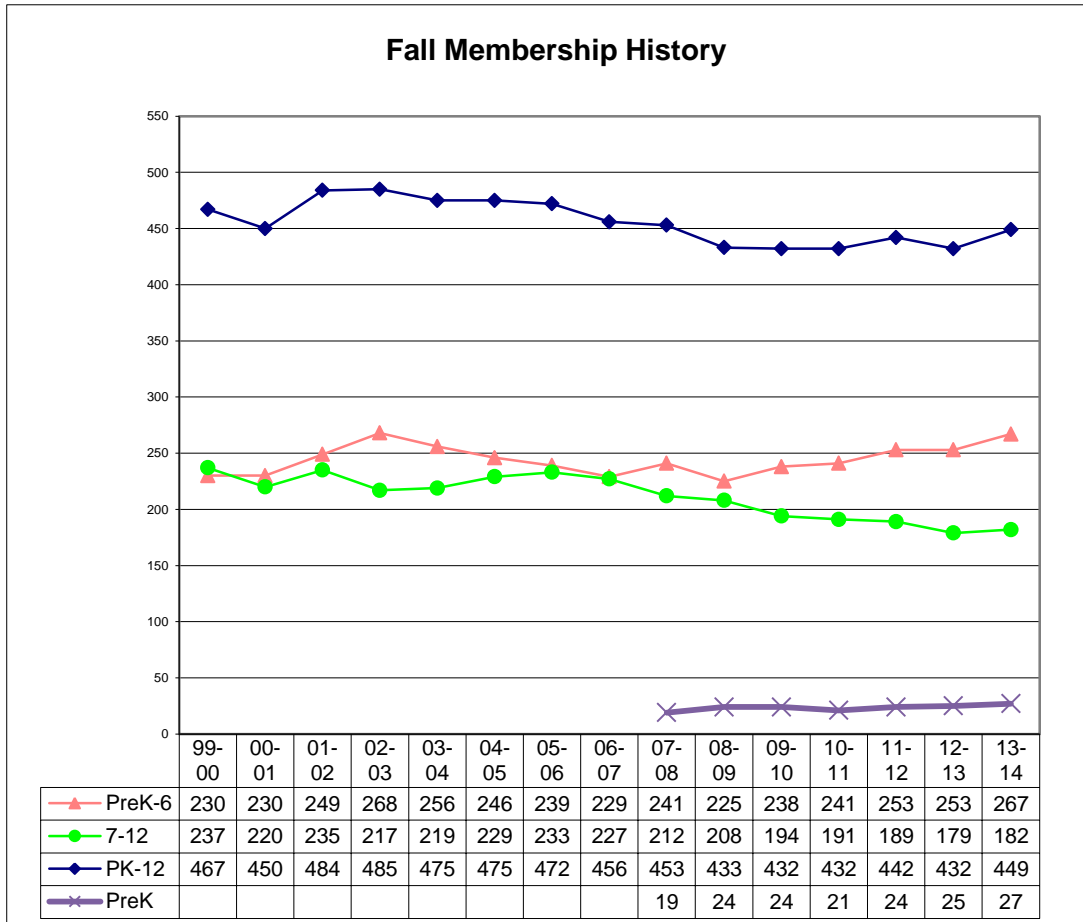


## Attendance Rate

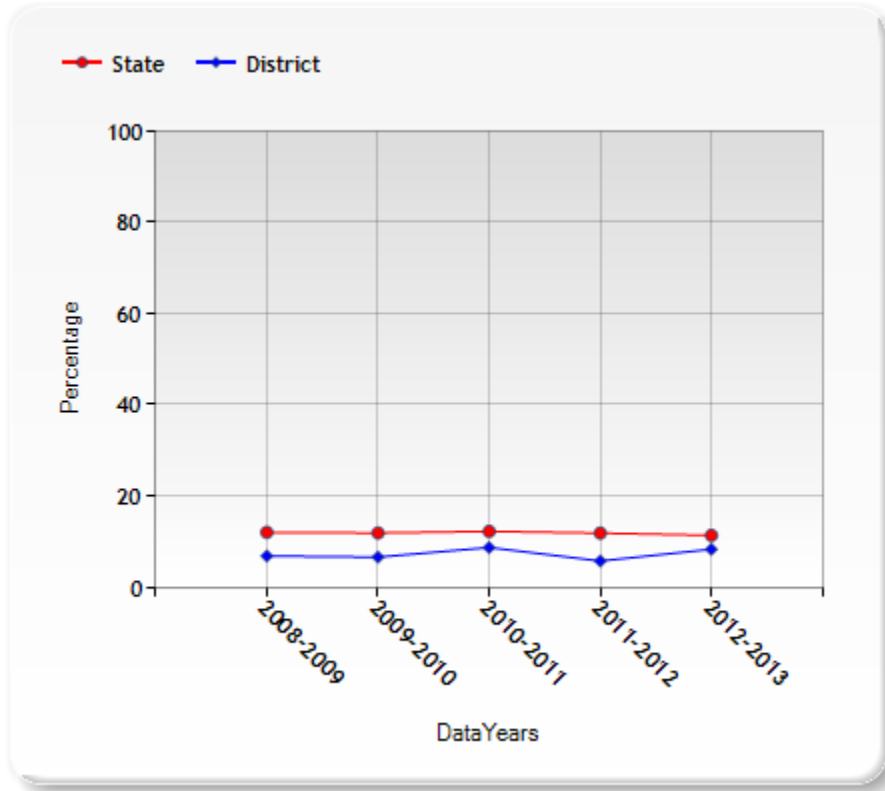




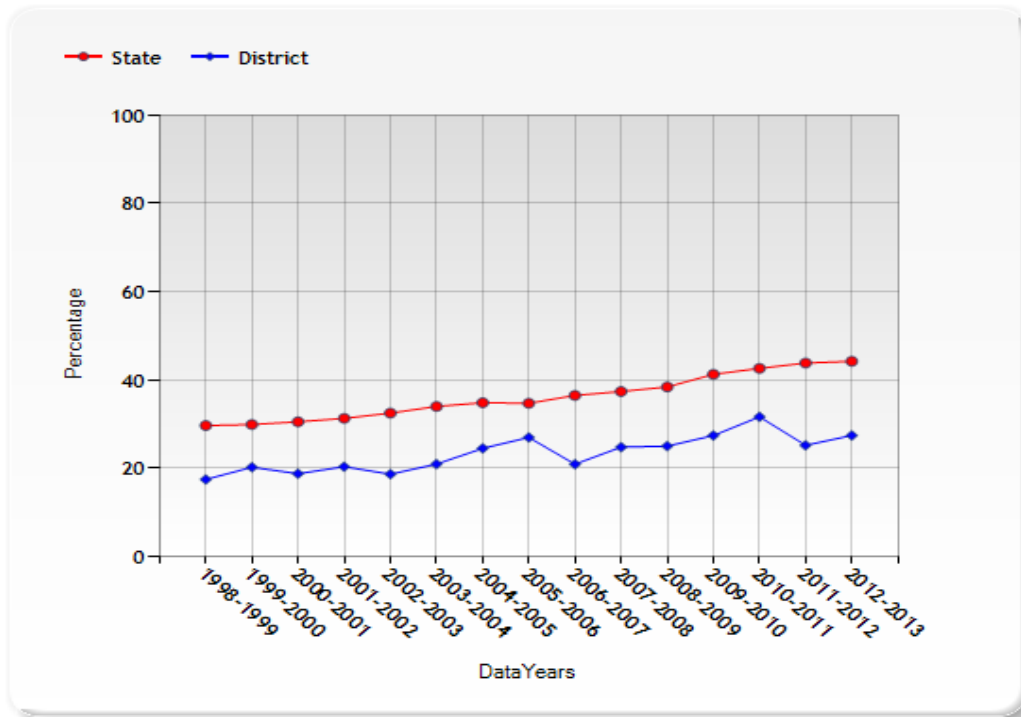
# ENROLLMENT--LAST FRIDAY IN SEPTEMBER



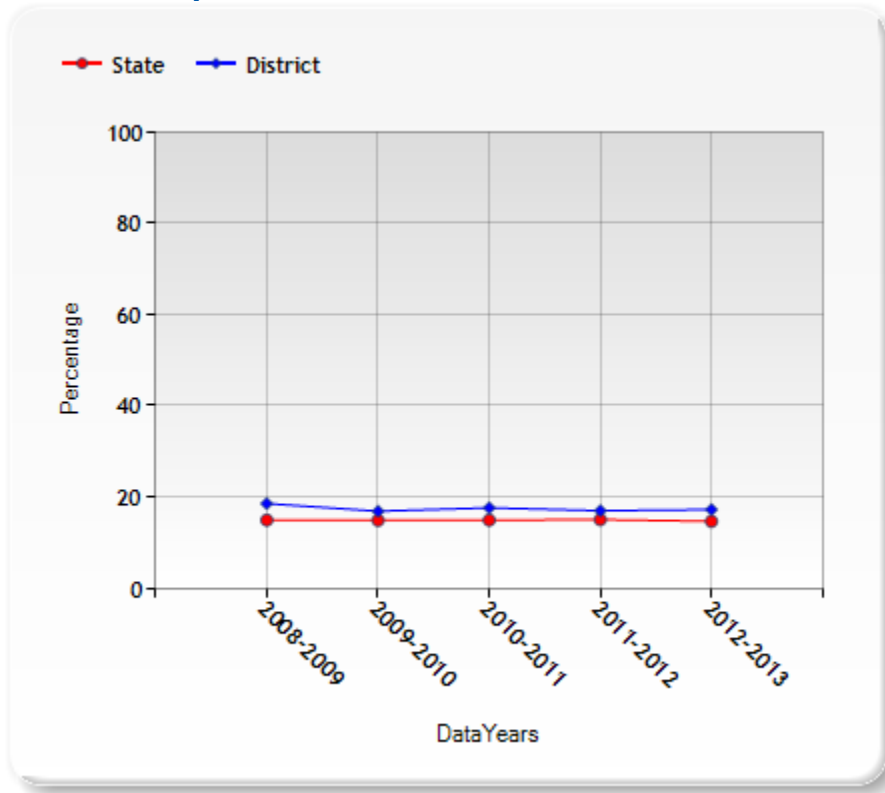
## School Mobility Rate



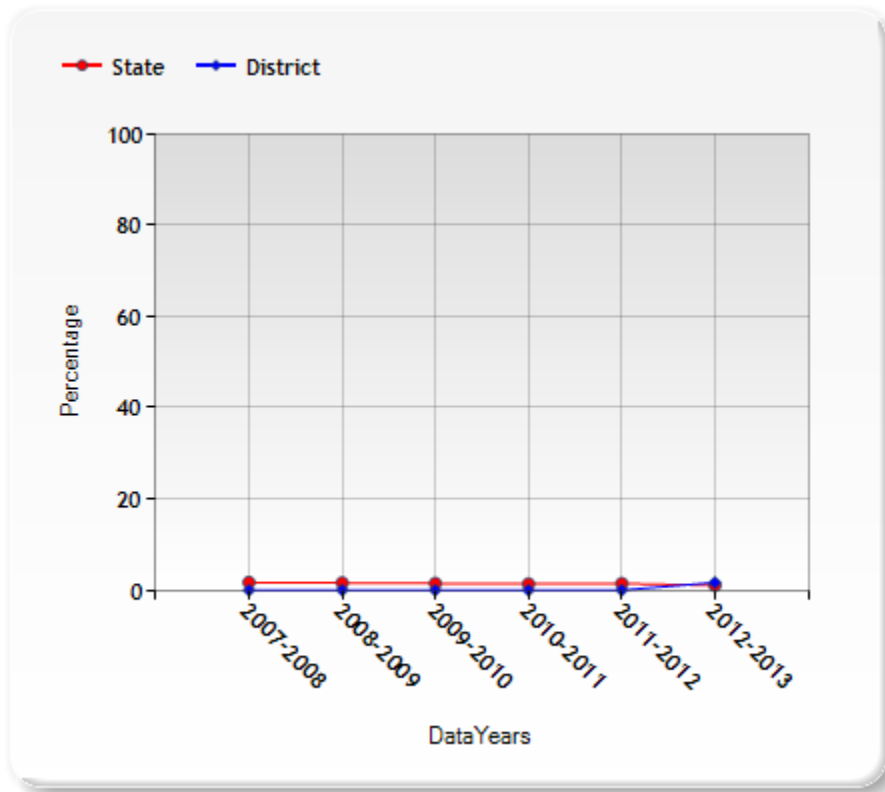
## Free/Reduced Priced Meals



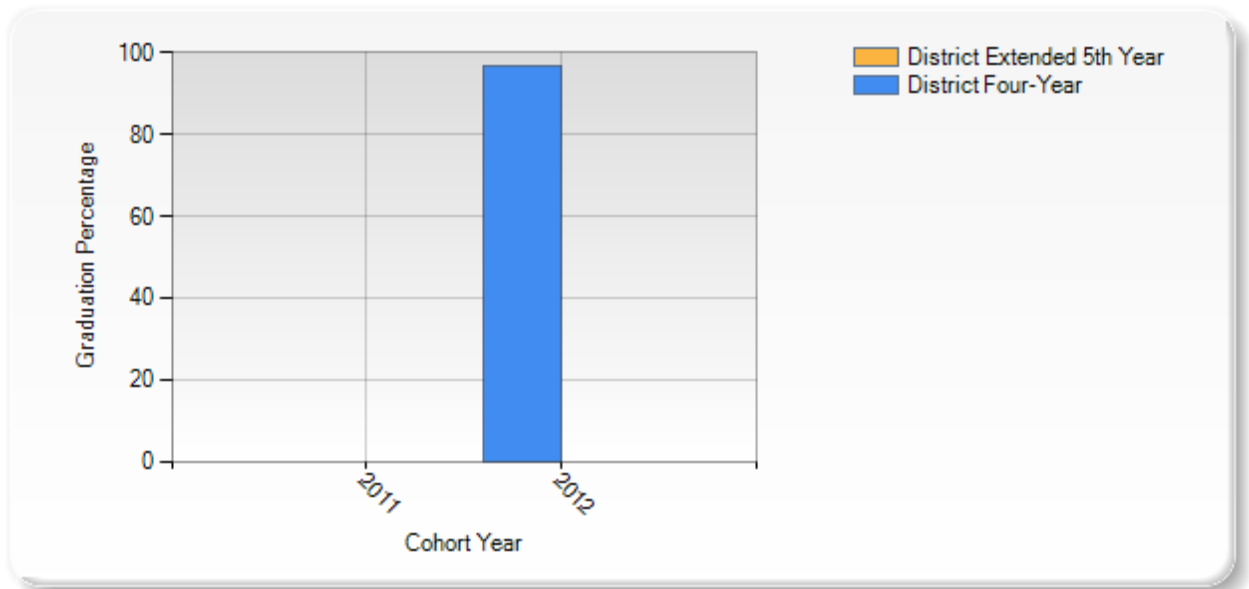
## Students in Special Education



## Dropout Rate - All Students

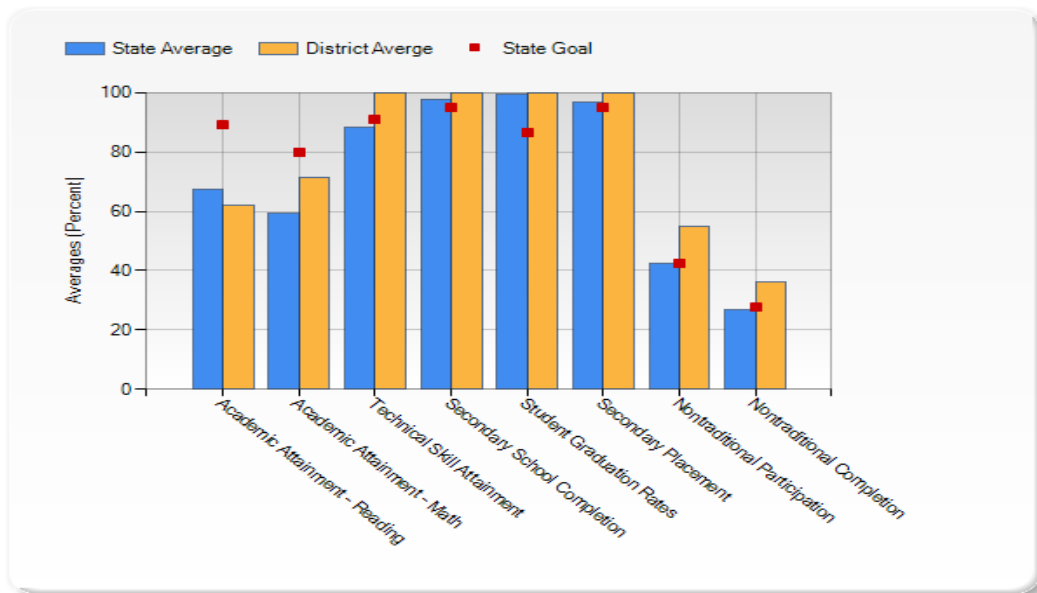


## Graduation Rate

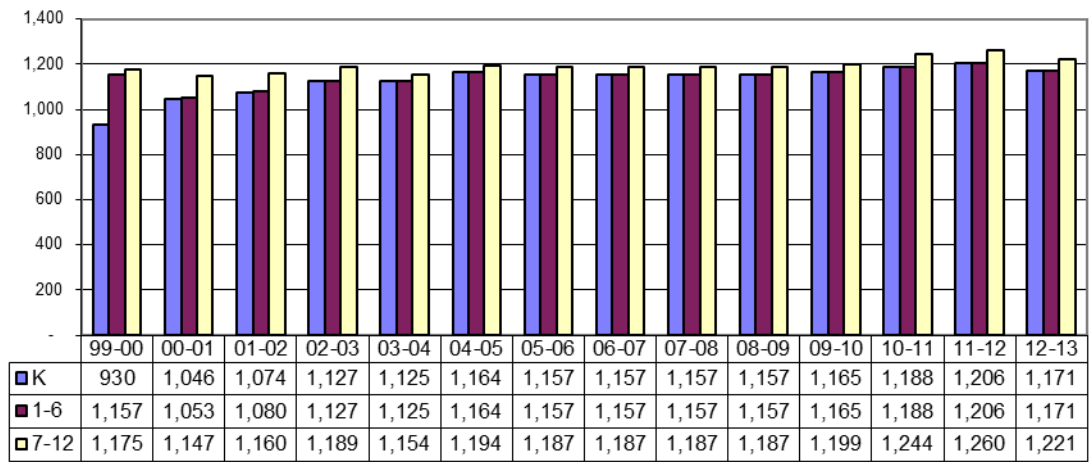


Years	State	District
2006-2007	88.46	100.0 - *
2007-2008	89.06	96.30
2008-2009	89.04	100.0 - *
2009-2010	89.21	100.0 - *

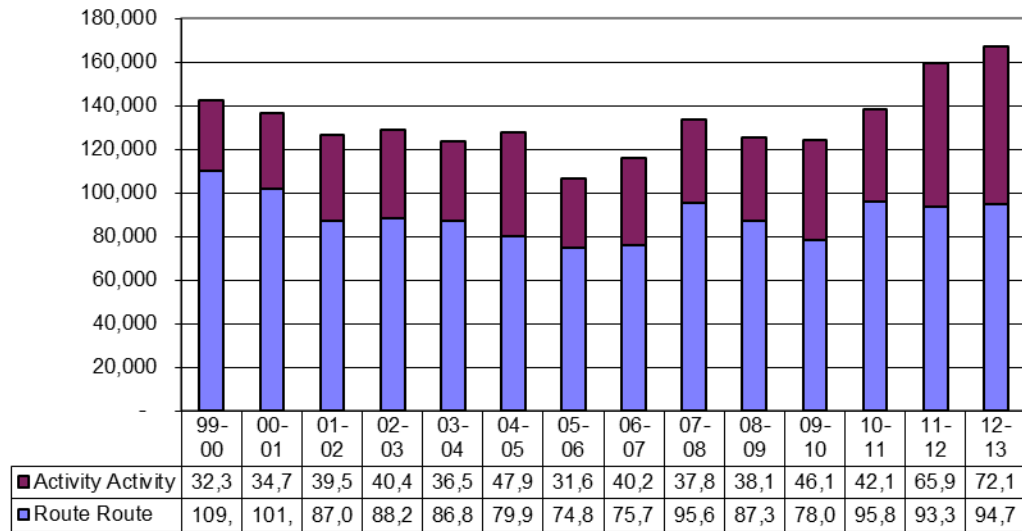
## Career Education Performance



### INSTRUCTIONAL HOURS

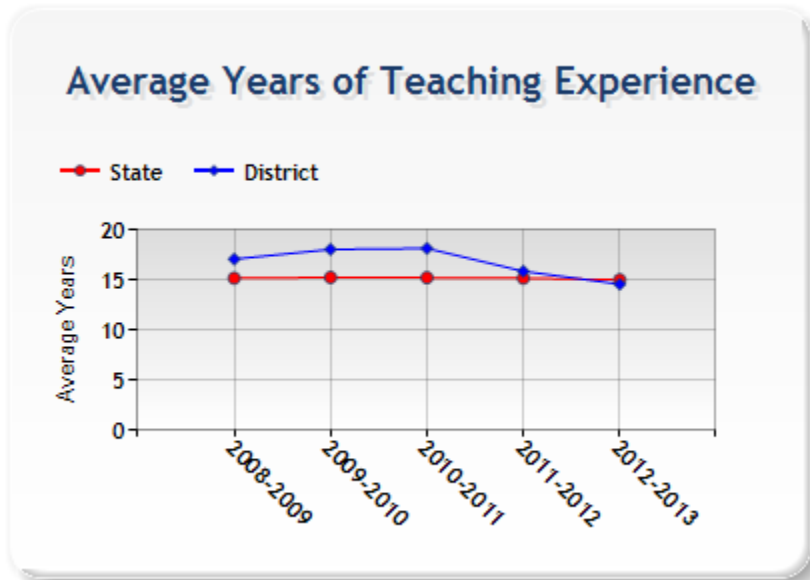
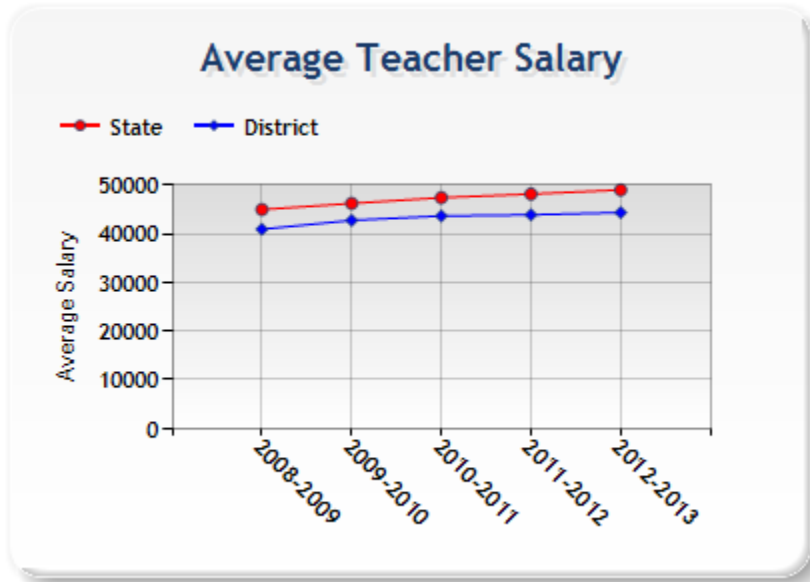


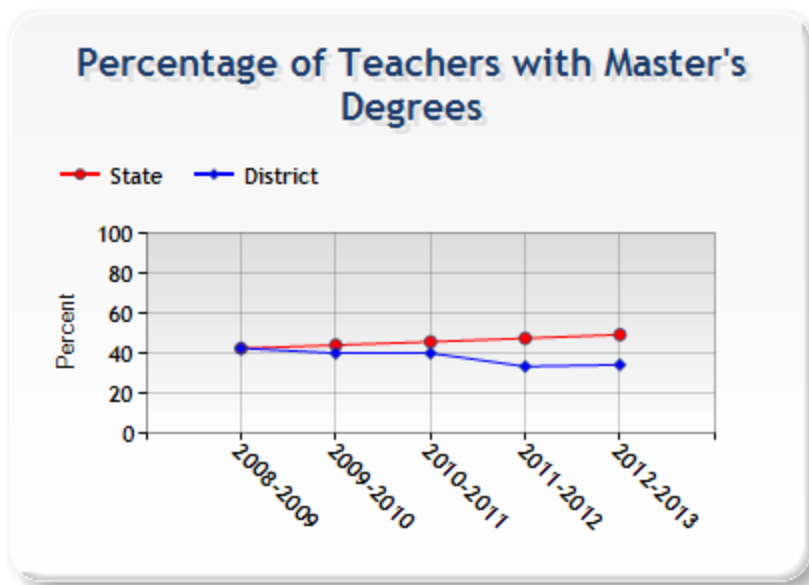
### Transportation Summary



## STAFF

During the 2012-13 school year, District OR-1 Public Schools was served by a Superintendent, two Principals, an Activities Director, and a professional teaching staff of forty-three.





State accreditation requirements specify that at least 80 percent of instructional units provided in the secondary grades must be assigned to teachers who hold certificates displaying appropriate endorsements. Endorsements mean the teachers majored in the subjects they teach.

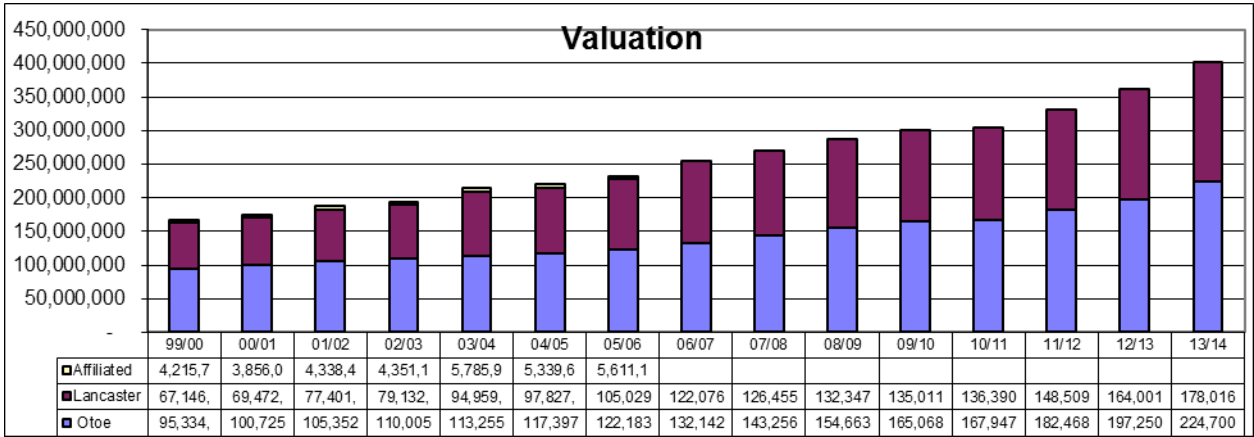
The Chart below shows the percentage of High School Teachers endorsed in the subject area they teach for the 2012-2013 school year.

NCLB Content Areas	2010-2012 Number of Courses	2010-2012 Percent NCLB Qualified	2012-2013 Number of Courses	2012-2013 Percent NCLB Qualified
CIVICS AND GOVERNMENT	2	100.00 %	4	100.00 %
ELEMENTARY	14	100.00 %	14	100.00 %
ENGLISH LANGUAGE ARTS	22	100.00 %	24	100.00 %
FOREIGN LANGUAGES	22	100.00 %	14	100.00 %
HISTORY AND GEOGRAPHY	10	100.00 %	20	100.00 %
MATHEMATICS	18	100.00 %	26	100.00 %
NATURAL SCIENCES	13	100.00 %	30	100.00 %
VISUAL AND PERFORMING ARTS	65	100.00 %	42	100.00 %
OVERALL COUNT/AVERAGE	166	100.00 %	174	100.00 %

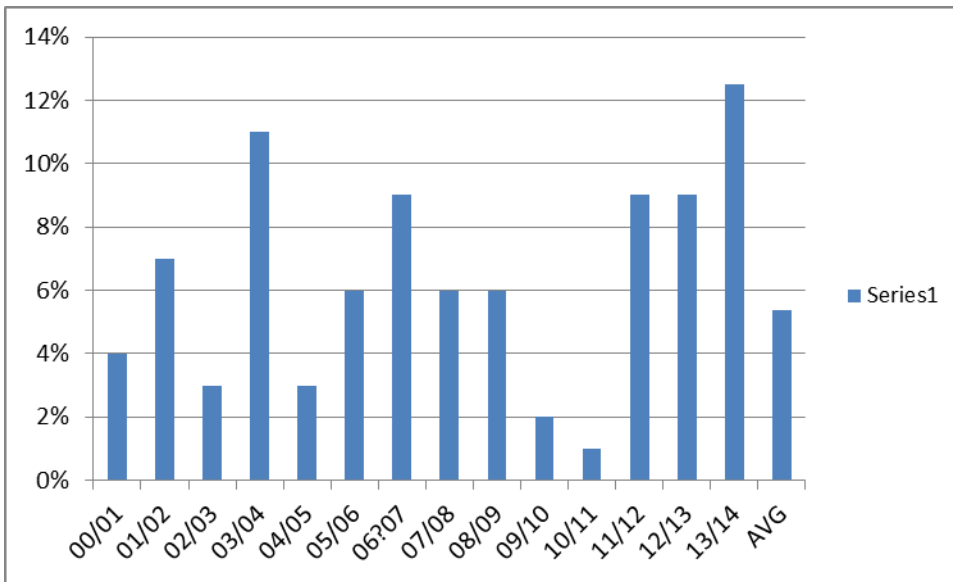
## FINANCIAL DATA

### DISTRICT VALUATION

District OR-1 property valuations have shown a significant increase over a period of time. The following graph and chart display those changes over a period of 15 years.



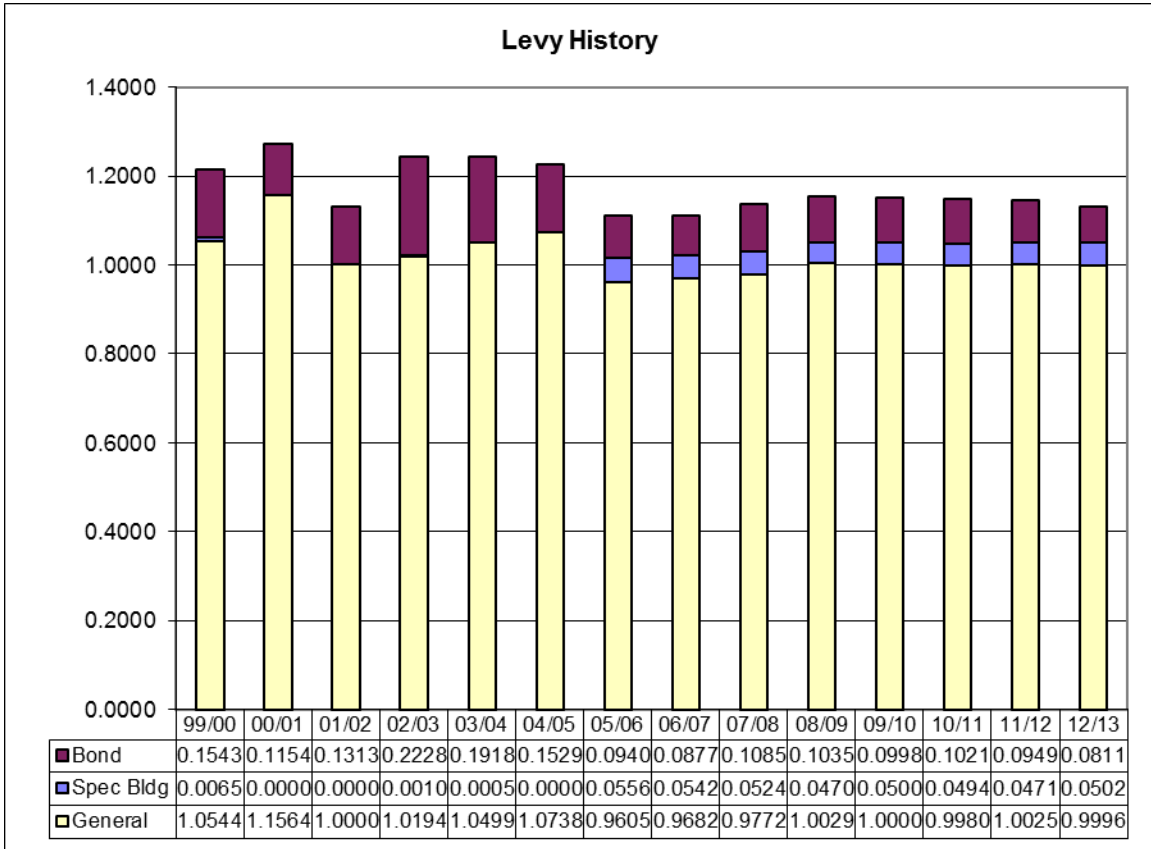
Despite the trend of increasing valuation, it remains difficult to predict annual growth in valuations as indicated on the following chart.





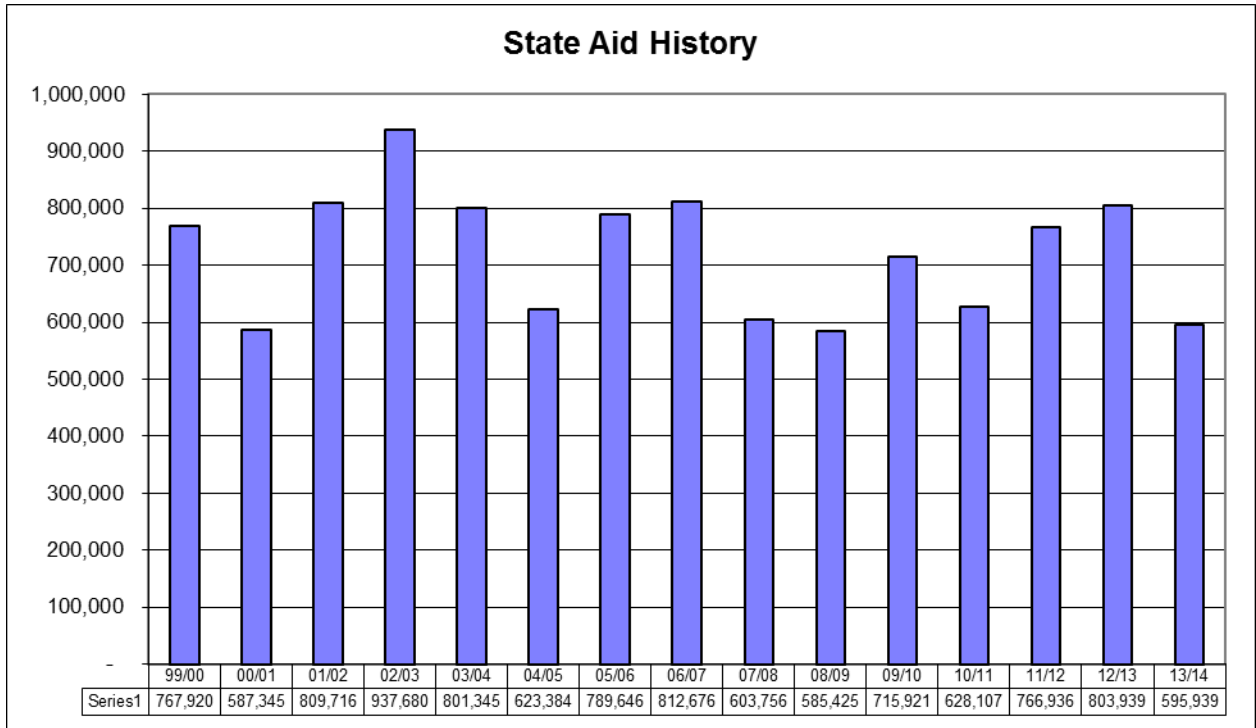
## TAX LEVIES

Total tax levy rates have primarily declined over the last few years. The total levy for the 2005-06 school year was the lowest total levy in the known history of the school district.



## STATE AID

State aid continues to be difficult to predict. The graph and chart below display state aid over the last 15 years. There is an inverse relationship between state aid and district resources based on the state funding formula.

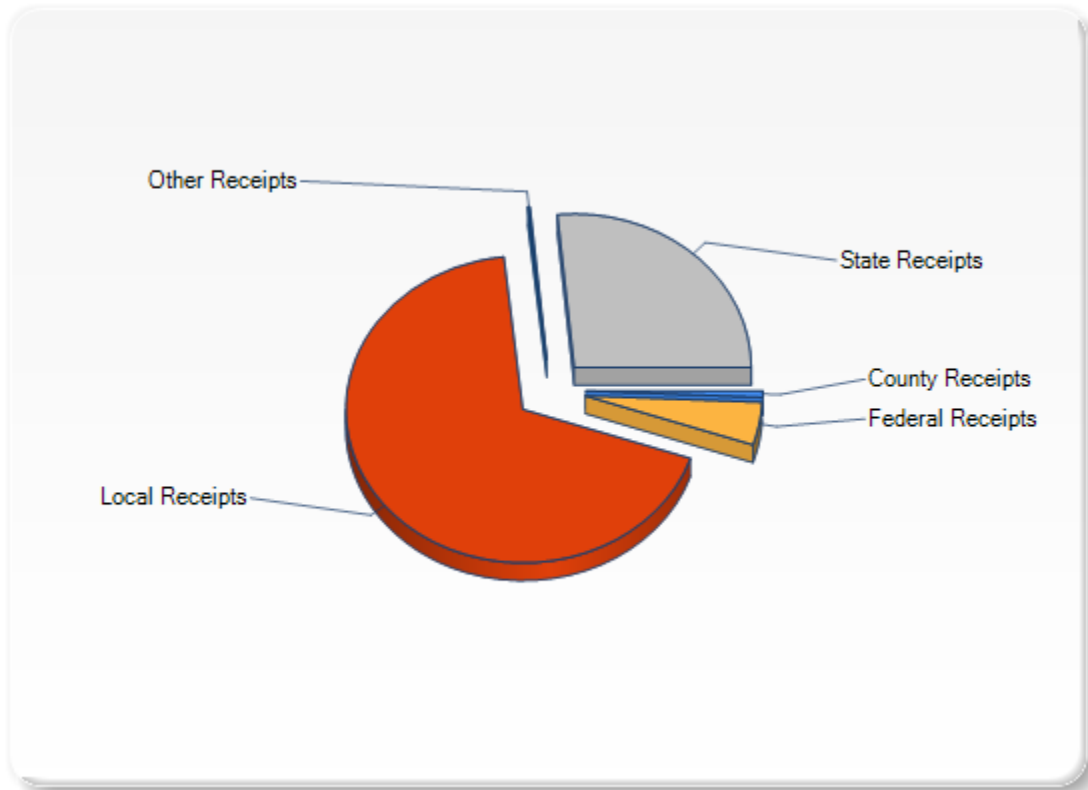


## Receipts 2011-2012 School Year

### 2011-2012 Receipts

<b>County Receipts</b>	<b><u>\$33,248.88</u></b>	<b>0.68 %</b>
<b>Federal Receipts</b>	<b><u>\$221,408.36</u></b>	<b>4.50 %</b>
<b>Local Receipts</b>	<b><u>\$3,347,476.62</u></b>	<b>68.11 %</b>
<b>Other Receipts</b>	<b><u>\$9,302.14</u></b>	<b>0.19 %</b>
<b>State Receipts</b>	<b><u>\$1,303,729.05</u></b>	<b>26.52 %</b>
<b>Total Receipts</b>	<b><u>\$4,915,165.05</u></b>	

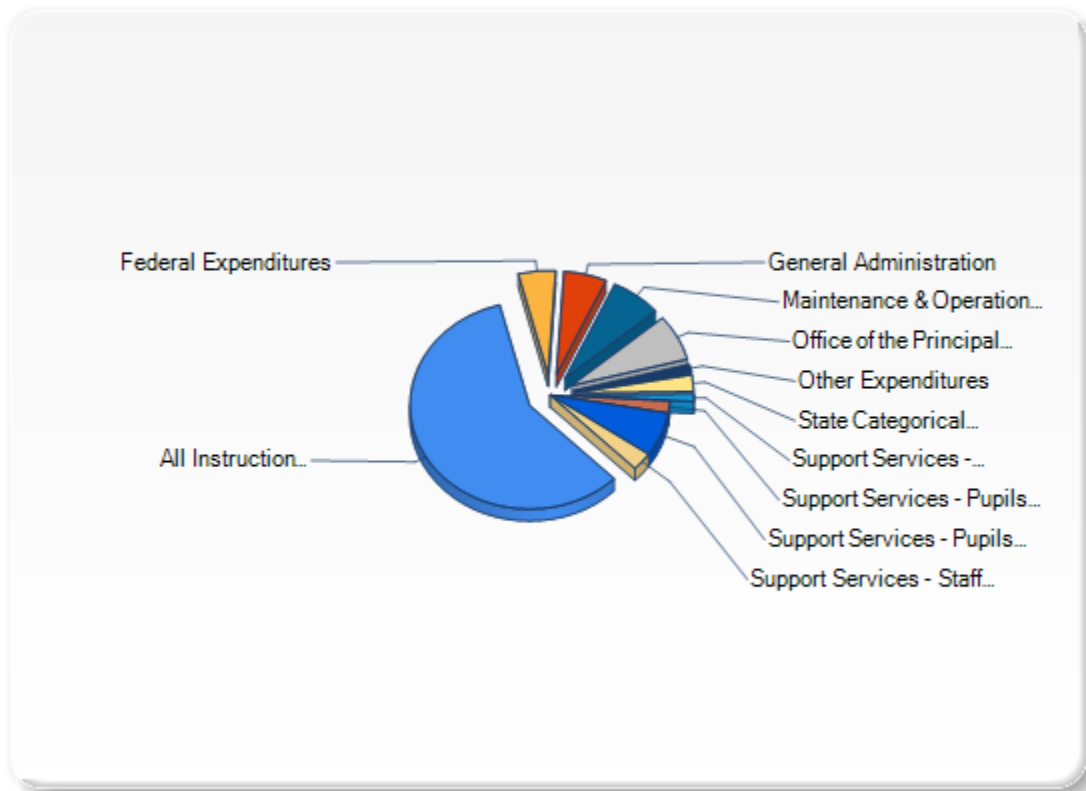
### SCHOOL DISTRICT RECEIPTS



## 2011-2012 Expenditures

	Expenditures	Percent
All Instruction Expenditures	<u>\$2,848,061.97</u>	58.49 %
Federal Expenditures	<u>\$244,824.05</u>	5.03 %
General Administration	<u>\$283,925.65</u>	5.83 %
Maintenance & Operation Expenditures	<u>\$334,804.96</u>	6.88 %
Office of the Principal Expenditures	<u>\$350,362.14</u>	7.20 %
Other Expenditures	<u>\$61,701.21</u>	1.27 %
State Categorical Programs	<u>\$125,086.92</u>	2.57 %
Support Services - Business	<u>\$56,379.78</u>	1.16 %
Support Services - Pupils Expenditures	<u>\$91,891.12</u>	1.89 %
Support Services - Pupils Transportation	<u>\$334,682.43</u>	6.87 %
Support Services - Staff Expenditures	<u>\$137,545.11</u>	2.82 %
Total Expenditures	<u>\$4,812,885.56</u>	

## Expenditures 2011-2012 School Year



## **General information**

District OR-1 Public School is a Class III school that is accredited by the Nebraska Department of Education and the North Central Association. The school is a member of the East Central Nebraska Conference that includes: Conestoga, East Butler, Elmwood-Murdock, Freeman, Johnson County Central, Louisville, Malcolm, Mead, Weeping Water and Yutan.

The District is governed by a six-member Board of Education. Each member is selected for a four year term. Board members must be residents of the school District and each member serves the District with no compensation for their services. The Board of Education holds regular meetings on the second Monday of each month. All board meetings are open to the public and are advertised according to State open meeting laws. Public notice of meetings and legal notices are placed in the Voice News. Current board members are: Clayton Maahs-President, Larry Royal - Vice President, and members, Jaimi Calfee, Kipp Haight, Doug Church and Kevin Schroder.

### **Staffing**

District OR-1 Public Schools is served by an administrative team, Mr. Robert Hanger, Superintendent; Mr. David Bottrell, Secondary Principal, and Mrs. Linde Walter, Elementary Principal and Mr. Aaron Hoeft, Activities and Transportation Director. The Superintendent holds a Specialist degree in Educational Administration and serves a twelve month contract. The Principals hold a Masters degree and serve an eleven month contract.

In addition to the administrative staff, the school is served by forty four certificated teachers. Seventeen of the certificated staff hold a Masters Degree, 38%. Teachers are contracted for 185 days of service. Teachers must hold a minimum of a Bachelors Degree with proper endorsements in their educational teaching field.

The support staff consists of 30 full and part time employees. Included are bookkeeping and clerical staff, food service personnel, transportation personnel, para-professionals and custodians.

The District operates a Pre-School in compliance with Nebraska Department of Education Rule 11.

The District contracts with Education Service Unit #4 for specific services required by the Department of Education including certain diagnostic and evaluation services.

District OR-1 Geographic Size- 128.7 square miles  
Counties included in the school District are Otoe and Lancaster. The northern most edge of the District is the Cass County line and the southernmost edge of the District is the Johnson County line. The K-6 elementary school is located in Bennet and the 7-12 Jr.-Sr. High School is located in Palmyra.

## School Improvement

District OR-1 first committed to the School Improvement Process (SIP) in the fall of 1993. At that time, a significant number of interested persons from the community, staff, and board of education began the process by developing a mission statement for the district. The mission statement and belief statements that were developed are as follows:

“Together, we prepare our students to successfully meet the challenges of the future”

District OR-1 will:

- Model and reinforce a sense of self-respect and respect for others.
- Provide equal opportunity for each student to develop his/her potential.
- Seek to develop a sense of individual responsibility and integrity.
- Seek and integrate educationally sound innovations into the curriculum.
- Provide a safe learning environment.

In the years that followed, a number of objectives were identified and the resources of the district were brought to bear on those challenges. Early areas of concern tended to spotlight the shortcomings associated with facilities and learning tools. With the completion of the Strategic Plan, efforts to improve curricular areas to meet the needs of all students became the focal point.

Vision Statement as adopted June 2013:

“District OR-1 commits to a course of action providing continued academic growth through a curriculum that recognizes limitless potential and inspires faith in a positive future for every student. With a sense of community ownership and responsibility, we will remain fiscally accountable and attentive to current and future high-tech facility and staffing needs.”

The process is now in the first year of a five-year cycle. The following individuals have been appointed to provide the leadership necessary for this endeavor. The steering committee members are:

Kim Jensen	Co-Chair
Matt Smidt	Co-Chair
Jeff Panko	Secondary Staff
Becky Hall	Elementary Staff
Aaron Hoeft	Special Education
Student Council Representatives	Students
Todd Calfee	Parent
Jaimi Calfee	Parent
Larry Royal	Board of Education
Clayton Maahs	Board of Education
Robert Hanger	Ex-officio Member
David Bottrell	Ex-officio Member
Linde Walter	Ex-officio Member

The profile committee members are as follows:

Mark Kotik	Co-Chair
James LaPointe	Co-Chair
Mike Chaffee	Member
Burke Brown	Technology
Matt Smidt	Media

The goal Committee is as follows:

Kim Jensen	High School
Tyler Maas	High School
Stacy Sullivan	Elementary
Gina Christensen	Elementary
Thomas McChristian	Elementary

In addition, the committees are assisted by Suzanne Whisler and Jen Madison of ESU #4 as the process continues.

To date, the steering committee has reaffirmed the mission statement and belief statements created by the original committee. A sub-committee has gathered and analyzed data related to student learning. A data driven selection of a goal for improvement of student learning in math has been identified. During the 2004-05 school year, best practices for improvement of student learning in math were researched and an action plan for addressing that goal was developed. Implementation of those selected practices began during the 2005-06 school year. A review of the school improvement process was conducted by the Nebraska Department of Education during the 2007-08 school year. This year the steering committee completed a timeline of activities designed to keep the school improvement process moving forward in preparation for the external visit scheduled for the Spring of 2013. During that visit the District was accredited for the next five years and received the following:

The external team identified five powerful practices in place within OR-1:

- School Community Partnership
- Communication to Parents
- School Leadership
- Staff
- Character Education

The team also provided two required actions for the next cycle:

Review, revise, and implement a systemic and systematic continuous improvement process PreK-12.

Develop and implement a written PreK-12 curriculum, in all core subjects, aligned with the Nebraska Standards horizontally and vertically, and include a timeline for review and revision.

Work is underway regarding the identified required actions and to continue building on the powerful practices.