



District OR-1 Schools

Palmyra High School
425 F Street, Box 130
Palmyra, NE 68418

Bennet Elementary
50 Dogwood St.
Bennet, NE 68317

Superintendent: Michael Hart
Director of Student Services: Linde Walter
Secondary Principal: Heath Johnson
Elementary Principal: Jared Haag
Activities Director: Aaron Hoeft

www.districtor1.org Twitter: @OR1_Panthers
402-780-5327 Fax: 402-383-4008

PRSRT STD
ECRWSS
U.S.POSTAGE
PAID
EDDM Retail

District OR-1 Newsletter District OR-1 Public Schools July 2025

*****ECRWSS*****

**Local
Postal Customer**

*Together, we prepare our students to successfully meet
the challenges of the future.*

Foundation For Knowledge, District OR-1

Since our beginning in December of 1998

With your contributions of over \$600,000 we have:

- Given back to your community over \$375,000 supporting:
 - Post-Secondary Education
 - Staff Development
 - Athletics
 - Theater
 - Band
 - Elementary and Secondary Education
- While maintaining Foundation-sustaining account balance of over \$400,000

In 19 years \$600,000 of your contributions has turned into over \$775,000 for your community.

* If you shop online with Amazon please consider using "AmazonSmile". By using "smile.amazon.com" and selecting support for the "Foundation For Knowledge District Or-1" Amazon will donate a percentage of each of your purchases to the Foundation.

With your support we will continue our work for the future of your community

Foundation For Knowledge District OR-1 - P. O. Box 130, Palmyra, NE 68418

Enclosed is my/our ☐ individual gift ☐ corporate gift _____

(corporate contact person)

of \$ _____ to the Foundation For Knowledge District OR-1

-OR-

I/We pledge \$ _____. Enclosed is my/our payment of \$ _____.

Balance paid by _____, 20____.

To validate your pledge, your signature is required _____

Name _____

Address _____ Phone _____

City _____ State _____ Zip _____

If an alumni of Palmyra/Bennet School, please list year _____

Please make checks payable to - Foundation For Knowledge District OR-1

Thank you for your investment in the future.



PANTHER

NEWS

District OR-1 Public Schools
425 F Street
Palmyra, NE 68418
<http://www.districtor1.org>

Serving the Communities of Bennet, Palmyra, and Douglas, NE

July 2025

- Follow District OR1 at www.districtor1.org
- Download the app for iOS and Android
- Follow student progress on PowerSchool
- Follow District OR1 on Twitter @OR1_Panthers
- Make sure your school has your e-mail and phone
- Follow official weather at www.1011now.com
- Superintendent Notes
- Construction News
- Transportation Information
- New Staff
- Lunch Payment Option
- 2025-2026 Calendar

Superintendent Notes...by Michael Hart



Panther Families,

I hope you have all had a restful, refreshing, and memorable summer break! It is hard to believe, but with the arrival of our summer newsletter, the **2025-2026** school year is only a few weeks away! Our staff has been working very hard to prepare our classrooms, curriculum, and programs for a successful school year!

That being said, I want to share some important updates and reminders before we all return to school. Please use this newsletter as a guide for organizing information relative to the start of the **2025-2026** school year.

Student, Staff, and Community Kudos:

- Even though it is summer, there has been a lot of activity in and out of our district facilities since school ended. Aside from sports camps, community events, summer enrichment, credit recovery, field trips, high school weightlifting and conditioning, staff curriculum work, driver training, lesson planning, and committee work; our staff and students continue to work hard to make our district even better.
- I would also like to spotlight the hard work of our office support staff, administrators, custodians, technology support staff, food service, and maintenance/transportation personnel. The “behind the scenes” work these individuals do throughout the summer is critical in facilitating efficient and effective operations throughout the school year.
- We are blessed to have such outstanding staff who are committed to serving our students, families, and our community!
- Special congratulations also go out to our students for their continued participation in our camps, clinics, and “team-based” summer activities and to our coaches and sponsors for organizing these activities.

Superintendent: Michael Hart
Director of Student Services: Linde Walter
Palmyra Principal: Heath Johnson
Bennet Principal: Jared Haag
Activities Director: Aaron Hoeft

...Continued. “Superintendent”

Vanco's Rev-Trak Web Store makes paying for school lunches easier than ever.



More than 1,200 districts use the Web Store to accept payments online – including District OR-1. Our Web Store streamlines your payments, saves time, and gives you peace of mind. You can set up your credentials in four steps.

1. Contact Ms. Kristi Holmgren at PHS (402)780-5327 x2. She can set you up to link your email to your students' PowerSchool. Great news! You can also use this to keep up-to-date with grades and attendance. Note: you can skip this step if you already have PowerSchool credentials.
2. Go to districtor1.revtrak.net and click “Log-in”.
3. Select “Create New Account” and enter your information by following onscreen instructions.
4. Once logged in, browse the web store for lunch balance and check out.

- Many of our students also remain busy helping families at home or working at various jobs throughout the area and we are proud of all of their accomplishments and service.
- Finally, strong community support for our district and advocating for high-quality public schools is critical for success. District OR-1 is an excellent school system filled with great students and outstanding staff members, but we simply could not do what we do as a district without the continued support of our community patrons and local businesses.
- We are grateful to the myriad of patrons and businesses who contribute their time and talents to helping our students, staff, and programs thrive!
- In summary, we are very fortunate to serve in a growing and progressive school district with a solid commitment to continued excellence and a “kids first” approach to education. District OR-1 is a great place to be!
- Thank you again for supporting our students, staff, and the district!

School Newsletter:

In this issue of the school newsletter will be information relative to school meals, activities information, facility expansion information, school supply lists, “beginning of the school year” activities and events, lunch applications, physical forms, and other information that will help our families prepare for the new school year.

• ***Please note:*** Subsequent newsletters throughout the 2025-2026 school year will only be distributed ***electronically*** through our school website and social media channels. Listed below is the link for the district's Facebook page and school website:

<https://www.facebook.com/District-OR-1-School>
www.districtor1.org

- Any community patron or organization wanting to receive “hard copies” of any newsletter can call our school offices during regular school hours and our staff will make copies for those requesting the “hard” copies.
- Additional “hard copies” of the district newsletters will also be available at designated local business and community gathering spots like the banks, post office, etc. in the Palmyra and Bennet communities.
- To ensure patrons receive all district information on time, **please make sure you update all family contact information before the start of the school year.**
- If you have questions about updating your information, please contact our school offices.

“Beginning of School” Events and Important Reminders

Monday, August 4th

- All staff return to the district for staff training and beginning of school orientation

•

Thursday, August 7th:

- “Open House” for elementary students from **4:30 - 6:30 p.m.** at Bennet.
- All parents and families are encouraged to come to school to meet teachers, reconnect with friends, and enjoy the fun!

- “Open House” for PHS students from **5:00 - 7:00 p.m.** at the high school.
- All parents and families are encouraged to come to PHS to meet teachers, reconnect with friends, and enjoy the fun!
- We will also be hosting our **Fall Sports Coaches Meetings on Thursday, August 7th, beginning at 6:30 p.m.** at the high school.
 - All students enrolled in fall activities should plan to attend these meetings which will begin in the west main gym.

Monday, August 11th

- First Day of School for students: K-12
- Board of Education regular board meeting **beginning at 6:00 p.m.** at Palmyra High School in the Media Center

Tuesday, August 12th:

- First Day of Preschool at Bennet Elementary School.

Thursday, August 21st:

- Panther Booster Bash at the Olson Complex **at 7:00 p.m.**

Fall Sports:

- Our fall sports season (practices) will also officially begin on **Monday, August 11th.**
- Coaches will communicate directly with student-athletes regarding practice times and team expectations. We look forward to another year of teamwork, growth, and school spirit across all our athletic programs.

Building Project Updates:

- As we finish up the last of our building addition projects, here is an update on what is being accomplished this summer.

Palmyra Junior/ Senior High School:

Restroom Renovations:

- Fixtures, flooring, and tile upgrades in the restrooms on the second floor (near the north entrance across from Mr. Springer’s math classroom) and the restrooms in the first floor south hallway (across from the band room and near the auxiliary gym) are being completed this summer.

Locker Room Renovations:

- Both boys and girls locker rooms at the high school are being updated this summer. The update includes: additional lockers, individual shower areas, upgraded fixtures, flooring, paint, and tile.

Trophy Case:

- An updated trophy case has been placed under the main common stairs near the lunchroom and auxiliary gym.

Olson Complex:

- Additional spectator seating is being added on the south side of the football field. This new bleacher section will host visiting fans and teams during events.

Bennet Elementary School:

- The north bus lane at Bennet has been extended to accommodate all buses utilized for transportation. This extension of the bus lane will help to increase student safety and decrease traffic on the south side of the building during pickup times.
- The Bennet Media Center has also received updates to carpet, shelves, and student learning areas.

Student Meals Update:

- Due to increased food service and delivery costs, school meal pricing will see a modest increase this year. Additional information regarding updated meal rates and directions for completing a Free and Reduced Meal Application will be posted on our district website and shared in the summer newsletter.

Student Cell Phones:

- This school year, **all students in grades K-5 will not be able to use cell phones during the school day.**
- This school year, **all students in grades 6-12 will be not allowed to use their phones during class time or during passing periods.**
- *All students at the junior/ senior high school will be able to check and access their phones during their assigned lunch period.*
- Responsible use will be expected, and violations may result in individual or group restrictions in alignment with district policy.

Transportation and Bus Routes

- A bus letter has been mailed to families that utilize district transportation. It will include route details, pick-up and drop-off times, and transportation contact information.
- Please review the letter carefully and respond promptly with any updates or changes to help us ensure safe and reliable transportation for all students.

Proactive Coaching: Presentation for Parents and Athletes: Sunday, August 27

- We will host a mandatory parent meeting for all parents of student-athletes on **Sunday, August 27 beginning at 6:00 p.m. at Palmyra High School.**
- This event is focused on fostering strong, supportive relationships between parents, coaches, and student-athletes. The evening will begin with a Proactive Coaching Presentation.
- This meeting is essential for setting a positive tone for the upcoming sports seasons.

Please continue to check our district website and follow our social media channels for the latest updates, supply lists, and back-to-school information.

Thank you again for your partnership and trust in District OR-1! We are proud to serve our families and communities, and we look forward to another year of excellence in education.

Enjoy the rest of your summer break!

Go Panthers!
Mike

Full Letter to Panther Families

Dear Parent/Guardian:

This letter is designed to provide information about District OR-1 transportation. As we continue to navigate the challenges of a growing school district, we will be adjusting our district transportation procedures beginning with the **2025-2026** school year. This change will become effective **Monday, August 11th, 2025.**

Communication Protocols:

School will start on **Monday, August 11th**, for all students (Kindergarten-12th grade). Preschool will begin on **Tuesday, August 12th**.

- Mrs. Cathy Fick will again be our transportation coordinator. Cathy is planning to contact each family approximately two weeks before school starts with specific times.

If you are new to the district and would like to request bus service, please contact Cathy Fick at **(402) 540-2879** or email her at fick.cat@districtor1.net.

- If you are a family that has utilized our transportation in the past, please email, call, or text Cathy as soon as possible to let her know your needs for this upcoming school year.

Please note: *Contacting Cathy and verifying all personal contact information (including student medical issues, address, or email changes) is a critical step to verifying that your child is not only on the transportation list but also accurately included in the pick-up and drop-off schedule. If Cathy doesn't hear from you, she will assume no bus service is needed.*

Bus Assignments:

- At the beginning of the upcoming school year, we will have specific route buses designated for each student at each school. To establish consistency, students should consider these route buses as their "home bus". These vehicles will be easily identifiable (Bus#1, Bus#2, etc.), and vehicle and route assignments will generally remain the same unless we have a substitute driver or we have a bus that has been taken out of service for maintenance issues.

We ask that if your child will not be riding the bus for any reason (or will not be riding for an extended period) to please call or text Cathy Fick at **(402) 540-2879** so drivers can adjust their routes and passenger lists. *Please make every attempt to call the night before if possible.*

Switching Buses:

To help with route consistency, please note that students will not be allowed to "switch" bus routes or buses unless there are documented extenuating circumstances and the switch has been approved in advance by Cathy and the building principal. In these instances, parents should communicate the request to Cathy and the school office through a phone call, text, or email at fick.cat@districtor1.net no later than noon that same day.

Routes and Shuttle Schedules:

- Routes and shuttle schedules will be established with

Cathy **no later than Friday, August 1st**, and communicated to parents as soon as possible.

Please note: Any change from the established route or shuttle schedule must be requested in writing and approved by Cathy and the building principal.

Bus Route Coordination:

- Our district utilizes two distinct types of bus transportation to support students and families: **Traditional Bus Routes** and **Shuttle Bus Routes**. Understanding the difference between these services will help ensure safe and timely transportation for all students.

Bus “Route”:

- ✦ A bus route is a predetermined trip that provides daily transportation for qualifying students from home to their school building.

- ✦ Routes are assigned based on the student's home address, and drivers will pick up and drop off students at designated stops near the family residence.

These routes follow a standard schedule unless there is a weather-related school day change (10:00 a.m. late start or other assigned time).

Shuttle:

Shuttle buses are designed to provide intercampus transportation for eligible students needing to travel between buildings for classes or various programs.

We have a morning shuttle and an afternoon shuttle.

Shuttles will only run from the two school sites (Bennet Elementary and PHS).

The **morning shuttle** transports students from their hometown school to the other campus before classes begin.

The **afternoon shuttle** returns students to their hometown school after dismissal.

- Please understand that the routes and specific pick-up and drop-off times may not be finalized until everyone needing bus service is registered. There is also a good chance that specific pick-up and drop-off times may vary slightly until all student passenger lists are verified and we know definitively which students are riding each day.

- Please have your child ready, dressed for the weather, and **waiting outside** at their scheduled time for pickup. Our routes run on very regulated daily schedules, and we will allow a **one-minute wait time** for picking up and getting students on the bus. This one-minute limit facilitates drivers not being late to their next pickup and students arriving on time to school. Thank you in advance for your cooperation.

Option Enrollment:

- As we continue to navigate the challenges of a growing school district, we will also be adjusting our transportation procedures for transporting “option enrollment” students. This change will become effective **Monday, August 11th, 2025**.

- o *Please note: This change will not impact resident students and families that live within the District OR-1 boundaries.*

If your child is “option-enrolled” and resides outside of our district boundary parameters for bus routes, *we will no longer be able to provide **the same level of bus service** outside of these*

boundaries. Changing the level of service doesn't mean that transportation options are no longer available, but the protocols for transportation will be changing as listed below:

Beginning **August 11th, 2025**, we will only be transporting option enrollment students if they reside within a ***one-mile radius*** of the district school boundary or if the address is adjacent to a residence within the district that consistently utilizes district transportation. *For example, “Family A” lives within our district boundaries, and “Family B” lives across the street, yet outside of the district boundaries.*

If families are outside of the designated one-mile radius, we will still provide opportunities for transportation at designated pick-up points in Bennet, Douglas, and Palmyra. These pick-up points are listed below:

Bennet: Bennet Elementary

Douglas: Methodist Church of Douglas (245 W. 3rd Street).

Palmyra: Palmyra Jr-Sr High School (north side entrance)

If children are not brought to designated pick-up points, we will not be able to provide transportation.

If you have any additional questions about district boundaries, please contact Jane Powell at **(402) 780-5327**.

Student “Drop Off” Times in the Morning:

- Please note that our buildings will not have adequate supervision until 7:30 a.m. The doors to both buildings will not be open until after 7:30 a.m. This is a change from last year.

- o All students not enrolled in the before-school rec program at Bennet Elementary School will not be allowed to enter the building until after 7:30 a.m.

Students enrolled in the before-school rec program can enter the elementary building through the east entrance **beginning at 7:00 a.m.**

“Weather Related” Information:

If school operations are disrupted due to weather-related issues (severe storms, snow, etc.) and school is either canceled for the day (or there is a “late start” or “early dismissal”), the district will make every effort to inform parents as soon as possible regarding the decision.

Late Start: When the district announces a late start, school begins at 10:00 a.m. at both buildings. Bus routes and shuttles will run accordingly on these days (*1 hour and 45 minutes later*), and pick-up times will be adjusted as needed to meet the current weather conditions.

Regardless of the weather decision, the information will be shared on local news outlets and our district social media platforms as soon as possible.

Bus Loading and Unloading Areas:

Bennet Elementary School:

All students will load and unload buses on the south side bus lane in the morning before school.

The south bus lane should be kept clear of any traffic from 7:00-8:30 a.m.

All students will load buses on the north side of the school building for the afternoon pickup.

Palmyra Junior / Senior High School.

All students will load and unload buses on the north side of the school building. This is the same as last school year.

Preschool Transportation:

Preschool transportation will be discussed and communicated during preschool home visits conducted by the preschool teacher.

Thank you in advance for your understanding, flexibility, and support of our school district.

If you have additional questions regarding transportation, please contact our district office at (402) 780-5327.

Sincerely,

Michael T. Hart

Additional Bus Transportation Information

Student Drop Off Times in the Morning:

Our buildings will not have adequate supervision until 7:30 a.m. The doors to both buildings will not be open until after 7:30 a.m.

All students not enrolled in the before-school rec program will not be allowed to enter the building until after 7:30 a.m. Students enrolled in the before-school rec program can enter the elementary building through the east entrance beginning at 7:00 a.m.

Shuttle time changes: (Drivers **WILL NOT BE ABLE TO WAIT** and will leave at these scheduled times) (BUS 1 – TODD) (BUS 2 – CLAYTON)

Bennet Elementary to Palmyra– BUS 1 / 7:35 AM, BUS 2 / 7:40 AM

Palmyra High School to Bennet– BUS 1 / 7:53 AM, BUS 2 / 7:55 AM

BUS 3 – STEVE – Bennet Town Pick Up for Elementary Kids – Cathy will let you know specific times prior to the first day of school. Bennet Town stops before 7:40 am are junior high and high school students only.

Bus Loading and Unloading Areas:

DO NOT GO AROUND SCHOOL BUS STOP ARMS WHILE THEY ARE OUT.

Bennet Elementary School:

All students will load and unload buses on the **south side bus lane** in the morning before school. The bus lane should be kept clear of any traffic from 7:00-8:30 a.m. Drive slow as children are crossing the road.

All students will load buses on the **north side of the school building** for the afternoon pickup.

Palmyra Junior / Senior High School.

All students will load and unload buses on the **north side of the school building.** Please keep clear of the bus lane from 7:30 am 8:30 am. Drive slow as children are crossing the road.

Preschool Transportation: Preschool transportation will be discussed and communicated during preschool home visits conducted by the preschool teacher. Thank you in advance for your understanding, flexibility, and support of our school district.

If you have additional questions regarding transportation, please contact Cathy Fick.

Please go over the rules of the bus with your student. No food, candy, suckers, sunflower seeds. Only water allowed. Listen to the driver. No standing, switching seats, leaning out the windows. No animals or skateboards. No name calling, fighting, making fun of kids. No yelling. No sprays (ex. Deodorant, perfume, etc). No picture/video taking. No throwing objects. Sit and face the front.

Bus Assignments:

At the beginning of the upcoming school year, we will have specific route buses designated for each student at each school. To establish consistency, students should consider these route buses as their “home bus”. These vehicles will be easily identifiable (Bus # 1, etc.), and vehicle and route assignments will generally remain the same unless we have a substitute driver or we have a bus that has been taken out of service for maintenance issues.

We ask that if your child will not be riding the bus for any reason (or will not be riding for an extended period) to please call, email or text Cathy Fick at (402) 540-2879 so drivers can adjust their routes and passenger lists. *Please make every attempt to call the night before if possible.*

Switching Buses: Please note that students will not be allowed to switch bus routes or buses unless there are documented extenuating circumstances and the switch has been approved by Cathy and the building principal. In these instances, parents must communicate the request to Cathy and the school office through a phone call, text, or email fick.cat@districtor1.net no later than noon that same day.

Routes and Shuttle Schedules: Routes and shuttle schedules must be established with Cathy by August 1st, and any change from that schedule must be requested in writing and approved by Cathy and the building principal.

If your child has problems on the bus, let Cathy know. Drivers can't see or hear while driving kids safely.

ACTIVITIES NEWS

Preseason Activity Information. *If you don't see your fall sport/activity information in this newsletter your coach/sponsor will be reaching out to you with information.*

HS fall season practices officially begin on Monday, August 11.

All players need to have a physical completed prior to the start of practice. If you are unable to get one by the first day of practice, you may attend, but only watch.

Concussion Testing

A link will be emailed to all athlete's school email account, that will allow them to complete their concussion test on a computer or Chromebook on their own time. Please look for an email after August 1st with details and instructions.

Sports Physicals

If you are in grades 7-12 and plan to participate in a sport for the upcoming 25-26 school year, you must have a current physical on file, dated after May 1, 2025, and in the office prior to the first practice. An NSAA permission form is also needed on file prior to the first contest. Both the physical form and NSAA form can be found and printed from the school website under the [HS Athletics tab](#).

Fall Team Sports Meetings

Thursday, August 7th @ 6:30 p.m. in the West Gym. Large group session (10-15mins) followed by individual fall sports meetings. Please plan to attend if you have a child in a fall sport. This also runs in conjunction with the Elementary and HS open houses.

2025-26 Activity Passes/Fees

For those wanting to purchase single or family passes, which are good for all athletic events at the school (exceptions; One Act, Main Stage, District and Conference contests), may do so at the Booster Bash scheduled for August 21st. Otherwise, passes may be purchased in the east downstairs office during normal school hours. Pass fees are as follows:

* Senior Citizen Pass (60+): \$5

* Single Pass: \$65

* Family Pass: \$130

* Regular daily event admission:

JH Contest: Adults \$5, Students (K-12) \$3

HS Contest: Adults \$6, Students (K-12) \$4

Student Activity Fee (7-12): \$40—Required for a student participating in a school sponsored activity.

Prom Fee: (new in 2023)—Starting in 7th grade and through their junior year, each student will pay a \$15 fee that will go towards their senior prom. This will eliminate the need for class fundraising and ensure that funds are available for the cost of the facility rental, decorations, DJ and snack food. Additional leftover money from the prom fees will go towards the costs of cap and gown. Graduating classes of 2026 and 2027 will need to continue fundraising when they are juniors to make up the dif-

ference that was not collected from the beginning of their 7th grade year. Graduating classes of 2028 and beyond should have enough money from fees to cover prom expenses.

Activities Calendar

The Activities Calendar for the 2025-26 school year is linkable to Google Calendar starting July 1st by using the [school website](#) and clicking on the calendar icon on the main page. At the top of the calendar you can click the "Subscribe" tab to add it to your personal calendar. Another option is to download the "rSchool" app from your app store. Do a search for "Activity Scheduler" and follow the set up options for viewing our school's calendar. A final option is to use the www.eastcentralnebraskaconf.org link to view the school's events and activities through the summer and next school year. **However, we will be moving from the "rSchool" platform to "Bound" in the coming month. This will change the way the calendar is accessed. In the meantime, the above calendar option will work. New instructions on how to access the calendar will be sent out when it is ready.**

Addition of HS Baseball

New to the 2025-26 school year will be HS baseball. This is a spring sport and will run in conjunction with boys' golf and track. The current schedule of games can be accessed using the activities calendar or visiting our school website. All home contests will be held at the Olson Sports Complex Baseball Field.

Special Presentation

A guest speaker/presentation (Proactive Coaching) is scheduled for **August 24th @ 6 p.m.** in the High School West Gym. This presentation is required for parents of youth, middle school and high school athletes. Please mark your calendars for this event and plan to attend.

2025-26 Booster Bash

Will be held at the Olson Complex on **Thursday August 21st**. Food and various booths selling apparel, activity passes and other activity information will be set up and ready by 5 p.m. The program portion will begin at 7 p.m. The HS VB team will have a scrimmage starting around 4 p.m. in the HS West Gym that's open to the public.

Requests for Facilities use for 2025-2026

Last year it worked really well to have all requests go through one assigner to coordinate youth practice times. We will do this again for the 2025-26 school year. Practice slots are Monday thru Friday 6 p.m.-9 p.m., Saturday 8 a.m.-9 p.m. and Sunday 12 p.m.-6 p.m., at either the elementary gym or the high school east gym. Please note that rescheduled, changed or added school activity events to the calendar take precedence over outside schedule events. We will do our best to keep these at a minimum. At this time, we plan on allowing youth practices to start Monday August 25th. Please contact Asha Cooper for youth basketball practice scheduling and Steph Peterson for youth volleyball practice scheduling. All other requests can be made to Aa-



Bennet Back to School Newsletter | 2025-2026 School Year

Welcome Back, Bennet Families!

We hope your summer has been full of sunshine, smiles, and special memories. As we gear up for another amazing school year at Bennet Elementary, we're excited to welcome both new and returning families back into our school community.

Class Placement Information

Teacher placements will be shared with families at the end of July. We know how eager students are to find out whose class they'll be in, and we appreciate your patience as we finalize all placements to create well-balanced, supportive classroom communities.

Bennet Elementary Open House

Join us for our Elementary Open House to meet your child's teacher, explore classrooms, and get a feel for the year ahead. This is a great opportunity to connect with our staff, drop off supplies, and ease those first-day jitters.

Thursday, August 7th | 4:30–6:30 p.m. at Bennet Elementary

Important Dates

- Aug 7- Bennet Back to School Night- 4:30-6:30
- Aug 11- First Day of School (K-12)
- Aug 12- First Day of School (Preschool)
- Aug 19- School Picture Day
- Sep 12- Bennet Fun Run at Olson Complex

What's New This Year?

One Daily Specials Period

This year, students will have a 50-minute, 4 day rotating "specials" block each day consisting of art, PE, computer, and library. Music will be a separate period once per week for 30 minutes. With this change, we are eliminating the additional afternoon PE time that was previously in place, allowing for a more streamlined and focused school day, with a dedicated common planning time for each grade level team.

Amplify CKLA: A New Reading Curriculum

We are launching Amplify CKLA (Core Knowledge Language Arts), our new comprehensive reading and language arts curriculum. CKLA is designed to build strong foundational reading skills and deepen students' knowledge through rich content in science, history, and literature.



Bennet Back to School Newsletter | 2025-2026 School Year

We're excited about the possibilities this brings to our students' reading journeys. With this change, we ask for patience as many of our reading assessments and core curriculum tasks will be changing. I will communicate more about this change during Quarter 1 as we prepare to report reading progress during conferences and at the end of the quarter with report cards.

Introducing WIN Time (What I Need)

New this year is our WIN period, a dedicated time each day for WIN Math and WIN Reading. Every student will be placed in a small group based on their current academic needs. Whether a child needs enrichment, on-level support, or targeted intervention, WIN ensures that every student gets instruction that's just right for them. It's one more way we're committed to helping each child grow, thrive, and succeed.

Library Renovation

After completing many of our initial bond projects last school year, we were thrilled to allocate remaining funds toward renovating the elementary library. In conversations with community members who once attended Bennet Elementary themselves, I was surprised to learn that the library hasn't changed in nearly 30 years. Our new library space is designed to be fun, engaging, and interactive, a place where students can grow their love of reading. While the renovation may not be fully finished by the first day of school, we invite all families to stop by and explore the new space during open house night.

Bennet Elementary Fun Run

As part of our library renovation, we're also working to raise funds for new books, both to fill our refreshed shelves and to replace older titles that have been well-loved over the years. To help reach this goal, we're teaming up with Boosterthon to host a Fun Run on September 12th at the Olson Complex. We'll be sharing more details soon, and we encourage families and community members to come cheer on our students as they race around the track during this exciting event!

We are truly looking forward to another wonderful school year full of learning, laughter, and growth. As always, thank you for your partnership and trust. Together, we'll make this school year the best one yet!

Jared Haag

Bennet Elementary Principal

New Staff at District OR1

A new year brings new faces to School District OR1. Please welcome the following new teachers to our schools.

Elise Stoike - Middle School English



1. Where are you originally from? *Alliance, NE*
2. What college did you graduate from? *University of Nebraska - Lincoln*
3. What book, movie, or show have you loved recently? *Sunrise on the Reaping (new Hunger Games book)*
4. What's your go-to coffee or tea order? *Iced vanilla matcha!*

BONUS: Give me one interesting fact about yourself. *I have watched the TV show "Friends" 17 times all the way*

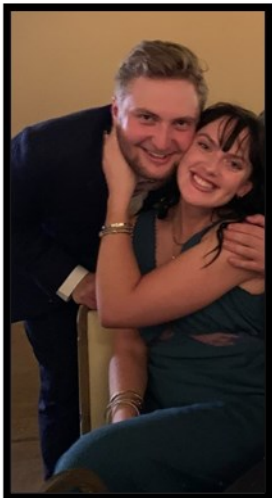
through!



Tammy Harris - Middle School Social Studies

1. Where are you originally from? *Elwood, NE*
2. What college did you graduate from? *UNL, UNO, UNI*
3. What book, movie, or show have you loved recently? *The Little Liar by Mitch Albom*
4. What's your go-to coffee or tea order? *Gold Rush Cold Brew from Ziggi's Coffee!*

BONUS: Give me one interesting fact about yourself. *I lived in Germany for 5 years!*



Shea Spaulding - Substitute

1. Where are you originally from? *Sprague, NE*
2. What college did you graduate from? *University of Nebraska - Lincoln*
3. What book, movie, or show have you loved recently? *Show = Game of Thrones*
Movie = Warfare
Book = The Outpost by Jake Tapper
4. What's your go-to coffee or tea order? *Caramel latte*

BONUS: Give me one interesting fact about yourself. *I love sports.*

Ky'Lee Baumert - Physical Therapist



1. Where are you originally from? *Pawnee City, NE*
2. What college did you graduate from? *I graduated from Wayne State College with my bachelor's degree and earned my Doctor of Physical Therapy from the University of Nebraska Medical Center.*

3. What book, movie, or show have you loved recently? *The Night Agent and Lincoln Lawyer*

4. What's your go-to coffee or tea order? *My favorite is a sugar-free raspberry latte with oat milk and The Bean Box nails it every time!*

BONUS: Give me one interesting fact about yourself. *We had four kids three and under—a busy, caffeine-fueled blur that kept us on our toes. Somehow, we all survived.*

6th-Grade Supplies List:

- 1 single-subject spiral notebook
- 1 red folder
- 1 green folder
- 1 blue folder
- 1 yellow folder
- 1 black folder
- 1 folder your color/design choice
- 24-40 pack mechanical pencils
- 1 package washable markers
- 1 package-colored pencils
- basic calculator
- 1 package Clorox wipes or 1 package multiple Clorox wipes
- no binders
- no toys



DISTRICT OR-1

PALMYRA JUNIOR-SENIOR HIGH SCHOOL--BENNET ELEMENTARY
P.O. BOX 130 PALMYRA, NE 68418 402-780-5327 www.districtor1.org

Michael Hart **Heath Johnson** **Jared Haag** **Aaron Hoeft**
Superintendent **Secondary Principal** **Elementary Principal** **Activities Director**

July 7, 2025

Dear Parent/Guardian:

Children need healthy meals to learn. **District OR-1 – Bennet/Palmyra** offers healthy meals every school day. Breakfast costs: Elementary **\$2.25**; JH/HS **\$2.50**. Lunch costs: Elementary **\$3.30**, JH/HS **\$3.40**. **Your children may qualify for free or reduced price meals.** Reduced price is **\$.30** for breakfast and **\$.40** for lunch. If your child(ren) qualified for free or reduced price meals at the end of last school year, you must submit a new application by **September 9, 2025** in order to avoid an interruption in meal benefits.

This packet includes an application for free or reduced price meal benefits and a set of detailed instructions. Below are some common questions and answers to help you with the application process.

1. WHO CAN GET FREE OR REDUCED PRICE MEALS?

- All children in households receiving benefits from the Supplemental Nutrition Assistance Program (SNAP), Temporary Assistance for Needy Families (TANF) or the Food Distribution Program on Indian Reservations (FDPIR) are eligible for free meals.
- Foster children that are under the legal responsibility of a foster care agency or court are eligible for free meals.
- Children participating in their school's Head Start program are eligible for free meals.
- Children who meet the definition of homeless, runaway, or migrant are eligible for free meals.
- Children may receive free or reduced price meals if your household's income is within the limits on the Federal Income Eligibility Guidelines. Your children may qualify for free or reduced price meals if your household income falls at or below the limits on this chart.

2. HOW DO I KNOW IF MY CHILDREN QUALIFY AS HOMELESS, MIGRANT, OR RUNAWAY? Do the members of your household lack a permanent address? Are you staying together in a shelter, hotel, or other temporary housing arrangement? Does your family relocate on a seasonal basis? Are any children living with you who have chosen to leave their prior family or household? If you believe children in your household meet these descriptions and haven't been told your children will get free meals, please call or e-mail **Michael Hart 425 F St, Palmyra, Ne 68418, 402-780-5327, hart.mic@districtor1.net**.

3. DO I NEED TO FILL OUT AN APPLICATION FOR EACH CHILD? No. *Use one Free and Reduced Price School Meals Application for all students in your household.* We cannot approve an application that is not complete, so be sure to fill out all required information. Return the completed application to: **Jane Powell, 425 F St, Palmyra, Ne 68418, 402-780-5327, powell.jan@districtor1.net**.

4. SHOULD I FILL OUT AN APPLICATION IF I RECEIVED A LETTER THIS SCHOOL YEAR SAYING MY CHILDREN ARE ALREADY APPROVED FOR FREE MEALS? No, but please read the letter you got carefully and follow the instructions. If any children in your household were missing from your eligibility notification, contact **Jane Powell, 425 F St, Palmyra, Ne 68418, 402-780-5327, powell.jan@districtor1.net** immediately.

5. CAN I APPLY ONLINE? You are encouraged to complete an online application instead of a paper application if your school district makes this option available. The online application has the same requirements and will ask you for the same information as the paper application. Visit

www.districtor1.org to begin or to learn more about the online application process. Contact **Jane Powell, 425 F St, Palmyra, Ne 68418, 402-780-5327, powell.jan@districtor1.net**.if you have any questions about the online application.

6. MY CHILD'S APPLICATION WAS APPROVED LAST YEAR. DO I NEED TO FILL OUT A NEW ONE? Yes. Your child's application is only good for that school year and for the first few days of this school year. You must send in a new application unless the school told you that your child is eligible for the new school year. If you do not send in a new application that is approved by the school or you have not been notified that your child is eligible for free meals, your child will be charged the full price for meals.
7. I GET WIC. CAN MY CHILDREN GET FREE MEALS? Children in households participating in WIC may be eligible for free or reduced price meals. Please send in an application.
8. WILL THE INFORMATION I GIVE BE CHECKED? Yes. We may also ask you to send written proof of the household income you report.
9. IF I DON'T QUALIFY NOW, MAY I APPLY LATER? Yes, you may apply at any time during the school year. For example, children with a parent or guardian who becomes unemployed may become eligible for free and reduced price meals if the household income drops below the income limit.
10. WHAT IF I DISAGREE WITH THE SCHOOL'S DECISION ABOUT MY APPLICATION? You should talk to school officials. You also may ask for a hearing by calling or writing to: **Michael Hart, 425 F St, Palmyra, Ne 68418, 402-780-5327, hart.mic@districtor1.net**.
11. MAY I APPLY IF SOMEONE IN MY HOUSEHOLD IS NOT A U.S. CITIZEN? Yes. You, your children, or other household members do not have to be U.S. citizens to apply for free or reduced price meals.
12. WHAT IF MY INCOME IS NOT ALWAYS THE SAME? List the amount that you normally receive. For example, if you normally make \$1000 each month, but you missed some work last month and only made \$900, put down that you made \$1000 per month. If you normally get overtime, include it, but do not include it if you only work overtime sometimes. If you have lost a job or had your hours or wages reduced, use your current income.
13. WHAT IF SOME HOUSEHOLD MEMBERS HAVE NO INCOME TO REPORT? Household members may not receive some types of income we ask you to report on the application, or may not receive income at all. Whenever this happens, please write a 0 in the field. However, if any income fields are left empty or blank, those will also be counted as zeroes. Please be careful when leaving income fields blank, as we will assume you meant to do so.
14. WE ARE IN THE MILITARY. DO WE REPORT OUR INCOME DIFFERENTLY? Your basic pay and cash bonuses must be reported as income. If you get any cash value allowances for off-base housing, food, or clothing, it must also be included as income. However, if your housing is part of the Military Housing Privatization Initiative, do not include your housing allowance as income. Any additional combat pay resulting from deployment is also excluded from income.
15. WHAT IF THERE ISN'T ENOUGH SPACE ON THE APPLICATION FOR MY FAMILY? List any additional household members on a separate piece of paper, and attach it to your application. Contact **Jane Powell, 425 F St, Palmyra, Ne 68418, 402-780-5327, powell.jan@districtor1.net** to receive a second application.
16. MY FAMILY NEEDS MORE HELP. ARE THERE OTHER PROGRAMS WE MIGHT APPLY FOR? To find out how to apply for SNAP or other assistance benefits, please go online to ACCESSNebraska.ne.gov or call 1-800-383-4278.

If you have other questions or need help, call **402-780-5327**.

Sincerely, *Jane Powell*

Instructions for Completing the Free & Reduced Price School Meals Family Application

For households receiving benefits from the Supplemental Nutrition Assistance Program (SNAP), Temporary Assistance for Needy Families (TANF) or the Food Distribution Program on Indian Reservations (FDPIR), follow these instructions:

- Part 1:** List each child's name, the school they attend and their grade.
Part 2: Enter household's Master Case Number if the household qualifies for SNAP, TANF or FDPIR.
Part 3: Skip this part.
Part 4: Complete this part. An adult must sign the form.
Part 5: This part is optional and does not affect your children's eligibility for free or reduced price meals. If you do not select race or ethnicity, one may be selected based on visual observation.

For households with FOSTER, HOMELESS, MIGRANT or RUNAWAY CHILDREN, follow these instructions:

If all children in the household are foster children:

- Part 1:** List all foster children, the school they attend and their grade. Check the box indicating the child is a foster child.
Part 2: Skip this part.
Part 3: Skip this part.
Part 4: Complete this part. An adult must sign the form.
Part 5: This part is optional and does not affect your children's eligibility for free or reduced price meals. If you do not select race or ethnicity, one may be selected based on visual observation.

If some of the children in the household are foster children or are homeless, migrant or runaway children:

- Part 1:** List all children, the school they attend and their grade. Check the appropriate box.
Part 2: If the household does not have a Master Case Number, skip this part.
Part 3: Follow these instructions to report total household income from last month.
Column 1 – Household Members: List the first and last name of **each** person living in your household, related or not (such as grandparents, other relatives or friends) who share income and expenses. Attach another sheet of paper if necessary.
Column 2 - Gross Income and How Often it was Received: Gross income is the amount earned **before taxes and other deductions**; it is not your take-home pay. For each household member, list each type of income received for the month. You must also report how often the money is received – weekly, every other week, twice a month, or monthly.

Earnings from Work includes the following:

- Salary, wages, cash bonuses
- Net income from self-employment (farm or business)

If you are in the U.S. Military, include:

- Basic pay and cash bonuses (do not include combat pay, Family Subsistence Supplemental Allowance (FSSA) payments or privatized housing allowances)
- Allowances for off-base housing, food and clothing

Do not include income from SNAP, FDPIR, WIC, Federal education benefits and foster care payments.

Public Assistance/Child Support/Alimony includes the following:

- Unemployment benefits, Worker's compensation
- Supplemental Security Income (SSI), Cash assistance from state or local government
- Veteran's benefits (VA benefits), Strike benefits
- Child support payments, Alimony payments

Pensions/Retirement/All Other Income includes the following:

- Social Security payments (including railroad retirement and black lung benefits)
- Private pensions or Disability benefits
- Regular income from trusts or estates, Annuities, Investment income, Earned interest, Rental income and *Regular* cash payments received from outside the household.

If you have no income, write "0" or leave the income field blank. By doing this, you are certifying there is no income to

report.

Household Size: Enter the total number of people in your household.

Social Security Number: The adult signing the form must list the last four digits of their Social Security Number (SSN) or check the box to the right labeled "Check if no SSN."

Part 4: Complete this part. An adult must sign the form.

Part 5: This part is optional and does not affect your children's eligibility for free or reduced price meals. If you do not select race or ethnicity, one may be selected based on visual observation.

Please note: Children who meet the definition of homeless, migrant or runaway, are eligible for free meals. However, the school district must have documentation on file from a migrant coordinator, homeless/runaway liaison or the district's Direct Certification list to approve the child for free meals.

For ALL other households, follow these instructions:

Part 1: List all children, the school they attend and their grade.

Part 2: If the household does not have a Master Case Number, skip this part.

Part 3: Follow these instructions to report total household income from last month.

Column 1 – Household Members: List the first and last name of **each** person living in your household, related or not (such as grandparents, other relatives or friends) who share income and expenses. Attach another sheet of paper if necessary.

Column 2 - Gross Income and How Often it was Received: Gross income is the amount earned before taxes and other deductions; it is not your take-home pay. For each household member, list each type of income received for the month. You must also report how often the money is received – weekly, every other week, twice a month, or monthly.

Earnings from Work includes the following:

- Salary, wages, cash bonuses
- Net income from self-employment (farm or business)

If you are in the U.S. Military, include:

- Basic pay and cash bonuses (do not include combat pay, Family Subsistence Supplemental Allowance (FSSA) payments or privatized housing allowances)
- Allowances for off-base housing, food and clothing

Do not include income from SNAP, FDPIR, WIC, Federal education benefits and foster care payments.

Public Assistance/Child Support/Alimony includes the following:

- Unemployment benefits, Worker's compensation
- Supplemental Security Income (SSI), Cash assistance from state or local government
- Veteran's benefits (VA benefits), Strike benefits
- Child support payments, Alimony payments

Pensions/Retirement/All Other Income includes the following:

- Social Security payments (including railroad retirement and black lung benefits)
- Private pensions or Disability benefits
- Regular income from trusts or estates, Annuities, Investment income, Earned interest, Rental income and *Regular* cash payments received from outside the household.

If you have no income, write "0" or leave the income field blank. By doing this, you are certifying there is no income to report.

Household Size: Enter the total number of people in your household.

Social Security Number: The adult signing the form must list the last four digits of their Social Security Number (SSN) or check the box to the right labeled "Check if no SSN."

Part 4: Complete this part. An adult must sign the form.

Part 5: This part is optional and does not affect your children's eligibility for free or reduced price meals. If you do not select race or ethnicity, one may be selected based on visual observation.

Computing Income for Self-Employed Individuals

Individuals who are self-employed or engaged in farming may experience variations in cash flow and cannot easily report a monthly income. These individuals can use their 2024 U.S. Individual Income Tax Return Form 1040 to report self-employment income for the free and reduced-price meal application. The income to report is income derived from the business venture less operating costs incurred in the generation of that income. Deductions for personal expenses such as interest on home mortgages, medical expenses and other similar non-business items are not allowed in reducing gross business income.

When completing this form, **losses** (negative numbers) reported on any of the lines below are included when determining the **total** self-employed income. If the total income is a negative number, it is to be recorded as zero on the meal application in the column labeled "All Other Income".

Zero income resulting from use of the 1040 Form does not require follow-up.

Important Reminders from the U.S. Individual Income Tax Return Form 1040:

Line 1 cannot be used to report current income. Income from wages or salaries must be reported on the application for the most recent month.

Line 9 (Total Income) and line 11 (Adjusted Gross Income) cannot be used for the purpose of applying for free and reduced-price meals.

The five line items listed below are used to determine allowable self-employment income.

From the first page of the U.S. Individual Income Tax Return Form 1040:

Line 7 Capital Gain or (loss) _____

From the U.S. Individual Income Tax Return Form 1040 – SCHEDULE 1 - under Part 1 - Additional Income:

Line 3 Business Income or (loss) _____

Line 4 Other Gains or (losses) _____

Line 5 Rental Real Estate, etc. _____

Line 6 Farm Income or (loss) _____

Total of the above five lines: _____ **equals annual self-employed income ***

* Report this figure on the meal application in the column labeled "All Other Income".

If the total of the above lines is a negative number, it must be changed to zero before it is transferred to the meal application.

NOTE: This form is used only to report income from self-employment and/or farming. If any members of the household have income from other jobs, the gross income from those jobs must be reported on the meal application form.

Return Completed Application to:

District OR 1 Public Schools

Part 1: Children in School

List names of all children in school (First, Middle Initial, Last).
If all children listed are foster, skip to Part 4 to sign the form.
If some of the children are foster or are homeless, migrant or runaway children, complete all steps of the application.

Grade

Name of School Child Attends

Check all that apply:

Foster Child ☐ Homeless, Migrant, Runaway ☐

			<input type="checkbox"/>	<input type="checkbox"/>
			<input type="checkbox"/>	<input type="checkbox"/>
			<input type="checkbox"/>	<input type="checkbox"/>
			<input type="checkbox"/>	<input type="checkbox"/>
			<input type="checkbox"/>	<input type="checkbox"/>

Part 2: Assistance Programs – SNAP, TANF or FDIPIR Benefits

Enter **MASTER CASE NUMBER** if household qualifies for SNAP, TANF or FDIPIR:
(Social Security numbers, Medicaid numbers and EBT numbers are not accepted.) Skip to Part 4

Part 3: Total Household Gross Income – You must tell us how much and how often.**1. Household Members**

List **everyone** in the household, current income each person earns in **whole dollars** (no cents) & how often. Entering "0" or leaving the income field blank certifies no income to report. A foster child's **personal** use income must be listed.

2. Gross Income (before taxes) and How Often it was Received

Earnings from Work before deductions

Public Assistance, Child Support, Alimony

Pensions, Retirement and All Other Income

Income

How often

Income

How often

Income

How often

Total Number of Household Members:
(Children and Adults)

Last four digits of Social Security Number (SSN) of the adult signing this form: XXX – XXX – _____

Check if no SSN ☐**Part 4: Adult Signature and Contact Information – An adult household member must sign the application.**

"I certify (promise) that all information on this application is true and that all income is reported. I understand that this information is given in connection with the receipt of Federal funds and that school officials may verify (check) the information. I am aware that if I purposely give false information, my children may lose meal benefits and I may be prosecuted under applicable State and Federal laws."

Sign here:

Print name:

Date:

Street Address (if available):

Zip:

Daytime Phone:

Part 5: Children's Ethnic and Racial Identities – Optional**Check one Ethnic Identity:** – and – **Check one or more Racial Identities:**☐ Hispanic or Latino☐ Asian☐ Black or African American☐ Native Hawaiian or☐ Not Hispanic or Latino☐ White☐ American Indian or Alaskan Native

other Pacific Islander

Do Not Fill Out the Section Below - For School Use Only

Annual Income Conversion:

Weekly X 52;

Every 2 weeks X 26;

Twice a month X 24;

Monthly X 12

Total Household Size: _____

☐ Free☐ Reduced☐ Denied☐ Income☐ Income

Reason for denial:

☐ Categorically eligible:☐ Income too high☐ SNAP/TANF/FDIPIR☐ Incomplete application☐ Foster Child☐ Homeless/Migrant/Runaway:

(Official Documentation Required at School)

Total Income: _____ per

☐ Year ☐ Month ☐ 2 X Mo ☐ Every 2 Wks ☐ Week

Signature of Determining Official:

Date Approved:

FOR THE VERIFICATION PROCESS ONLY:

Signature of Confirming Official:

Date Confirmed:

Signature of Verifying Official:

Date Verified:

Date Withdrawn From School:

Your children may qualify for free or reduced price meals if your household income falls at or below the limits on this chart.

FEDERAL INCOME CHART for School Year 2025-26					
Household size	Yearly	Monthly	Twice per Month	Every Two Weeks	Weekly
1	28,953	2,413	1,207	1,114	557
2	39,128	3,261	1,631	1,505	753
3	49,303	4,109	2,055	1,897	949
4	59,478	4,957	2,479	2,288	1,144
5	69,653	5,805	2,903	2,679	1,340
6	79,828	6,653	3,327	3,071	1,536
7	90,003	7,501	3,751	3,462	1,731
8	100,178	8,349	4,175	3,853	1,927
Each additional person:	10,175	848	424	392	196

The **Richard B. Russell National School Lunch Act** requires the information on this application. You do not have to give the information, but if you do not, we cannot approve your child for free or reduced price meals. You must include the last four digits of the social security number of the adult household member who signs the application. The last four digits of the social security number are not required when you apply on behalf of a foster child or you list a Supplemental Nutrition Assistance Program (SNAP), Temporary Assistance for Needy Families (TANF) Program or Food Distribution Program on Indian Reservations (FDPIR) case number or other FDPIR identifier for your child or when you indicate that the adult household member signing the application does not have a social security number. We will use your information to determine if your child is eligible for free or reduced price meals and for administration and enforcement of the lunch and breakfast programs. We may share your eligibility information with education, health and nutrition programs to help them evaluate, fund or determine benefits for their programs, auditors for program reviews and law enforcement officials to help them look into violations of program rules.

Non-Discrimination Statement: This explains what to do if you believe you have been treated unfairly.

In accordance with federal civil rights law and U.S. Department of Agriculture (USDA) civil rights regulations and policies, this institution is prohibited from discriminating on the basis of race, color, national origin, sex (including gender identity and sexual orientation), disability, age, or reprisal or retaliation for prior civil rights activity.

Program information may be made available in languages other than English. Persons with disabilities who require alternative means of communication to obtain program information (e.g., Braille, large print, audiotape, American Sign Language), should contact the responsible state or local agency that administers the program or USDA's TARGET Center at (202) 720-2600 (voice and TTY) or contact USDA through the Federal Relay Service at (800) 877-8339.

To file a program discrimination complaint, a Complainant should complete a Form AD-3027, USDA Program Discrimination Complaint Form which can be obtained online at: <https://www.usda.gov/sites/default/files/documents/USDA-OASCR%20P-Complaint-Form-0508-0002-508-11-28-17Fax2Mail.pdf>, from any USDA office, by calling (866) 632-9992, or by writing a letter addressed to USDA. The letter must contain the complainant's name, address, telephone number, and a written description of the alleged discriminatory action in sufficient detail to inform the Assistant Secretary for Civil Rights (ASCR) about the nature and date of an alleged civil rights violation. The completed AD-3027 form or letter must be submitted to USDA by:

- (1) Mail: U.S. Department of Agriculture
Office of the Assistant Secretary for Civil Rights
1400 Independence Avenue, SW
Washington, D.C. 20250-9410
- (2) Fax: (833) 256-1665 or (202) 690-7442; or
- (3) Email: program.intake@usda.gov

This institution is an equal opportunity provider.

Sharing Information with Other Programs - Optional

Dear Parent/Guardian:

To save you time and effort, the information you gave on your Free and Reduced-Price School Meals Application may be shared with other programs for which your children may qualify.

For the following programs, we must have your permission to share your information. Sending in this form will not change whether your children get free or reduced price meals.

- ☐ Yes! I **DO** want school officials to share information from my Free and Reduced Price School Meals Application with **Bennet Backpack Program**.
- ☐ Yes! I **DO** want school officials to share information from my Free and Reduced Price School Meals Application with **Activities – student fees/misc per Aaron Hoeft**.
- ☐ Yes! I **DO** want school officials to share information from my Free and Reduced Price School Meals Application with **Chromebook fees**.
- ☐ Yes! I **DO** want school officials to share information from my Free and Reduced Price School Meals Application for **Scholarships**

If you checked “yes” to any or all of the boxes above, complete the following form to ensure that your information is shared for the child(ren) listed below. Your information will be shared only with the programs you checked.

Child's Name: _____ School: _____

Child's Name: _____ School: _____

Child's Name: _____ School: _____

Child's Name: _____ School: _____

Signature of Parent/Guardian: _____ Date: _____

Printed Name: _____

Address: _____

For more information, you may call **Jane Powell** at **402-780-5327** or email at **powell.jan@districtor1.net**.

Return this form to: **425 F St, Palmyra, Ne 68418** by **September 9, 2025**

2025-26 Bennet Elementary School Supply List:

All students need a book bag, gym shoes, and headphones

Kindergarten	Must Have Large backpack that will fit a folder and library book 12 Large glue sticks 2 inch, 3-ring binder with clear sleeve on front cover Box of 24 crayons Headphones Gym Shoes (Velcro or slip-on if they do not tie shoes independently)	May Not Bring
First Grade	Must Have 12 large glue sticks Small, plastic pencil box 4 boxes of 24 crayons #2 pencils, 24 total, Ticonderoga brand 4 black fine-tip dry erase markers 4 pink erasers 4 red ball point pens	May Not Bring mechanical pencils pencil sharpeners
Second Grade	Must Have #2 yellow pencils (a package of 12) 12 Crayola Classic Washable markers Box of 8 crayons 2 Spiral wide rule notebook 1 pack of skinny dry erase markers Small plastic crayon box (5.5 x 8 inch) 2 pink erasers	May Not Bring pencil sharpeners mechanical pencils
Third Grade	Must Have #2 pencils Glue sticks (4 small or 2 large) 1 pack of dry erase markers (large or skinny) Box of 24 crayons 2 large erasers 2- Spiral 1 subject notebooks (college ruled) Scissors 1 inch 3 ring binder with clear front	May Not Bring large pencil boxes markers pencil sharpeners mechanical pencils
Fourth Grade	Must Have #2 pencils 1 pkg. wide ruled notebook paper 1 pack of 5 tab dividers for binders 1- 1 inch 3 ring binder with clear front 1- 2 inch 3 ring binder with clear front 1 pkg. of highlighters 1 pkg. of 12 markers 2 large glue sticks Box of 24 crayons Clorox wipes	May Not Bring gel pens/ multicolored toys pencil boxes over 8 x 10 inch
Fifth Grade	Must Have #2 pencils White board eraser Dry erase markers 2 -two pocket folders Colored pencils, box of 12	May Not Bring large pencil boxes multicolored pens toys mechanical pencils

District OR-1 Parent and Coaches/ Sponsors Event:
Proactive Coaching Presentation
Sunday, August 24th at 6:00 p.m. at Palmyra High School
North Main Commons

nebraska coaches association

PROACTIVE COACHING

The NCA & Proactive Coaching partner to bring Coach Bruce Brown's legendary insights about the parent's role in education-based athletics to your school & community.

Book your School's Presentation

Parent Meetings or Special Events

THE ROLE OF PARENTS IN EDUCATION-BASED ATHLETICS

PRESENTED BY DARIN BOYSEN, NCA EXECUTIVE DIRECTOR

"Outstanding information, well delivered. There were times I thought he was talking directly to me, which is a sign of a great communicator. I personally feel I'm better today than yesterday as a sports parent because I was able to listen to this message." – Parent & School Board Member

Before the Season

- What do Athletes/Kids Really Want?
- Releasing Your Son/Daughter to the Experience
- Parental Red Flags

During the Game/Event

- Modeling Appropriate Behavior
- Big Picture
- One Instructional Voice

After the Game/Event

- Time & Space
- Confidence Building
- Relationship Building
- Six Powerful Words

NEBRASKA COACHES ASSOCIATION
500 Charleston St, Ste 2, Lincoln, Nebraska 68508
402-310-5472 | darin@ncacoach.org



Panther Families,

Please help us in growing our Palmyra-Bennet-Douglas TeamMates chapter in the 2025-2026 school year! We are looking for mentors who can meet with a teammate roughly 30 minutes a week. If you or somebody you know would be a great mentor to our youth, let's connect.

Everybody can use another trusted adult in their lives. All students grades 3-12 are eligible for the TeamMates program. If you would like to discuss your student having another positive mentor, please reach out to program coordinator, Austin Lahmon.

Please, also consider serving on the TeamMates Board. This is an outstanding opportunity to give back to your community through TeamMates!

BENNET CLASS LISTS

TO BE POSTED:

Class lists will be posted on the windows of the Bennet Elementary front door and the front doors at Palmyra High School at the end of July.

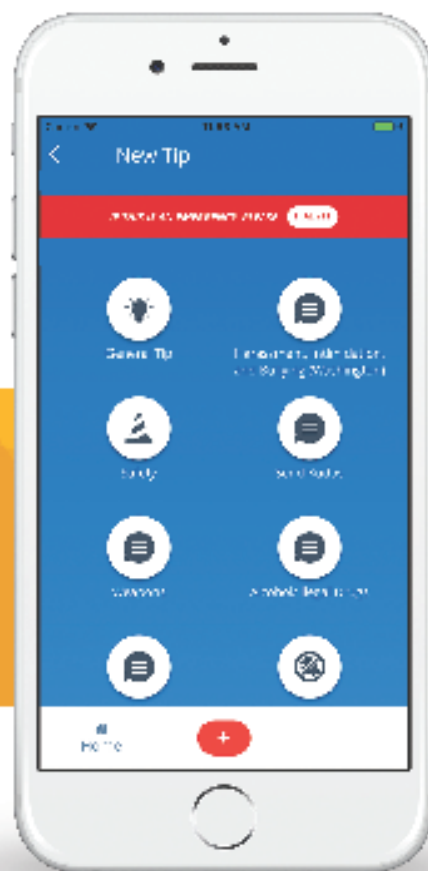


Palmyra District OR-1

Report It

SafeSchools Alert is our district's tip reporting service. If you have information about a threat to our safety, do your part and report it! And remember, you can remain anonymous.

SUBMIT USING OUR APP



FOR EMERGENCIES, PLEASE CALL 911

EASY WAYS TO REPORT



Visit the website
<http://1795.alert1.us>



Email your Tip to
1795@alert1.us



Call to report your tip
402.858.9423



Text your Tip to
402.858.9423

REPORT ON:

- BULLYING
- INTIMIDATION
- HARASSMENT
- WEAPONS
- DRUGS
- OTHER



Our District Code is: 1795

All tips submitted are taken seriously and will be acted upon. Please be responsible with your submissions.

Get Connected!

TEXT MESSAGES:

If you currently receive our Emergency and Weather notifications, you will definitely want to **opt-in** to the text messages that go along with the notifications. Moreover, District OR1 plans to send “text only” messages to further support notices that do not require a fully-launched voice message.

On your phone, send **Y** or **yes** to our short code number 67587



VOICE, E-Mail, & Text:

If you currently do not receive our Emergency and Weather notifications, please call your school secretary and let them know the below information prior to opting-in to text message:

Primary Phone 1	<input type="text"/>
Primary Phone 2	<input type="text"/>
Primary Phone 3	<input type="text"/>
Emergency Phone 1	<input type="text"/>
Emergency Phone 2	<input type="text"/>
Emergency Phone 3	<input type="text"/>
Primary Email 1	<input type="text"/>
Primary Email 2	<input type="text"/>
Emergency Email 1	<input type="text"/>
Emergency Email 2	<input type="text"/>



POWERSCHOOL:

If you currently cannot check your students’ grades on PowerSchool, please call your school secretary and let them know the email address you want to use to log into our PowerSchool Portal. Once you are linked, you can also sign up to pay your students’ food services online.

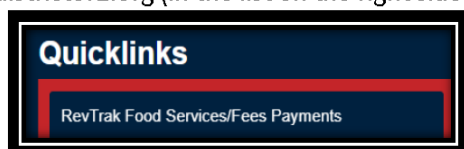


REVTRAK:

If you currently are linked to your student’ grades on PowerSchool, you can create a RevTrak account by going to the following link:

<https://districtor1.revtrak.net/>

This RevTrak link can also be found on districtor1.org (in the list on the right side of the page).



Phone Numbers:

Bennet--402-782-3535 x1

Palmyra—402-780-5327 x2

BOOSTERS BASH 2025

AUGUST 21ST *schedule of events*

HS VOLLEYBALL SCRIMMAGE
4:15PM @ WEST GYM

GATES OPEN
5:30PM @ OLSON SPORTS COMPLEX

- ATHLETIC BOOSTERS MEMBERSHIP SALES
- FINE ARTS BOOSTERS MEMBERSHIP SALES
- SCHOOL ACTIVITY PASSES
- APPAREL & ACTIVITY CALENDAR SALES
- TEAMMATES
- POST PROM COMMITTEE
- FOOD TRUCKS
 - CHICK-FIL-A, RUNZA, & NEXT LEVEL NUTRITION

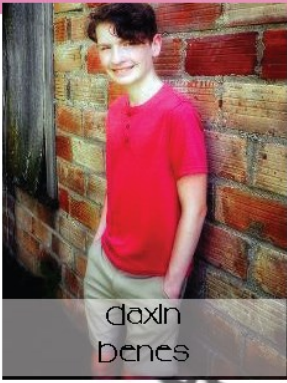
PROGRAM BEGINS
7:00PM @ OLSON SPORTS COMPLEX

- CHOIR, BAND, & CHEER PERFORM
- FALL ACTIVITIES INTRODUCTIONS

MINI CHEER CAMPERS PERFORM
FOLLOWING PROGRAM

**DON'T MISS THE
ACTION – COME OUT
AND SUPPORT YOUR
PANTHERS!**

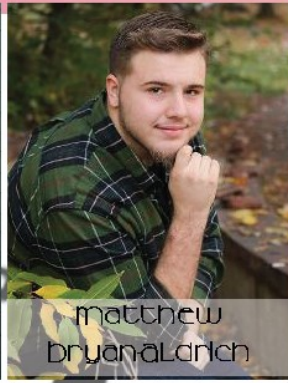
Reminder: NO balls or sports equipment allowed at the complex.
if inclement weather - All activities will move to the high school gym



clavin
benes



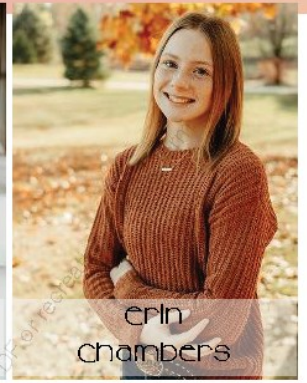
gage
bonaty



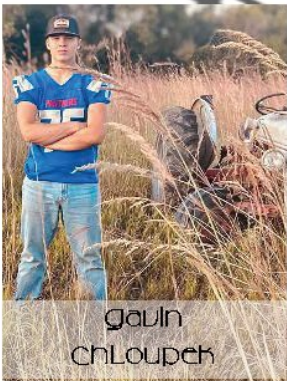
matthew
brynalarich



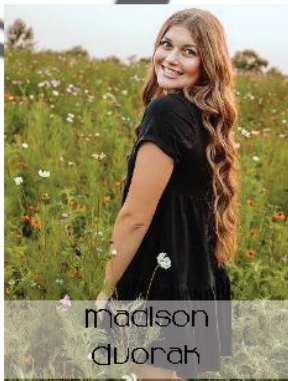
bettie
chambers



erin
chambers



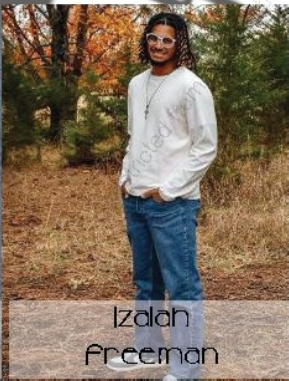
gavin
chloupek



madison
duorak



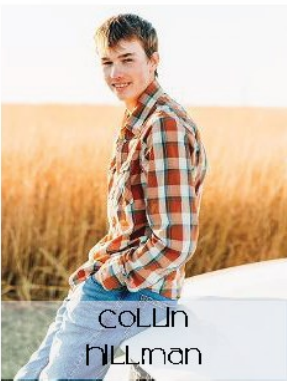
Jayden
fox



izabel
freeman



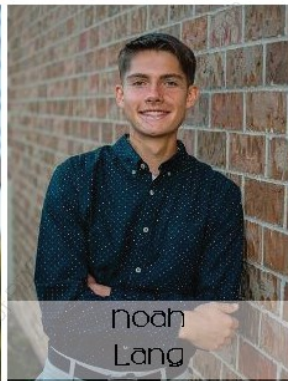
kylie
harig



collin
hillman



leslie
kavan



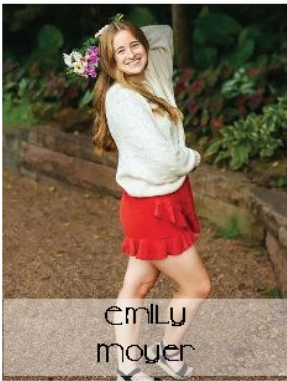
noah
lang



hayden
laschanzky



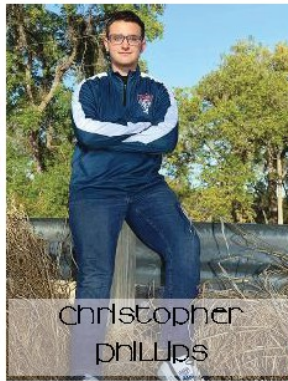
priyanka
malhotra



emily
moyer



wesley
parolek



christopher
phillips



temperance
rugland



mattiLynn
schroeder

Snapshot

of the class of 2025





Jada
Smlat



Jabez
Smith



Katelyn
Smith



Cameron
Steinblock



Brandon
Steinhoff



Alivia
Tenney



Kayley
Thompson



David
Unruh



Travis
Vandervort



Emily
Vandermeter



Addison
Vasa



Haylie
DOLLman



Rylie
Walter



Scarlett
Weltzel



Cayden
Zuhlke



Rylie Walter (left) & Madi Dvorak
(right)



Alivia Tenney (left) & Leslie
Kavan (right)

● ● ●

**FOUNDATION FOR
KNOWLEDGE**
DISTRICT OR-1



Please support the Foundation For Knowledge by dining out at these two restaurants.
A portion of that day's orders go directly to the Foundation.



Tuesday, August 12th
11 am to 9 pm



Tuesday, August 19th
3 pm to 10 pm



District OR-1 Public Schools

2025-2026 School Calendar

Board Approved: January 13th, 2025



August 2025							
Su	M	Tu	W	Th	F	Sa	
					1	2	4-8 Staff Development - No school for students
3	4	5	6	7	8	9	11 Start of Fall Practices
10	11	12	13	14	15	16	11 First Day of School for Students (K-12)
27	18	19	20	21	22	23	12 Preschool First Day of School
24	25	26	27	28	29	30	
31							20 - Teacher days
							15 - Student days

20 staff and 15 student days

September 2025							
Su	M	Tu	W	Th	F	Sa	
	1	2	3	4	5	6	1 Labor Day - No School
7	8	9	10	11	12	13	24 PT Conferences 2-8 pm (1:00 p.m. dismissal)
14	15	16	17	18	19	20	25 PT Conferences: 8 AM -12 PM /Staff Development: p.m.
21	22	23	24	25	26	27	26 No School for Staff or Students
28	29	30					
							20 - Teacher Days
							19 - Student Days

40 staff and 34 student days

October 2025							
Su	M	Tu	W	Th	F	Sa	
			1	2	3	4	8 Bluez Festival: No School for Students/ PD Day for staff
5	6	7	8	9	10	11	10 End of First Quarter
12	13	14	15	16	17	18	13 Start of Second Quarter
19	20	21	22	23	24	25	16 Staff Development - No School for students
26	27	28	29	30	31		17 Fall Break - No School
							22 - Teacher Days
							20 - Student Days

62 staff and 54 student days

November 2025							
Su	M	Tu	W	Th	F	Sa	
						1	17 Start of Winter Practices
2	3	4	5	6	7	8	18 Staff Development - No School for students / ECNC One Act
9	10	11	12	13	14	15	26-28 Thanksgiving Break - No School
16	17	18	19	20	21	22	
23	24	25	26	27	28	29	
30							17 - Teacher Days
							16 - Student Days

79 staff and 70 student days

December 2025							
Su	M	Tu	W	Th	F	Sa	
	1	2	3	4	5	6	19 End of Second Quarter - Early Dismissal 1:00pm
7	8	9	10	11	12	13	22-31 Winter Vacation - No School
14	15	16	17	18	19	20	24-28 Five day moratorium period est. by NSAA
21	22	23	24	25	26	27	
28	29	30	31				15 - Teacher Days
							15 - Student Days

First Semester: 94 Staff and 85 Student Days

January 2026							
Su	M	Tu	W	Th	F	Sa	
				1	2	3	1-5 Winter Vacation - No School
4	5	6	7	8	9	10	5 Staff Development - No School for students
11	12	13	14	15	16	17	6 Start of Second Semester: Students Return
18	19	20	21	22	23	24	19 Martin Luther King Day - No School
25	26	27	28	29	30	31	
							19 - Teacher Days
							18 - Student Days

Second Semester Days: 19 Teacher Days / 18 Student Days

February 2026							
Su	M	Tu	W	Th	F	Sa	
						1	6 1:00 p.m. dismissal for ECNC Wrestling: PHS only
1	2	3	4	5	6	7	11 PT Conferences 2-8 pm (1:00 p.m. dismissal)
8	9	10	11	12	13	14	12 PT Conferences: 8 AM -12 PM /Staff Development: p.m.
15	16	17	18	19	20	21	13-16 No School for Staff or Students
22	23	24	25	26	27	28	
							18 - Teacher Days
							17 - Student Days

Second Semester: 37 Staff and 35 Student Days

March 2026							
Su	M	Tu	W	Th	F	Sa	
							2 Spring Practices Begin
							5 End of Third Quarter
1	2	3	4	5	6	7	6 Spring Break - No School
8	9	10	11	12	13	14	9 Start of Fourth Quarter
15	16	17	18	19	20	21	12 Staff Development - No school for students / MUDECAS Music Host
22	23	24	25	26	27	28	13 No school for Staff or Students
29	30	31					20 - Teacher Days
							19 - Student Days

Second Semester: 57 Staff and 54 Student Days

April 2026							
Su	M	Tu	W	Th	F	Sa	
				1	2	3	2-6 Easter Break - No School
							5 Easter Sunday
5	6	7	8	9	10	11	14 MUDECAS Quiz Bowl : No School for students: PD day
12	13	14	15	16	17	18	
19	20	21	22	23	24	25	
26	27	28	29	30			
							19 - Teacher Days
							18 - Student Days

Second Semester: 76 Staff and 72 Student Days

May 2026							
Su	M	Tu	W	Th	F	Sa	
						1	2
3	4	5	6	7	8	9	9 High School Graduation
10	11	12	13	14	15	16	19 Elementary End of 2nd Semester Reg Dismissal
17	18	19	20	21	22	23	20 End of 2nd Semester: 1:00pm Dismissal for 6-12 / No school K-5
24	25	26	27	28	29	30	21 Last Day for Certified Staff
31							25 Memorial Day
							15 - Teacher Days
							14 - Student Days

Second Semester: 91 Staff and 86 Student Days

June 2026							
Su	M	Tu	W	Th	F	Sa	
	1	2	3	4	5	6	1-4 Summer Enrichment: Week 1
7	8	9	10	11	12	13	6-11 Summer Enrichment: Week 2
14	15	16	17	18	19	20	15-18 Summer Enrichment: Week 3
21	22	23	24	25	26	27	
28	29	30					

July 2026							
Su	M	Tu	W	Th	F	Sa	
			1	2	3	4	5
6	7	8	9	10	11	12	
13	14	15	16	17	18	19	
20	21	22	23	24	25	26	
27	28	29	30	31			

Updated: 1/13/2025

Teacher Days: 185
Student Days: 171

	No School Days for Staff
	Staff Development Day for Staff: No School for Students
	1:00 p.m. Early Dismissal for all students
	Bennet Elementary Last Day of School
	First Day of School for K-12
	First Day of School for Preschool Students
	High School Graduation
	1:00 p.m. dismissal for ECNC Wrestling: PHS only