



# Panther Weekly Bulletin

## Breakfast Menu

<u>Monday</u>	<u>Tuesday</u>	<u>Wednesday</u>	<u>Thursday</u>	<u>Friday</u>
Pancakes Syrup Sausage Links Hard Boiled Egg	Cook's Choice	Waffle Sticks Syrup Sausage Patty Hard Boiled Egg	Wheat Toast Egg Omelet with Cheese Bacon	Cinnamon Roll

## Lunch Menu

<u>Monday</u>	<u>Tuesday</u>	<u>Wednesday</u>	<u>Thursday</u>	<u>Friday</u>
Corn Dog French Fries Carrots	Nacho Chips Taco Meat Cheese Sauce Corn Salsa	Chicken Alfredo Flatbread Pizza Roasted Broccoli	Sloppy Joe Bun Potato Wedges Baked Beans	Hamburger on a Bun Chips

# Happening this week at PHS

**Monday, April 27th -** HS Track @ Conestoga, 9:30 am. Bus leaves at 7:00 am.

Boys Golf vs. Multiple Schools @ Woodland Hills, 2:00 pm.

HS Boys Varsity Baseball vs. Ashland-Greenwood @ Olson Complex, Varsity only at 5:30 pm.

**Tuesday, April 28th-** Quiz Bowl Team Photos- HS Quiz Bowl photo at 7:50 am, JH Quiz Bowl photo at 7:55 am, both in PHS Library.

FCCLA Seniors and Snacks @ PHS West Commons, 10:00 am.

Spring Concert for 9th- 12th grades, PHS West Gym, 6:30 pm.

**Wednesday, April 29th-** Boys Golf vs. Multiple School @ Woodland Hills, 8:30 am.

**Thursday, April 30th-** Unified Track & Field @ Crete, 11:00 am. Van leaves at 9:30 am.

JH Track Invitational @ Johnson County Central, 10:00 am. Bus leaves at 7:30 am.

State Quiz Bowl, 10:30 am.

Fine Arts Awards Night, PHS East Commons, 6:30 pm.

**Friday, May 1st-** HS Boys Baseball vs. Malcolm @ Olson Complex, Varsity at 4:30 pm, JV at 6:30 pm.

**Saturday, May 2nd-** HS Track Varsity ECNC Invitational @ Olson Complex, 9:00 am.

Unified Track ECNC Invitational @ Olson Complex, 10:30 am.

HS Boys Baseball @ Fort Calhoun, Varsity at 11:00 am, JV at 1:00 pm. Bus leaves at 8:30 am.

# UPCOMING EVENTS

**Monday, May 4th**– HS Boys Baseball @ Arlington, Varsity at 4:30 pm, JV at 6:00 pm.

**Tuesday, May 5th**– Varsity Track Invitational @ Freeman, 9:00 am.

**Wednesday, May 6th**– Baccalaureate 7:00 pm.

**Thursday, May 7th**– Boys Golf @ Johnson County Central, 9:00 am.

HS Boys Baseball District Tournament, TBD, Away.

**Friday, May 8th**– Unified Track & Field @ Johnson County Central, 10:00 am.

Varsity Track Invitational @ Johnson County Central, 10:00 am.

JH Track ECNC Invitational @ Auburn, 10:00 am.

HS Boys Baseball District Tournament, TBD, Away.

**Saturday, May 9th**– PHS Senior Graduation, PHS West Gym, 2:00 pm.

HS Boys Baseball District Tournament, TBD, Away.

# GO PANTHERS!

# Bennet Elementary - District OR-1

(402) 782-3535 50 Dogwood St, Bennet, NE 68317 ostrander.mel@districtor1.net



## Newsletter - April 24th, 2026

---

Arrival: 7:50-8:20

Dismissal: 3:20

Early Dismissal Days: 1:00

### Principal's Update

#### **Kindergarten Round-Up Reminder & No School for Current Kindergarteners**

We are excited to welcome our incoming students and families to Kindergarten Round-Up 2026 on Friday, May 1st. It is always a special day as we begin building connections with our newest learners. There will be no kindergarten classes in session on Friday, May 1st due to Kindergarten Round-Up.

We're looking forward to a great day and can't wait to welcome our newest Panthers!

#### **Outstanding Lunch Balances**

As we get closer to the end of the school year, we kindly ask families to take a moment to check and pay any outstanding lunch balances. Clearing accounts before the final days helps us wrap up the year smoothly and avoids any end-of-year surprises. If you need assistance with your child's lunch account or have questions about your balance, please reach out to the school office. We are happy to help.

#### **Lunch Visitors**

We love having families in our building, and you are always welcome at Bennet Elementary! Family members and authorized visitors are invited to join their students for lunch anytime. It's a great opportunity to spend some quality time together and be part of your child's school day. If you would like to visit, all you need to do is check in at the front desk with Melissa. If you have questions about your child's lunch time, please see our lunch schedule below.

#### **Lunch Schedule:**

- Kindergarten: 11:00–11:25
- 1st Grade: 11:15–11:40
- 2nd Grade: 11:30–11:55
- 3rd Grade: 11:45–12:10
- 4th Grade: 12:00–12:25
- 5th Grade: 12:20–12:45



# Bennet Elementary - District OR-1

(402) 782-3535 50 Dogwood St, Bennet, NE 68317 ostrander.mel@districtor1.net  
**Summer Enrichment Program – Registration Open**

Bennet Elementary is excited to offer a Summer Enrichment Program from June 8 through June 25, running Monday through Thursday from 9:00 a.m. to 12:00 p.m.

This program is open to all District OR-1 students **entering** Kindergarten through 5th grade for the 26-27 school year and will include engaging reading, math, and writing activities designed to keep students learning in a fun and relaxed environment.

Cost: \$75

Checks payable to District OR-1, Memo: Summer Enrichment

Families with students on an IEP or participating in the free/reduced lunch program may contact the office for sliding fee options.

Transportation: Shuttle bus service will be available with pickup and drop-off locations in Bennet, Douglas, and Palmyra.

**Registration Deadline: Friday, May 1st**

Please complete the Google Form to register:

[Summer Enrichment Registration Form](#)

We look forward to a great summer of learning and growth.

## **Preschool Open House – May 18**

We invite families to join us for a Preschool Open House on Monday, May 18 from 3:30–5:30 PM at Bennet Elementary.

This is a great opportunity for interested families to visit our program, meet our preschool staff, and connect with district administration. We'll be available to answer questions and share important information to help you feel prepared for the upcoming school year. We look forward to welcoming you and your future learners!

## **Lost and Found Reminder**

Our lost and found is overflowing! We have collected jackets, water bottles, and other items over the past weeks. Please take a moment to stop by by the entryway and see if anything belongs to your child. Don't miss the chance to reunite them with their things!



# Bennet Elementary - District OR-1

(402) 782-3535 50 Dogwood St, Bennet, NE 68317 ostrander.mel@districtor1.net  
**Bus Changes**

Due to limited bus drivers and seating, we are unable to support students riding to a friend's house. Students can be bused home according to their regular route, and we are unable to provide transportation to other locations. We will continue to have daily shuttles from the elementary school and high school. Thank you for understanding.

## **Car Lane Dismissal Process**

To keep our dismissal line safe, smooth, and efficient, please follow the expectations below:

- Continue pulling all the way forward until you reach the front cone or the staff member directing traffic.
- If there is a gap in the car line, please keep moving up. This helps us load more students at the same time and prevents the line from backing up onto the street.
- Only stop directly in front of where your child is waiting **if there is no gap in the lane**. Otherwise, continue pulling forward and your child will walk up to meet you.
- Students will be directed to walk forward to your vehicle, which allows us to load multiple cars simultaneously.
- Once your child is safely in the vehicle, please signal and exit the lane carefully.

Thank you for helping us keep dismissal running safely and efficiently for all families.

## **Dismissal Changes**

Coordinating the dismissal plans for 350 students each day is extremely challenging and time consuming for the office staff. If you have a change request, we ask that these are communicated to the office by 2:00 each day. Ideally, the transportation plan is consistent day to day. We understand that some days a change is needed. However, receiving these requests within an hour of dismissal is a challenge for ensuring timely communication to staff to ensure these students get to where they need to go. Please assist in helping make this process smooth and effective.

## **Arrival Procedures**



# Bennet Elementary - District OR-1

(402) 782-3535 50 Dogwood St, Bennet, NE 68317 ostrander.mel@districtor1.net

Students in the Rec Program may be dropped off starting at 7:00. All other students should arrive no earlier than 7:50 unless they are riding the bus or attending the Rec Program. The front doors will open at 7:50, and staff will begin monitoring the drop-off line at that time. Students dropped off before 7:50 will be unsupervised and the doors will be locked. Breakfast will be served from 7:50 to 8:20 daily. During arrival, students will gather in the Bennet Commons until 8:20 and then be escorted to classrooms. The school day starts at 8:20, and the tardy bell rings at 8:25.

If you are dropping a student off to ride the morning bus shuttles to PHS and have elementary students with them, we cannot provide supervision for students prior to 7:30. Please have students wait in the car until this time as the buses do not arrive until 7:30.

## Parent Drop Off and Pickup Procedures

A few reminders that I would like to share to help everyone get in and out quickly:

- Please have students enter and exit your vehicle on the passenger side of your vehicle. The drop off lane is extremely effective and the safety of your student is our top priority. By doing this, we can ensure that students are not in zones of traffic and are not in harm's way.
- If you are using the parent drop/pick up lanes, please stay in your vehicles. If you would like to park and walk up, please utilize the parking spaces in the interior of the parent pickup/dropoff lane.
- In the afternoon **only**, Kindergarten parents may utilize the bus drop off lane for pickup for Kindergarten students and older siblings. Grades 1-5 will continue to use the primary pickup/dropoff lane. Teachers have now been assigned zones to help aid in the location of your students to help you get in and out quickly.

## Upcoming Events

- April 29th- 5th Grade Transition Day at PHS
- May 1st- Kindergarten Roundup (No School for Current Kindergarteners)
- May 7th- 4th Grade Field Trip (Maibaum)
- May 11th- 4th Grade Field Trip (Dowding)
- May 12th- 4th Grade Field Trip (Sullivan)
- May 13th- Last Day for PreK
- May 13th- Fifth Grade Field Trip
- May 15th- K-5 Track and Field Day @ Olson Complex- 9-2
- May 18th- Fifth Grade Graduation @ PHS West Gym- 1:30-2:30
- May 18th- PreK Open House- 3:30-5:30
- May 19th- Last Day of School K-5
- June 8th-25th- Summer Enrichment

# Bennet Elementary - District OR-1

(402) 782-3535    50 Dogwood St, Bennet, NE 68317    ostrander.mel@districtor1.net



## **PowerSchool**

Please check PowerSchool to view grades, missing assignments, and lunch balances. If you need to set up your account, please call Melissa in the office.

## **District Calendar**

[25-26 District Calendar](#)

[26-27 District Calendar](#)

## **Transportation**

If you have any questions regarding busing, please contact Cathy Fick at 402-540-2879.

## **School Directory**

The Bennet Boosters have compiled a [school directory](#) for families.

# Bennet Elementary - District OR-1

(402) 782-3535 50 Dogwood St, Bennet, NE 68317 ostrander.mel@districtor1.net



## ● Panther Paw Winners ●



SAFE  
RESPECTFUL  
RESPONSIBLE

# Bennet Elementary - District OR-1

(402) 782-3535

50 Dogwood St, Bennet, NE 68317

ostrander.mel@districtor1.net



04.24.2026

## School Counseling PROGRAM

### What's Happening in the Classroom?

This week, Kindergarten students learned more about their transition to first grade. They reviewed strategies to help them be brave and talked about being confident, just as they are confident in themselves in Kindergarten.

1<sup>st</sup> grade students continued working on problem solving skills. Together, we practiced identifying what to say when various problems arise. They learned about how having a calm voice, using kind words, and using non-blaming words is a great recipe for solving problems.

### Focus for the School Year

- Resilience
- Kindness
- Respect
- Emotional Regulation

### Strategy/Skill to reinforce at home

**Self Confidence**  
Loving yourself and believing in your own abilities

### Student Council Update

Fifth grade student council members took the opportunity today to partner with MWL and the City of Bennet to complete a community service project helping to beautify Whispering Pines Park. Students were able to help mulch around all of the trees, pick up trash, etc. to get a sense of the pride one feels when they take care of the community they live in.

Photos can be seen below!



# Bennet Elementary - District OR-1

(402) 782-3535 50 Dogwood St, Bennet, NE 68317 ostrander.mel@districtor1.net

# School Counseling PROGRAM



Austin Lahmon | School Counselor | lahmon.aus@districtor1.net

# Bennet Elementary - District OR-1

(402) 782-3535

50 Dogwood St, Bennet, NE 68317

[ostrander.mel@districtor1.net](mailto:ostrander.mel@districtor1.net)



# School Counseling

## PROGRAM



# Bennet Elementary - District OR-1

(402) 782-3535 50 Dogwood St, Bennet, NE 68317 ostrander.mel@districtor1.net



**CHAMPIONS**

## WE'RE YOUR ONE-STOP SHOP FOR LEARNING AND FUN.

### Bennet Elementary



Safe and sound environments



Talented and nurturing teachers



STEM skills galore



Laughter and friends



Independent and curious



Inside (and outside!) play



Help with homework



Snacks included!

Our before-and-after school programs start when school stops so your child can extend their education in a new way every day.

**SPACE IS LIMITED...ENROLL TODAY!**

Programs	Hours	Weekly Tuition
		Part Time 1-2 days   Full Time 3-5 days
Before School	6:30am - School Start	\$30.00   \$45.00
After School	School Dismissal - 6:00pm	\$40.00   \$65.00

Enroll Here!



Area Manager: Jessica Shafer-Coburn

Phone: (682) 371-8864

Email: [jessica.shafer@discoverchampions.com](mailto:jessica.shafer@discoverchampions.com)

Call or email us for more information, or to schedule a tour today.

# Bennet Elementary - District OR-1

(402) 782-3535 50 Dogwood St, Bennet, NE 68317 ostrander.mel@districtor1.net



**CHAMPIONS**

## HOW TO ENROLL

Follow these steps to register your family and enroll in a Champions® program. This can only be done on the website, not in the app.

- Register once per location if your child attends more than one school.
- If you want to enroll in a program at a different school, make sure to use the same email so we can link accounts. Enroll at Multiple Locations.
- Complete registration steps for each child.!

### STEP-BY-STEP INSTRUCTIONS:

1. Go to [my.discoverchampions.com](https://my.discoverchampions.com).
2. Search by Zip Code or choose your location, then click "Enroll."
3. Enter your child's information. Click "Continue."
4. Fill in parent/guardian information. Select the Primary Caregiver. Click "Continue."
5. Add at least three contacts: Family Member, Authorized Pick-up, and Emergency. Click "Continue."
6. Choose your program, select attendance days, and pick your Monday start date. Click "Continue."
7. To add any discounts, click "+Add Discount," select Coupon Code or Subsidy from the drop-down options, and then enter eligibility information or coupon code.
8. Review your order and click "Continue."
9. Click "Pay Now," enter payment info, and confirm.
10. Check your email for confirmation. Follow the link to set your password, and finish setting up your account.

### WELCOME TO CHAMPIONS!



**Questions?** Email us at [ChampionsHelp@KC-Education.com](mailto:ChampionsHelp@KC-Education.com) or call 1-800-246-2154. Champions Family Support is open Monday through Friday, from 6:00 a.m. to 5:00 p.m. PST.

# Bennet Elementary - District OR-1

(402) 782-3535 50 Dogwood St, Bennet, NE 68317 ostrander.mel@districtor1.net



**JULY 14-16 & 20-23**

**HS CAMP**

8:30-11:00 am  
OLSON FIELD

**JULY 27-29TH**

**JH CAMP**

7:00-8:30 pm  
OLSON FIELD

**JULY 27-29TH**

**YOUTH CAMP**

5:30-6:30pm  
ENTERING 3RD THROUGH 6TH GRADE  
OLSON FIELD

INTERESTED OR HAVE  
QUESTIONS?

CONTACT COACH BAUMERT  
BAUMERT.TAY@DISTRICTOR1.NET  
CAMP FLYERS WILL BE SENT  
HOME SOON!



# Bennet Elementary - District OR-1

(402) 782-3535

50 Dogwood St, Bennet, NE 68317

ostrander.mel@districtor1.net



# PANTHER YOUTH FOOTBALL CAMP



**GRADES 1-6**  
(ENTERING FALL 2026)

GRADES 5 & 6 | 8:00 - 10:00 AM

GRADES 3 & 4 | 10:00 - 12:00 PM

GRADES 1 & 2 | 12:00 - 1:30 PM

**JUNE  
4 & 5  
2026**

**REGISTRATION \$45**

**OPEN TO BOTH BOYS AND GIRLS!**

**ONLINE REGISTRATION :**

<https://panther-youth-football.sportngin.com/register/form/542220279>

**LIVE AT :**  
**OLSON COMPLEX**  
1100 G STREET - PALMYRA, NE



# Bennet Elementary - District OR-1

(402) 782-3535 50 Dogwood St, Bennet, NE 68317 ostrander.mel@districtor1.net



## PANTHER YOUTH VOLLEYBALL CLUB FALL 2026 SIGN-UPS

**MAY 1<sup>ST</sup> - MAY 31<sup>ST</sup>**

### 1<sup>st</sup> grade

**\$30** 4 weeks, skills/practice; includes t-shirt

### 2<sup>nd</sup> grade

**\$40** 5 weeks, skills/practice, includes t-shirt

### 3<sup>rd</sup> and 4<sup>th</sup> grades

can choose one or both of the following:

**\$40** 4v4 play (Saturday's starting in August)

**\$120** includes 5 tournaments; includes jersey

### 5<sup>th</sup> and 6<sup>th</sup> grades

can choose one or both of the following:

**\$40** 4v4 play (Saturday's starting in August)

**\$130** includes 6 tournaments; includes jersey

### Notes:

4v4 play will be August 15, 22, 29 and September 5

Warm-ups will be an additional cost

### Register at:

<https://leagues.bluesombrero.com/panthervball>

### Questions? Email:

[pantheryouthvolleyballclub@gmail.com](mailto:pantheryouthvolleyballclub@gmail.com)



# Bennet Elementary - District OR-1

(402) 782-3535    50 Dogwood St, Bennet, NE 68317    ostrander.mel@districtor1.net



## Western Otoe County Food Pantry

Located at Beautiful Savior Lutheran Church  
955 C Street, Palmyra, Nebraska  
Enter at the dedicated north entrance

*Neighbors Serving Neighbors:  
Many Hands Lighten the Load*

- Confidential help when you need it
- Select your own items
- Private visits by appointment only
- No Paperwork

Supported locally by the Bennet Community Church,  
Palmyra community churches (Catholic, Lutheran,  
Presbyterian), and Douglas Catholic church.

### **For more information or an appointment contact:**

All seasons:

Brooke Hay	402/992-0130
Diana Poskochil	402/580-1234
Molly Hall	402/560-2229
Melissa Carpenter	402/817-3958

Times other than winter:

Sheila Lienau	402/499-3865
Charlie Lienau	402/429-8918



# Bennet Elementary - District OR-1

(402) 782-3535 50 Dogwood St, Bennet, NE 68317 ostrander.mel@districtor1.net

## Standard Response Protocol

Bennet Elementary’s adoption of the Standard Response Protocol (SRP) provides a standardized approach to managing various events, both threatening and non-threatening, that may happen in or around our school.

These protocols provide actions for the following situations:

- Hold (stay in classrooms due to a non-threatening event)
- Secure (danger is outside the school)
- Lockdown (danger is inside the school)
- Evacuate (leave the school building, often referred to as fire drill)
- Shelter (tornado or severe weather)

# IN AN EMERGENCY TAKE ACTION



## **HOLD! In your room or area. Clear the halls.**

### **STUDENTS**

Clear the hallways and remain in room or area until the “All Clear” is announced  
Do business as usual

### **ADULTS**

Close and lock the door  
Account for students and adults  
Do business as usual



## **SECURE! Get inside. Lock outside doors.**

### **STUDENTS**

Return to inside of building  
Do business as usual

### **TEACHERS**

Bring everyone indoors  
Lock outside doors  
Increase situational awareness  
Do business as usual  
Take attendance



## **LOCKDOWN! Locks, lights, out of sight.**

### **STUDENTS**

Move away from sight  
Maintain silence  
Do not open the door

### **ADULTS**

Recover students from hallway if possible  
Lock the classroom door  
Turn out the lights  
Move away from sight  
Maintain silence  
Do not open the door  
Prepare to evade or defend



## **EVACUATE! (A location may be specified)**

### **STUDENTS**

Leave stuff behind if required to  
If possible, bring your phone  
Follow instructions

### **ADULTS**

Lead students to Evacuation location  
Account for students and adults  
Notify if missing, extra or injured students or adults



## **SHELTER! Hazard and safety strategy.**

### **STUDENTS**

Use appropriate safety strategy for the hazard

<b>Hazard</b>	<b>Safety Strategy</b>
Tornado	Evacuate to shelter area
Hazmat	Seal the room
Earthquake	Drop, cover and hold
Tsunami	Get to high ground

### **ADULTS**

Lead safety strategy  
Account for students and adults  
Notify if missing, extra or injured students or adults

# PATHFINDER TRAFFIC SAFETY SERVICE

**Teen Driver Education**

## PROVISIONAL OPERATOR'S PERMIT PROGRAM (POP)

**20 hours hybrid course work:**  
*10 hours online course work*  
*10 hours in the classroom*

**5 hours behind the wheel training  
with an instructor**

### **WHEN:**

**JUNE 9<sup>TH</sup> AND  
JUNE 10<sup>TH</sup>, 2026  
12:00 PM- 5:00  
PM**

### **WHERE:**

**PALMYRA HIGH  
SCHOOL  
425 F ST.  
PALMYRA, NE**

### **TUITION**

**\$425**

### **GO TO:**

**[pathfindertss.org](http://pathfindertss.org)**

### **REGISTER FOR:**

**Palmyra**

**Contact:**

**Liz Cunningham  
402-719-5481 or at  
[pathfindertss@gmail  
.com](mailto:pathfindertss@gmail.com)**

**SHIRTS101.STORE/BP\_LEGIONS\_BASEBALL**

**STORE CLOSES 5/1/26**

**LATE ORDERS CANNOT BE ACCEPTED**

# **BENNET PALMYRA LEGION BASEBALL APPAREL STORE**



**ORDERS AVAILABLE ON OR ABOUT 5/19/26**

TIMELINES ARE APPROXIMATE AND MAY SHIFT. IF DELAYS OCCUR DUE TO PRODUCT AVAILABILITY, YOU WILL BE NOTIFIED AS SOON AS POSSIBLE.

Check your confirmation email to verify order.  
Didn't get one?  
Email [customerservice@shirts101.com](mailto:customerservice@shirts101.com) for help.

produced locally in  
lincoln, nebraska



# Palmyra Boys Wrestling Camp 2026

For incoming 7th-12<sup>th</sup> graders

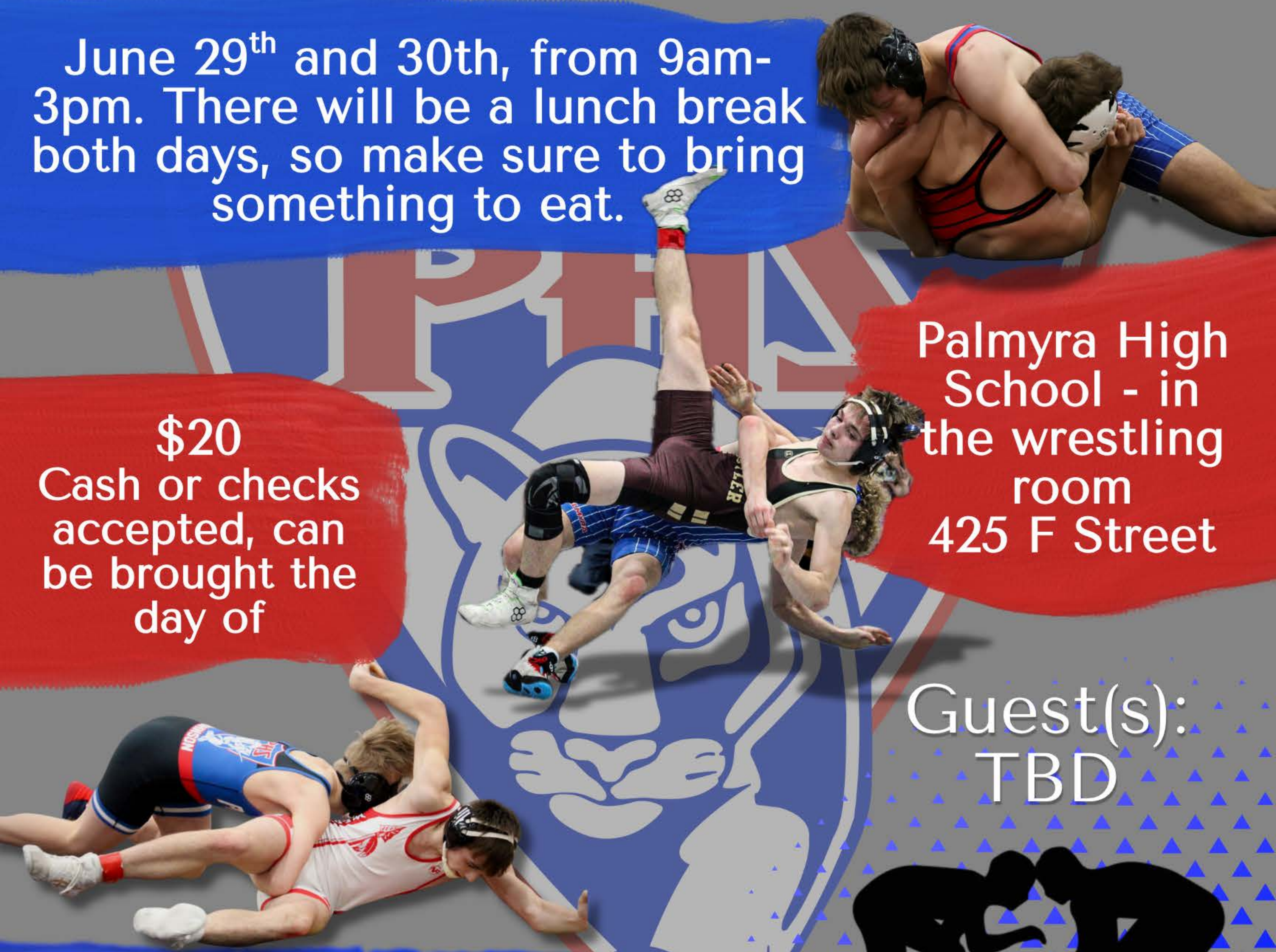
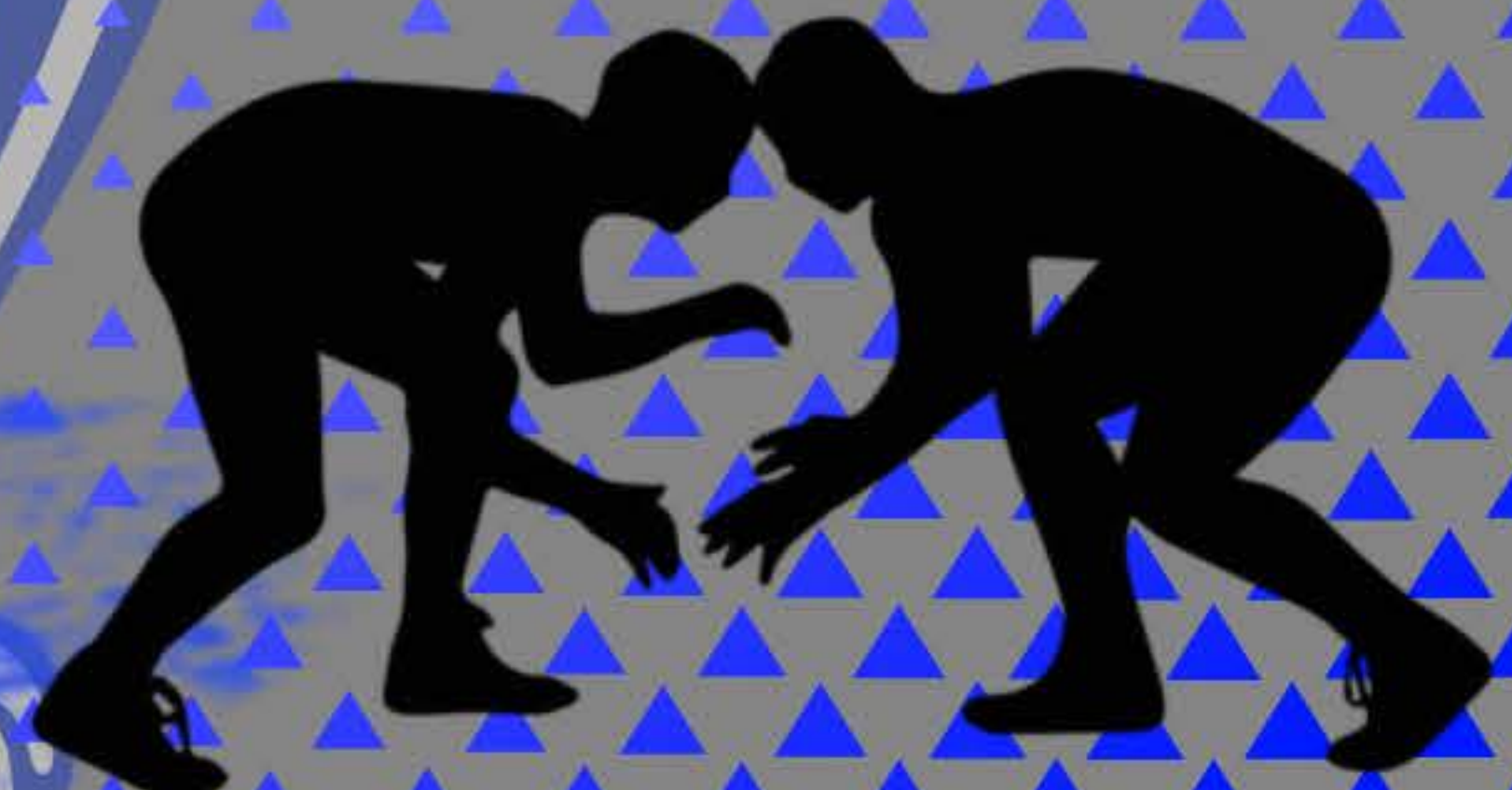
June 29<sup>th</sup> and 30<sup>th</sup>, from 9am-3pm. There will be a lunch break both days, so make sure to bring something to eat.

\$20  
Cash or checks accepted, can be brought the day of

Palmyra High School - in the wrestling room  
425 F Street

Guest(s):  
TBD

If you are interested or have any questions, contact Coach Weils at [weils.and@districtor1.net](mailto:weils.and@districtor1.net) by May 15th





# SUMMER WEIGHTS SIGN UP

**START DATE: JUNE 1**

**4 DAYS/ WEEK  
(MONDAY- THURSDAY)**

**7:00 - 8:15 HIGH SCHOOL BOYS (GRADES 11/12)**

**7:45 - 9:00 HIGH SCHOOL BOYS (GRADES 9/10)**

**8:30 - 9:45 HIGH SCHOOL GIRLS**

**9:45 - 10:30 JUNIOR HIGH (BOYS M/W & GIRLS T/TH)**

*Athletes planning to attend summer weights will need to fill out the sign up form below!*

**SIGN-UP  
FORM:**



**BAND APP  
CALENDAR  
AND  
UPDATES**