



# Panther Weekly Bulletin

## Breakfast Menu

<u>Monday</u>	<u>Tuesday</u>	<u>Wednesday</u>	<u>Thursday</u>	<u>Friday</u>
<b>Pancakes</b> <b>Bacon</b> <b>Yogurt</b>	<b>Muffin</b> <b>Yogurt</b>	<b>NO SCHOOL</b>	<b>Bacon, Egg &amp; Cheese Biscuit</b> <b>Yogurt</b>	<b>Long John</b> <b>Yogurt</b>

## Lunch Menu

<u>Monday</u>	<u>Tuesday</u>	<u>Wednesday</u>	<u>Thursday</u>	<u>Friday</u>
<b>Quesadilla</b> <b>Black Beans</b> <b>Corn</b>	<b>Lasagna</b> <b>Cheese Stuffed</b> <b>Breadsticks</b> <b>Green Beans</b>	<b>NO SCHOOL</b>	<b>Breaded Pork</b> <b>Patty/Bun</b> <b>Mac &amp; Cheese</b> <b>Broccoli</b>	<b>Mini Corn Dogs</b> <b>Long Grain &amp; Wild Rice</b> <b>Peas</b>

# Happening this week at PHS

**Monday, September 23rd**– FFA Land Judging Practice 7:15 am, JH Football @ Milford 4:30 pm Bus leaves @ 2:30 pm, C-Team/JV Volleyball vs. Elmwood Murdock @ PHS 5:30 pm **Streaming on HUDL**, Cross Country Practice 3:45-5:20 pm

**Tuesday, September 24th**– Early Dismissal 1:00 pm, Parent/Teachers Conferences 2:00-8:00 pm, Golf @ River wilds 9:00 am Van leaves @ 6:30am, Cross Country @ Branched Oak 10:00 am Bus leaves @ 7:30 am, One Act Rehearsal 3:00-5:00 pm, Senior Steps to College Presentation HS Library 5:15 pm

**Wednesday, September 25th**– NO SCHOOL Teachers In-Service, FCCLA Fall Leadership Workshop East Campus Van leaves @ 8:00 am, Cross Country Practice 3:45-5:20 pm

**Thursday, September 26th**– Golf @ Pioneers Park 4:00 pm Van leaves @ 2:45 pm, JH Volleyball vs. Auburn @ PHS 4:00 pm East Gym, HS Volleyball Vs. Auburn @ PHS West Gym 4:30/5:30/6:30 pm, Cross Country Practice 3:45-5:45 pm

**Friday, September 27th**– Show Choir 6:45 am, HS Quiz Bowl 7:30 am, HS Football @ Bishop Neumann 7:00 pm Bus leaves @ 4:00 pm, FFA @ Murdock 1:00 pm Bus leaves @ 12:30 pm, Cross Country Practice 3:45-5:45 pm

**Saturday, September 28th**– Waverly Parade & Field Marching Festival @ Waverly Bus leaves @ 8:15 am, HS Volleyball Quad @ Wilber-Clatonia 10:00 am Bus leaves @ 8:00 am



# UPCOMING EVENTS

**Monday, September 30th– Golf @ Grandpa's Woods, Cross Country @ Kearney, JH Football @ Olson Complex, JV Football @ Olson Complex, C-Team & JV Volleyball @ Nebraska City**

**Tuesday, October 1st– HS Volleyball @ Elmwood Murdock**

**Wednesday, October 2nd– Show Choir 6:45 am, FFA Land Judging, S.A.I.L. Conference, Open House @ Bennet Elementary 5:00-6:30 pm See attached flyer**

**Thursday, October 3rd– Golf vs. Lincoln Christian, Cross Country @ Raymond Central, HS Volleyball @ Freeman**

**Friday, October 4th– Show Choir 6:45 am, HS Quiz Bowl 7:30 am, HS Football vs. Raymond Central @ Olson Complex, Open House @ PHS 5:00-6:30 pm See attached flyer**

**Saturday, October 5th– JV Volleyball @ Syracuse, JH Volleyball @ Lincoln Christian, Homecoming Dance**

# GO PANTHERS!

# Bennet Elementary - District OR-1

(402) 782-3535

50 Dogwood St, Bennet, NE 68317



## Newsletter - September 20th, 2024

---

Arrival 7:55-8:25

Dismissal 3:20

Early Dismissal Days 1:00

### Principal's Update

Bennet Elementary Families,

Next week will be an alternate schedule for District OR-1 students and families. On Tuesday, September 24th, we will be dismissing students at 1:00 and will begin parent teacher conferences at 2:00. Wednesday, September 25th will be a no school day for students due to staff development for teachers. Thursday and Friday will be normal school days for K-12 students. We appreciate your flexibility as we work to provide opportunities for families to gain feedback and progress updates from teachers.

Whether your child is a bus rider on a daily basis or only rides for special events and field trips, I wanted to remind parents of our bus expectations for students. We do not allow food or beverages to be consumed on the bus. We expect students to remain seated and facing forward during the entire bus ride. We also ask that student Chromebooks are put away in their backpacks and are not in use during the duration of the bus ride.

Sincerely,

Jared Haag  
Bennet Elementary Principal

### Upcoming Events

- **Sep. 24th\* - Early Dismissal 1:00**
- **Sep. 24th - Parent Teacher Conferences 2-8 p.m.**
- **Sep. 25th\* - No School (Staff Development)**
- Sep. 30th - Homecoming Week (Dress Up Days TBA)
- Oct. 2nd - Bennet Elementary Community Open House- 5-6:30
- Oct. 8th- Bennet Boosters Meeting- 7:00 at Bennet Elementary
- Oct. 17th, 18th, 21st- No School (Fall Break)



# Bennet Elementary - District OR-1

(402) 782-3535

50 Dogwood St, Bennet, NE 68317



## ● Panther Paw Winners ●



SAFE  
RESPECTFUL  
RESPONSIBLE

# Bennet Elementary - District OR-1

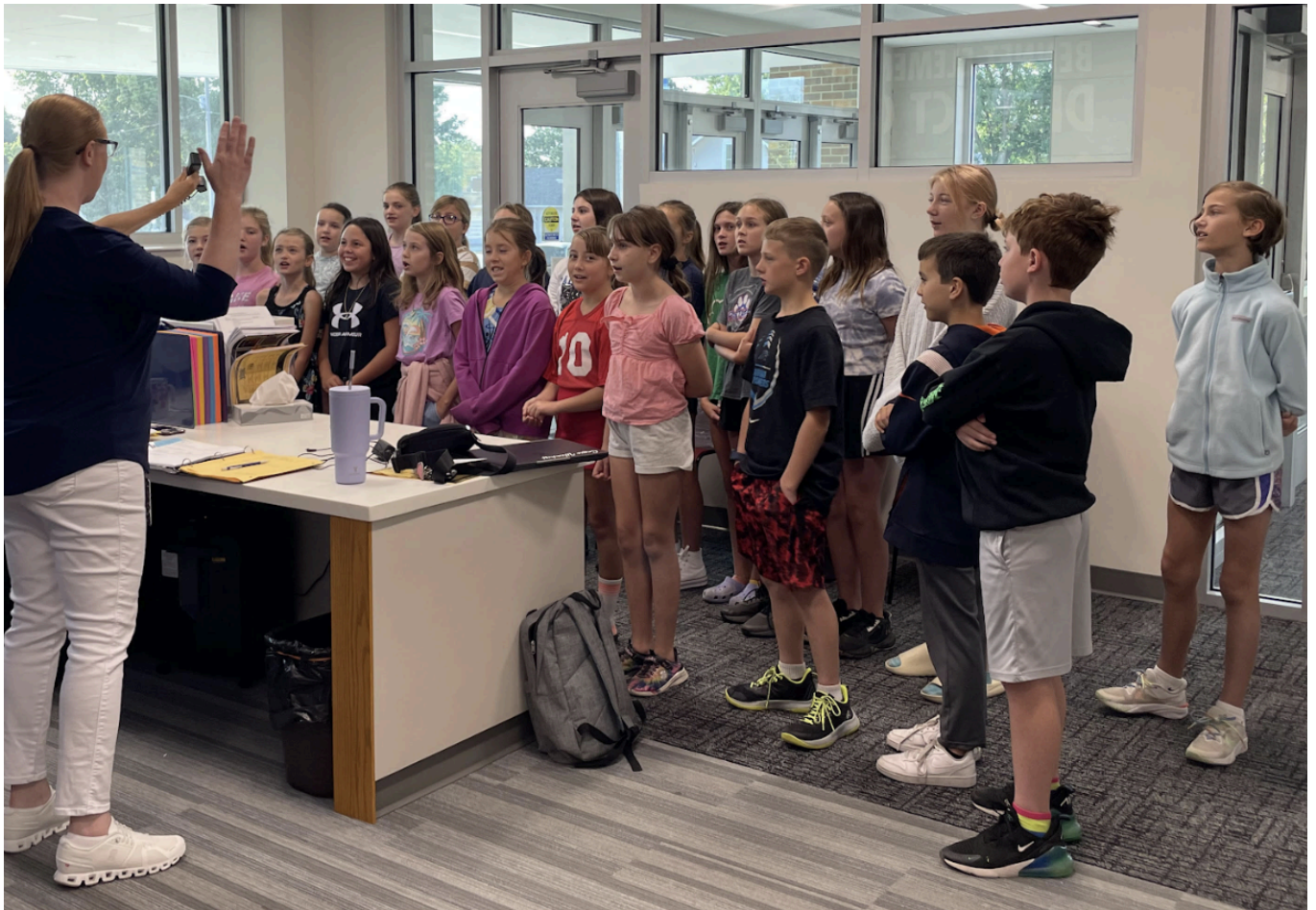
(402) 782-3535

50 Dogwood St, Bennet, NE 68317



## Bennet Singers Patriot's Day Performance

On September 11th, we were treated to a special performance from the Bennet Singers led by Mrs. McCreight. They have been practicing the national anthem and we were fortunate enough to hear them perform over the intercom for Patriots Day for all students. They did a fantastic job!!!





# Bennet Elementary - District OR-1

(402) 782-3535

50 Dogwood St, Bennet, NE 68317



## Standard Response Protocol

Bennet Elementary's adoption of the Standard Response Protocol (SRP) provides a standardized approach to managing various events, both threatening and non-threatening, that may happen in or around our school.

These protocols provide actions for the following situations:

- Lockout (danger is outside the school)
- Lockdown (danger is inside the school)
- Evacuate (leave the school building, such as a fire)
- Shelter (tornado or severe weather)
- Hold (stay in classrooms due to a non-threatening event outside the classroom)

## IN AN EMERGENCY TAKE ACTION



### **HOLD! In your room or area. Clear the halls.**

#### **OCCUPANTS**

Clear the hallways and remain in room or area until the "All Clear" is announced  
Do business as usual

#### **STAFF**

Close and lock door  
Account for occupants and staff  
Do business as usual



### **SECURE! Get inside. Lock outside doors.**

#### **OCCUPANTS**

Return inside  
Do business as usual

#### **STAFF**

Bring everyone indoors  
Lock outside doors  
Increase situational awareness  
Account for occupants and staff  
Do business as usual



### **LOCKDOWN! Locks, lights, out of sight.**

#### **OCCUPANTS**

Move away from sight  
Maintain silence  
Do not open the door  
Prepare to evade or defend

#### **STAFF**

Lock interior doors  
Turn out the lights  
Move away from sight  
Do not open the door  
Maintain silence  
Account for occupants and staff  
Prepare to evade or defend



### **EVACUATE! (A location may be specified)**

#### **OCCUPANTS**

Evacuate to specified location  
Bring your phone  
Instructions may be provided about retaining or leaving belongings

#### **STAFF**

Lead evacuation to specified location  
Account for occupants and staff  
Notify if missing, extra or injured people



### **SHELTER! Hazard and safety strategy.**

#### **OCCUPANTS**

Use appropriate safety strategy for the hazard

#### **Hazard**

Tornado  
Hazmat  
Earthquake  
Tsunami

#### **Safety Strategy**

Evacuate to shelter area  
Seal the room  
Drop, cover and hold  
Get to high ground

#### **STAFF**

Lead safety strategy  
Account for occupants and staff  
Notify if missing, extra or injured people



# Bennet Elementary - District OR-1

(402) 782-3535

50 Dogwood St, Bennet, NE 68317



## Announcements

### Arrival and Dismissal Procedures

A few reminders that I would like to share to help everyone get in and out quickly:

- Please have students enter and exit your vehicle on the passenger side of your vehicle. The drop off lane is extremely effective and the safety of your student is our priority. By doing this, we can ensure that students are not in zones of traffic and are not in harm's way.
- If you are using the parent drop/pick up lanes, please stay in your vehicles. If you would like to park and walk up, please utilize the parking spaces in the interior of the parent pickup/dropoff lane.
- In the afternoon **only**, Kindergarten parents may utilize the bus drop off lane for pickup for Kindergarten students and older siblings. Grades 1-5 will continue to use the primary pickup/dropoff lane. Teachers have now been assigned zones to help aid in the location of your students to help you get in and out quickly.
- For preschool students, we have begun a student drop-off zone similar to the primary drop-off lane. If you would like to stay in your vehicle, a staff member will assist with getting your student out of the vehicle.

### Arrival Times

Students that are participating in the Rec program can be dropped off starting at 7:00. All other students can arrive no earlier than 7:50 unless they are utilizing school bussing or the Rec Program. School starts at 8:20 and the tardy bell rings at 8:30. Breakfast begins at 7:50 and ends at 8:20.

### PowerSchool

Please check PowerSchool to view grades, missing assignments, and lunch balances. If you need to set up your account, please call Kristi in the office.

### District Calendar

[24-25 District Calendar](#)

### Transportation:

If you have any questions regarding bussing, please contact Cathy Fick at 402-540-2879.

*Come see what we've been up to!*



# COMMUNITY OPEN HOUSE

**Bennet Elementary**

Wednesday, October 2  
5:00pm-6:30pm

**Palmyra High School**

Friday, October 4  
5:00pm-6:30pm



*After you check out the updates at Palmyra High School, be sure to head over to support your panthers at the Homecoming Football Game!*

*Beverages courtesy of*



**Ziggi's COFFEE®**



**Smashberry**

*strawberry, blue raspberry,  
Ziggi's Energy*



**Limelight**

*blue raspberry, lime,  
Ziggi's Energy*



**Daily Brew**

*All donations will go towards the junior and senior prom.*



### 2331/ \$18 **Steak Strips**

A high protein, easy to bite snack made with 100% beef. Seasoned with a special blend of black pepper and teriyaki, then slow smoked with hardwoods to produce a deliciously satisfying result. Net Wt. 5 oz



### 2329 / \$19 **Jalapeño Pepper Jack Summer Sausage**

Summer sausage that showcases meat, cheese, and spice all at once while leaving you with a traditional summer sausage feel. Net Wt. 16 oz.



# APPETITE DELIGHTS

*from Nature's Pantry*



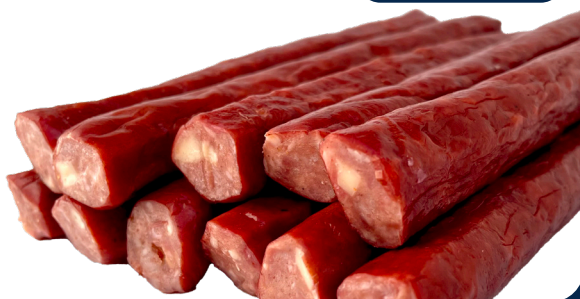
Shop online at  
[shop.4sns.com](http://shop.4sns.com)



### 2332/ \$18 **GF**

#### **Pepper Jack Cheese Snack Sticks**

Hickory-smoked snack stick with bits of spicy pepper cheese throughout. Net Wt. 11 oz.



### 2301 / \$33 **Appetite Delight**

Contains two 5 oz. links of summer sausage and 8 oz. sticks of Colby and Co-jack cheese, 4 oz. of Cheddar and a 4 oz. tub of smoky bacon cheese spread. Net Wt. 34 oz.



### 2327 / \$26 **Snack n' Go Pack**

Individually wrapped string cheese and 11 oz. package of our famous snack sticks. Net Wt. 22 oz.



### **GF** 2300 / \$23 **Three's Company**

8 oz. sticks of both Colby and Co-jack cheese and 5 oz. summer sausage. Net Wt. 21 oz.



**4 Season's Top Sellers:** Our Top Sellers are products that have proven to remain best sellers year after year. Look for this gold star for our Top Sellers.

**GF** = Gluten Free Item





SHOP  
ONLINE  
**24/7**  
4sns.com

2325 / \$18

## Sweet Teriyaki Snack Sticks

A Sweet Asian twist on our favorite smoked Snack Sticks. This single layer is perfect for snacking! Net Wt. 11oz.



Sweet Teriyaki Snack Sticks

2306 / \$16

## 12 oz. Summer Sausage

Select cuts blended for a convenient snack you'll be pleased to serve. Hickory smoked! Ⓞ

2309 / \$27

## 2 lb. Summer Sausage

Enough for a game-day crowd; an appreciated, "usable" gift for employees or customers. Ⓞ

2307 / \$25

## Snack Sticks

Tasty beef/pork sticks that make for an easy & nutritious treat. A favorite with the youngsters. Net Wt. 22 oz. Ⓞ

TOP  
SELLER

2319 / \$19

## Smokehouse Variety Pack

12 Individually wrapped 1 oz. snack sticks. 3 Teriyaki, 3 Original, 3 BBQ and 3 Jalapeño snack sticks. Perfect for the next picnic or mid-day snack. Net Wt. 12 oz.

TOP  
SELLER



2322 / \$15 Ⓞ

## Cherry Maple Elk Bites

Lean elk jerky bites infused with maple and cherry flavors. The most tender and tasteful snack around! 3.2 oz. package.

Shop online at [shop.4sns.com](http://shop.4sns.com)



View brochure from your phone ►





# Cold Pack Cheese Spreads

An appetizer staple! Blended with aged Wisconsin Natural Cheddar, cream and herbs/spices creating crowd pleasing flavors. Cold pack cheese is not heated during processing to retain its true flavor - remaining as similar as possible to natural cuts of cheese, but with the advantage of being conveniently spreadable.



**BIG**  
16 OZ. CUPS



2315 / \$14  
**Garden Vegetable**  
Enjoy your favorite garden vegetables with an extra creamy kick.  
Net Wt. 16 oz.

2314 / \$14  
**Horseradish Cheddar**  
Like horseradish? You'll love this!  
Net Wt. 16 oz.

2308 / \$14  
**Pepper Jack**  
Monterey Jack blended with mild jalapeño peppers and red pepper flakes.  
Net Wt. 16 oz.

2313 / \$14  
**Sharp Cheddar**  
Taste tantalizing Sharp Cheddar Cheese.  
Wisconsin's best.  
Net Wt. 16 oz.

2311 / \$14  
**Jalapeno Cheddar**  
Spicy but not too hot. Great "south of the border" taste.  
Net Wt. 16 oz.

2312 / \$14  
**Bacon Cheddar**  
Fine cheddar, carefully blended with bacon.  
Net Wt. 16 oz.



## 2330 / \$15 Premium Peppered Beef Jerky

A whole muscle meat seasoned with cracked black pepper, can help you power through every day with a little extra kick. Net Wt. 3.2 oz.



2305 / \$15  
**Fiesta Trio Soup**  
Simmer in minutes for restaurant-quality flavor at home. Includes one single recipe size dry mix packet of each: Chicken Enchilada Soup Mix – 1.9 oz., Tortilla Soup Mix – 1.96 oz., and Taco Soup Mix – 1.37 oz. Each packet serves 6-8. Total Net Wt. 5.2 oz.



**Natural vs. Processed Cheese:** Natural cheese is a cheese that is made directly from milk. Processed cheese is a mass produced product made of one or more types of cheese that have been heated and mixed with emulsifiers, colorings, flavorings, etc., primarily to retard spoilage and enhance spreadability at a reduced cost. In order to provide the highest quality products to our customers, 4 Seasons chooses to use only natural cheeses in our gift boxes and cheese cups.

Scan here to see product protein counts and nutrition facts



**4 SEASONS**  
FUND RAISING





View this brochure  
online at [www.4sns.com](http://www.4sns.com)  
Facebook Twitter Instagram  
340 Wright Rd, Suite H Norwalk, IA 50211  
Toll Free: 1-800-525-9335  
Customer, Address, Phone

SAMPLE

Mary Smith, 123 Oak St. 555-5555

--	--	--	--	--	--	--	--	--	--	--	--	--	--	--	--	--	--	--	--	--	--	--	--	--	--	--	--	--	--	--	--	--	--	--	--	--	--	--	--	--	--	--	--	--	--	--	--	--	--	--	--	--	--	--	--	--	--	--	--	--	--	--	--	--	--	--	--	--	--	--	--	--	--	--	--	--	--	--	--	--	--	--	--	--	--	--	--	--	--	--	--	--	--	--	--	--	--	--	--	--	--	--	--	--	--	--	--	--	--	--	--	--	--	--	--	--	--	--	--	--	--	--	--	--	--	--	--	--	--	--	--	--	--	--	--	--	--	--	--	--	--	--	--	--	--	--	--	--	--	--	--	--	--	--	--	--	--	--	--	--	--	--	--	--	--	--	--	--	--	--	--	--	--	--	--	--	--	--	--	--	--	--	--	--	--	--	--	--	--	--	--	--	--	--	--	--	--	--	--	--	--	--	--	--	--	--	--	--	--	--	--	--	--	--	--	--	--	--	--	--	--	--	--	--	--	--	--	--	--	--	--	--	--	--	--	--	--	--	--	--	--	--	--	--	--	--	--	--	--	--	--	--	--	--	--	--	--	--	--	--	--	--	--	--	--	--	--	--	--	--	--	--	--	--	--	--	--	--	--	--	--	--	--	--	--	--	--	--	--	--	--	--	--	--	--	--	--	--	--	--	--	--	--	--	--	--	--	--	--	--	--	--	--	--	--	--	--	--	--	--	--	--	--	--	--	--	--	--	--	--	--	--	--	--	--	--	--	--	--	--	--	--	--	--	--	--	--	--	--	--	--	--	--	--	--	--	--	--	--	--	--	--	--	--	--	--	--	--	--	--	--	--	--	--	--	--	--	--	--	--	--	--	--	--	--	--	--	--	--	--	--	--	--	--	--	--	--	--	--	--	--	--	--	--	--	--	--	--	--	--	--	--	--	--	--	--	--	--	--	--	--	--	--	--	--	--	--	--	--	--	--	--	--	--	--	--	--	--	--	--	--	--	--	--	--	--	--	--	--	--	--	--	--	--	--	--	--	--	--	--	--	--	--	--	--	--	--	--	--	--	--	--	--	--	--	--	--	--	--	--	--	--	--	--	--	--	--	--	--	--	--	--	--	--	--	--	--	--	--	--	--	--	--	--	--	--	--	--	--	--	--	--	--	--	--	--	--	--	--	--	--	--	--	--	--	--	--	--	--	--	--	--	--	--	--	--	--	--	--	--	--	--	--	--	--	--	--	--	--	--	--	--	--	--	--	--	--	--	--	--	--	--	--	--	--	--	--	--	--	--	--	--	--	--	--	--	--	--	--	--	--	--	--	--	--	--	--	--	--	--	--	--	--	--	--	--	--	--	--	--	--	--	--	--	--	--	--	--	--	--	--	--	--	--	--	--	--	--	--	--	--	--	--	--	--	--	--	--	--	--	--	--	--	--	--	--	--	--	--	--	--	--	--	--	--	--	--	--	--	--	--	--	--	--	--	--	--	--	--	--	--	--	--	--	--	--	--	--	--	--	--	--	--	--	--	--	--	--	--	--	--	--	--	--	--	--	--	--	--	--	--	--	--	--	--	--	--	--	--	--	--	--	--	--	--	--	--	--	--	--	--	--	--	--	--	--	--	--	--	--	--	--	--	--	--	--	--	--	--	--	--	--	--	--	--	--	--	--	--	--	--	--	--	--	--	--	--	--	--	--	--	--	--	--	--	--	--	--	--	--	--	--	--	--	--	--	--	--	--	--	--	--	--	--	--	--	--	--	--	--	--	--	--	--	--	--	--	--	--	--	--	--	--	--	--	--	--	--	--	--	--	--	--	--	--	--	--	--	--	--	--	--	--	--	--	--	--	--	--	--	--	--	--	--	--	--	--	--	--	--	--	--	--	--	--	--	--	--	--	--	--	--	--	--	--	--	--	--	--	--	--	--	--	--	--	--	--	--	--	--	--	--	--	--	--	--	--	--	--	--	--	--	--	--	--	--	--	--	--	--	--	--	--	--	--	--	--	--	--	--	--	--	--	--	--	--	--	--	--	--	--	--	--	--	--	--	--	--	--	--	--	--	--	--	--	--	--	--	--	--	--	--	--	--	--	--	--	--	--	--	--	--	--	--	--	--	--	--	--	--	--	--	--	--	--	--	--	--	--	--	--	--	--	--	--	--	--	--	--	--	--	--	--	--	--	--	--	--	--	--	--	--	--	--	--	--	--	--	--	--	--	--	--	--	--	--	--	--	--	--	--	--	--	--	--	--	--	--	--	--	--	--	--	--	--	--	--	--	--	--	--	--	--	--	--	--	--	--	--	--	--	--	--	--	--	--	--	--	--	--	--	--	--	--	--	--	--	--	--	--	--	--	--	--	--	--	--	--	--	--	--	--	--	--	--	--	--	--	--	--	--	--	--	--	--	--	--	--	--	--	--	--	--	--	--	--	--	--	--	--	--	--	--	--	--	--	--	--	--	--	--	--	--	--	--	--	--	--	--	--	--	--	--	--	--	--	--	--	--	--	--	--	--	--	--	--	--	--	--	--	--	--	--	--	--	--	--	--	--	--	--	--	--	--	--	--	--	--	--	--	--	--	--	--	--	--	--	--	--	--	--	--	--	--	--	--	--	--	--	--	--	--	--	--	--	--	--	--	--	--	--	--	--	--	--	--	--	--	--	--	--	--	--	--	--	--	--	--	--	--	--	--	--	--	--	--	--	--	--	--	--	--	--	--	--	--	--	--	--	--	--	--	--	--	--	--	--	--	--	--	--	--	--	--	--	--	--	--	--	--	--	--	--	--	--	--	--	--	--	--	--	--	--	--	--	--	--	--	--	--	--	--	--	--	--	--	--	--	--	--	--	--	--	--	--	--	--	--	--	--	--	--	--	--	--	--	--	--	--	--	--	--	--	--	--	--	--	--	--	--	--	--	--	--	--	--	--	--	--	--	--	--	--	--	--	--	--	--	--	--	--	--	--	--	--	--	--	--	--	--	--	--	--	--	--	--	--	--	--	--	--	--	--	--	--	--	--	--	--	--	--	--	--	--	--	--	--	--	--	--	--	--	--	--	--	--	--	--	--	--	--	--	--	--	--	--

Organization Name:

(make checks payable to)

Date to return brochure:

Teacher:

Your Name:

Last Name

First Name

My goal is to sell:

Delivery/pick up date:

Prize Award if Applicable:

### NO CASH? SCAN 2 PAY!

- IMPORTANT: Scan 2 Pay is NOT an online order. You MUST write your order above.
- Scan the QR code or go to [shop.4SNS.com/Scan2Pay](http://shop.4SNS.com/Scan2Pay)
- Enter Organization/School ID provided from seller. Then follow prompts, Credit Card Info and \$ amount.
- A small service fee is applied; write CC authorization code in order above.
- Students will deliver items to the customers; these are not shipped to homes.



AMOUNT DUE

AMOUNT PAID

CC AUTHORIZATION CODE