



**District OR-1: Home of the Panthers!!**



**“Return to School” Plan**

**Fall 2020**

**Updated July 31, 2020**



## **District OR-1: Home of the Panthers!!**



### **Document Purpose:**

The purpose of this “Return to School” document is to provide a comprehensive framework for the return of students to District OR-1 facilities in a manner that maximizes student safety and learning. This plan is intended to be dynamic in nature, meaning that it can be adapted and updated at any time based upon current COVID incidences within our district and guidance from local, state, and federal government and health officials.

### **A Moment of Reflection:**

This pandemic is unlike anything we have ever experienced before and the fluidity of the ever changing conditions and ambiguity surrounding it may continue to frustrate us moving forward. Thinking back, we have been out of school since the second week of March. We are guessing that not even in our wildest dreams, did any of us ever think that this scenario was a possibility when it all began.

Fast forward through the spring and summer and we still find ourselves with plenty of uncertainty. That uncertainty remains our “new normal” and finding ways to effectively cope with that uncertainty will need to be a collaborative effort. We are still dealing with the very real trauma of sudden change and the ever present shadow of fear, but we want you to know that you are not alone. We want you to know that your kids are not alone. Schools play a vital role in the economic vitality and social fabric of our communities and students and staff getting back to learning in whatever form it presents (in-person, remote, etc... if it can be done safely and effectively) is critical to strengthening our community foundation.

This pandemic has affected all of us in different ways and it is our hope that by utilizing a solution based approach to challenges, embracing a “seek first to understand” rather than a “rush to judgement” philosophy, and working together to address various differences of opinion, we will move forward and be better.

Acknowledging our anxiety and facing the reality of what we are feeling is difficult. The concerns are real and we will do our best to hear everyone’s voice, but we also must collectively find the resolve to move forward. It is possible that not everyone will agree with every decision and action contained in this plan. We understand the frustration and confusion that has accompanied this virus and we are very cognizant that the different DHM’s ( directed health



## **District OR-1: Home of the Panthers!!**



measures) and protocols we invoke may not directly align with everyone’s own personal beliefs in every area. That is the reality of our situation, but please know that staff and student safety and support, and a commitment to student learning are the underlying core principles of this plan.

We know that there are still many decisions that need to be made as we move forward in finalizing a plan around keeping our students, staff, and our community stakeholders safe. We are hopeful this plan demonstrates confidence that we can adjust to any condition, that we have the best interests of our students and staff at the forefront, and that our commitment to educating our children is paramount.

To that end, we want to say “thank you”. Thank you for being a part of our district and thank you in advance for your flexibility and support as we navigate these uncharted waters. Our district remains tremendously appreciative of the support of our families and community members and it is our hope to provide students the best possible learning experience regardless of the context and circumstances of our present situation.

### **“Risk Dials” and District Operations:**

The general format that our district will follow for day-to-day operations for the school year 2020-2021 will fall into one of the “risk dial” areas noted below. These “risk dials” (developed by our local health departments) are based on the level of threat of community spread of COVID-19 for the district. The different risk levels are: **Green**: Low Spread, **Yellow**: Medium Spread, **Orange**: Moderate Spread, and **Red**: Severe Spread,

District OR-1 operations will be based on the [Lancaster County Health Department](#) and [Southeast District Health Department](#) “risk dials”. These dials will be updated as needed and may change very quickly according to a variety of different factors. Final decisions on DHM’s (Directed Health Measures) will be dependent upon guidance and requirements from state and local officials, and plans may need to change at a moment’s notice as the school year progresses.

The “Return to School” Plan has been a collaborative effort and the plan has been developed by the District OR-1 COVID-19 “Return to School” Team based upon information provided by the Center for Disease Control (CDC), the Nebraska Department of Education (NDE), ESU#4, and the Lancaster County and Southeast District Health Departments.



**District OR-1: Home of the Panthers!!**



**Risk Dials:**

For the purpose of monitoring our current level of risk, we will be using the Lancaster County and Southeast District Health Department “Risk Dials” to assist with decisions regarding the operation of schools during the coronavirus pandemic. The various “Risk Dials” for our district can be accessed at the following sites:

**Current COVID-19 “Risk Dial” Conditions:**

- [Lancaster County Health Department](#)
- [Southeast District Health Department](#)

<i>“Risk Dial” Definitions</i>			
<i>Low Level - Virus</i>	<i>Medium Level - Virus</i>	<i>Moderate Level Virus</i>	<i>High Level - Virus</i>

**“Low Risk” Level:**

- This type of school operations would mean that all students and staff return and school buildings are open with minimal restrictions, but with preventative practices or additional proactive protocols in place to meet current health district and NDE guidance.
- Low does not mean “no risk”. Precautions are still implemented as a means of remaining in an uninterrupted, in-person learning environment status.
- For this level, 100% of students are “on site” for face to face learning.



## **District OR-1: Home of the Panthers!!**



### **Medium Risk Level:**

- This level means that enhanced precautions are implemented as a means of remaining in an uninterrupted, in-person learning environment.
- 100% of students are on site for face to face learning.

### **Moderate Risk Level:**

- Further enhanced precautions could be implemented as a means of minimizing disruptions to the in-person learning environment status.
- This level could also result in a “Hybrid” model of learning meaning that a combination of on-site/in-person instruction would be paired with remote (home-based) learning opportunities. Students could be divided into two learning groups with 2 days on-site/in-person instruction and 3 days remote/home-based learning opportunities each week.
- **Please note:** *If we need to move to a “hybrid learning” scenario, we will do our best to minimize the disruption to families in terms of scheduling that accommodates all family members. For example, if a parent has two children at the elementary and one at the high school, we would make sure those children attend the same days.*

### **High Risk Level:**

- Remote/home-based learning only
- No students will report for on-site/in-person learning unless special circumstances exist (Special education needs determined by an IEP, etc.).
- As evidenced by last spring, school districts can operate remotely. This is not an ideal situation because the relationship between a teacher and student is critical.
- This level also creates obstacles in establishing routines and transitions as well as gathering baseline data on students.
- If we were to operate at this level, we would not need to follow social distancing guidelines as students would not be on campus

### **“Return to School” Plan Objectives:**

- Paramount focus is placed on student, staff, and community safety
- Facilitate practical, purposeful, and effective instructional practices to maximize learning opportunities for all students
- Alignment with current Directed Health Measures
- Equity and access for all students



## **District OR-1: Home of the Panthers!!**



### **Guiding Principles:**

- We will center decisions on what is best for all students, families, and educators.
- We will be purposeful and proactive in our planning.
- We will provide “portability of instruction” and equitable access of school-based support systems and learning to all of our students.
- We will critically analyze and honestly reflect on “lessons learned” and strive to get better each day.
- We understand that flexibility is essential.
- We will work collaboratively to maintain a “solution based” growth mindset.
- We will actively listen to others and seek first to understand opinions that may be different.
- We will work to maximize our resources and problem solve solutions to various challenges.
- We will provide clarity about what we can control and what is outside of our control, we will admit mistakes, and adapt quickly to changing conditions.
- We will demonstrate respect for diversity, and show compassion and empathy for others.

### **Guiding Safety Protocols:**

- Encourage staff and students to stay home when they are sick and support staff and students in their absence.
- Maintain and practice social distancing protocols as applicable
- Utilize Personal Protective Equipment (PPE) in support of the current Directed Health Measures as directed.
- Adequate amounts of supplies and equipment will be available for use (masks, cleaning supplies, hand sanitizer, etc.).
- Maximize learning opportunities and provide training for cleaning, disinfecting, and sanitizing.
- Teach and role model good personal hygiene protocols (handwashing, cover coughs, sneezes, etc.).
- Provide appropriate training and expectations for staff, students, and community members.



## **District OR-1: Home of the Panthers!!**



### **District Vision:**

- Together we prepare our students to successfully meet the challenges of the future.

### **District Beliefs:**

- **OR-1 will:**
  - Model and reinforce self-respect and respect for others.
  - Provide equal opportunity for each student to develop his/her potential.
  - Seek to develop a sense of individual responsibility and integrity.
  - Seek and integrate educationally sound innovations into the curriculum.
  - Provide a safe learning environment.

### **District Mission:**

District OR-1 commits to a course of action providing continued academic growth through a curriculum that recognizes limitless potential and inspires faith in a positive future for every student. With a sense of community ownership and responsibility, we will remain fiscally accountable and attentive to current and future high-tech facility and staffing needs.

### **District Survey Results:**

At the beginning of July, we sent out a survey to families about conditions for returning to school. We had approximately 350 responses to each question. Listed below is a summarized list of responses. We greatly appreciate the feedback from our parents and families. Thank You!

**Question # 1:** In an effort to ensure all students can connect to school resources, efforts are being made to facilitate Internet Connectivity to those who are unable to afford reliable broadband. Do you have internet access at your home?

- **95% responded Yes.**

**Question # 2:** If student(s) return to school this fall, are you comfortable sending your student(s) to school?

- **75% responded Yes.**

**Question # 3:** If students return to school this fall with a requirement to wear a mask, will you be comfortable and agreeable with your student(s) wearing a mask at school?

- **75% responded Yes.**



## **District OR-1: Home of the Panthers!!**



### **“Return to School” Planning Team Members:**

- **Michael Hart:** Superintendent of Schools
- **Heath Johnson:** High School Principal
- **Linde Walter:** Elementary School Principal
- **Aaron Hoefft:** Activities Director/ Special Education Teacher
- **Burke Brown:** Technology Coordinator
- **Michael Chaffee:** Guidance Counselor
- **Laura Dawson:** Bennet Elementary Secretary
- **Clarrisa Dush:** Food Service
- **Rebecca Dvorak -** Kindergarten Teacher
- **Brad Gabriel:** Industrial Technology Teacher
- **Rebecca Gill-Rose:** Spanish Teacher
- **Karen Hatcher:** Superintendent's Office
- **Julie Hippen:** Parent/ Community Member
- **Casey Lundquist:** School Nurse
- **Tyler Maas:** Math Teacher
- **Braston Maibaum:** 6th Grade Teacher
- **Beth McCreight:** K-12 Vocal Music Teacher
- **Nichole Ourada:** 4th Grade Teacher
- **Lisa Phillips:** Superintendent's Office
- **Ryan Pollock:** English/ Psychology Teacher
- **Jane Powell:** 7-12 Secretary
- **Sarah Swartzendruber:** K-12 Art Teacher
- **Karen Skinner:** Food Service
- **Ronald Wergin:** 7-12 Physical Education Teacher
- **Lisa Wilen:** Parent/ Community Member

The manner in which District OR-1 will operate during the COVID-19 pandemic is addressed in this plan by recommendations from our planning team in the following categories:

- **Custodial / Health**
- **Transportation**
- **SPED/ 504/ Student Services**
- **Calendar/ Logistics**
- **Instruction / Class Size**
- **Activities**





## **District OR-1: Home of the Panthers!!**



- **Food Service**
- **Technology/ Communications**
- **Personnel**

### **General Expectations and Administrative Information:**

During the 2020-2021 school year, there might be a short-term closure or a long-term closure because of a COVID-19 outbreak in our area. We are encouraging parents to plan for both scenarios this school year. If the state declares this pandemic over, all COVID-19 related resolutions and plans will end appropriately.

### **Conflicts with Policy and Handbooks:**

For components of this reopening plan that contradict board-approved mandates, **the provisions in this document shall supersede any other Board policies, handbook provisions, or safety plans** until such time that the District OR-1 Board of Education takes action to discontinue or amend this plan, or until COVID-19 pandemic conditions diminish to a degree that renders this plan no longer applicable.

### **Administrative Discretion:**

Administration shall determine specific aspects of day-to-day school operations, not clearly addressed in this plan, for each category at each risk level. The superintendent has the final authority to determine the risk mode in which the school will operate any given day, using his/her best judgment in applying health department “risk dial” levels to the District. Changes in school operations and risk levels will be communicated to parents in an expeditious manner.

### **Student Attendance, Make Up Work/, Learning Expectations, amd Medically Excused Absences:**

Attendance is expected for all students and attendance will be taken for all students every day. Student instruction will occur in-person in the classroom (or in an online-learning mode) unless otherwise directed by law.

All students who are enrolled in the school district are required to attend school on all days when school is open for providing instruction, unless they are excused from attendance by law. Student IEP or 504 Plan teams may take into consideration alternate learning accommodations based on risks associated with specific student disabilities.



## **District OR-1: Home of the Panthers!!**

Students who quarantine due to COVID-19 contraction or exposure, or students who stay home because they have COVID-19 related symptoms, are expected to make up missed school work and learning in the same manner as for any illness-related missed school days as outlined in the student handbooks and board policy.

All COVID-19 related missed school days will be treated as medically-excused absences with a parent/guardian note, and will not require a doctor's note to be medically excused. Medically-excused absences with a parent note applies to students who quarantine due to COVID-19 contraction or exposure, as well as students who stay home because they have COVID-19 related symptoms.

### **Quarantining and Application of Directed Health Measures (DHM) for Students:**

Students who test positive for COVID-19 are required to quarantine from school until they can provide a doctor's note indicating they no longer have the virus. Students who have come in contact with someone with COVID-19, as defined by [Directed Health Measures](#) are expected to quarantine from the school as defined in the DHM's.

Unless a DHM specifically requires the District to enforce a quarantine, it is the student's responsibility to quarantine. Because the District lacks the authority to enforce law (a DHM is a law), the District will not enforce any student quarantine, based on DHM's directed only at individuals and not at school districts, including when a student has interacted with a COVID-19 positive individual.

### **COVID Symptoms and Response Protocols:**

The following symptom screening criteria for ill students and staff is based on the most current research. Because people with COVID-19 have reported a wide range of symptoms – ranging from mild symptoms to severe illness, the following criteria has been developed to assist schools in identifying presumptive positive COVID-19 cases.

1. Fever (measured or subjective)
2. Chills,
3. Rigors,
4. Myalgia,
5. Headache,
6. Sore throat,
7. Nausea,
8. Vomiting.
9. Loss of smell.
10. Diarrhea



## **District OR-1: Home of the Panthers!!**

### **Testing Protocol for Students and Responding to Positive Cases**

- Students who develop a fever or fall ill at school should be transported by their parents, or ambulance if clinically unstable, for off-site testing.
- Parents should be notified of the presence of any positive cases in the classroom and/or school to encourage closer observation for any symptoms at home.
- Students sent home from school should be kept home until they have tested negative or have completely recovered according to CDC guidelines.
- In the event that a student tests positive, immediate efforts should be made to contact any close contacts (those who spent more than 10 minutes in close proximity to the student) so that they can be quarantined at home. Classmates should be closely monitored for any symptoms. At this time, testing of all students in the class is not recommended, only those that develop symptoms require testing.

### **District Response to Positive Tests Among Students**

- In the event of a positive test among staff or a student, the classroom or areas exposed should be immediately closed until cleaning and disinfection can be performed.
- If the person was in the school building without a facial covering, or large areas of the school were exposed to the person, short term dismissals (2-5 days) may be required to clean and disinfect the larger areas. This decision should be made in collaboration with local public health departments.
- If possible, smaller areas should be closed for 24 hours before cleaning to minimize the risk of any airborne particles.
- Staff and students should be prepared to do online learning if the building is closed for 24 hours or more to clean.
- Students and employees will be excluded from school if they test positive for COVID-19 or exhibit one or more of the symptoms of COVID-19 based on CDC Guidance that is not otherwise explained.
- Once a student or employee is excluded from the school environment, they may return if they satisfy the recommendations of the CDC.



## **District OR-1: Home of the Panthers!!**



### **Protocols for Students experiencing Symptoms, but have not been tested:**

Persons who have not received a test proving or disproving the presence of COVID-19 but experience symptoms may return if the following three conditions are met:

- They have not had a fever of greater than **100.4** degrees Fahrenheit for at least 72 hours (that is three full days of no fever without the use of medicine that reduces fevers); and
- Other symptoms have improved (for example, cough or shortness of breath have improved); and
- At least 10 calendar days have passed since symptoms first appeared.
- For additional questions, here is the Link to [Nebraska COVID-19 testing facilities](#)

### **Protocols for Students who test positive for COVID-19 and are symptomatic:**

Persons who experience symptoms and have been tested for COVID-19 may return to school if the following conditions are met:

- The individual no longer has a fever for 72 hours (without the use of medicine that reduces fevers); and
- Other symptoms have improved (cough or shortness of breath have improved); and
- At least 10 calendar days have passed since symptoms first appeared

### **Protocols for Students who have Tested Positive, but are Asymptomatic:**

- Persons who have not had symptoms, but tested positive for COVID-19 may return when they have gone ten calendar days from the date they tested positive and have been released by a healthcare provider. Students may also return if they are approved to do so in writing by the student's health care provider.

### **Protocols for Students who tested Negative for COVID-19:**

- Persons who have been excluded due to COVID-19 symptoms and have tested negative may return once they are fever free for at least 24 hours without medication.

### **Protocols for Students with Underlying Medical Conditions**

- If a student has an underlying medical condition, the parents/guardians can contact the



## **District OR-1: Home of the Panthers!!**



building principal to set up an off campus 504 Plan for their son or daughter during the 2020-2021 school year.

### **Protocols for Medical Inquiries:**

- If a parent tells the district/school that a student is ill, the district/school will ask the parent whether the student is exhibiting any symptoms of COVID-19.
- If an employee calls in sick or appears ill, the district/school can inquire as to whether the employee is experiencing any COVID-19 symptoms.

***Special Note:** Even without symptoms, if a student or employee has recently had contact with a person with a suspected or confirmed case of COVID-19, has someone in their home being tested for COVID-19, or has recently traveled from somewhere considered to be a “hot spot” by the CDC, the district/school may exclude the student or employee from the school building and recommend that they self-quarantine for 14 calendar days. Decisions in these circumstances will be made in collaboration with public health officials and will vary based upon the specific circumstances.*

### **Clinical Space for COVID-19 Symptomatic Students:**

- Health offices will have a separate space for students and staff displaying symptoms of COVID-19 where they can be evaluated or wait for pick up to return home.
- If students or staff are being evaluated for symptoms of COVID-19 they will be required to wear a face mask at all times as directed by the health office staff.
- Strict social distancing will be required and health staff will wear appropriate PPE.
- A record will be kept of all persons who enter the isolation room and will be disinfected after every use.
- Upon entering, students and staff will be asked to perform hand hygiene by washing with soap and water or using hand sanitizer.

### **Clinical Space Non-COVID-19 Related Students:**

- Students who do not display symptoms of COVID-19 can be seen and treated after screening by health office staff.
- Strict social distancing will be required and health office staff will wear appropriate PPE.
- The health office will be disinfected throughout the day and staff and students



## **District OR-1: Home of the Panthers!!**

will be asked to perform hand hygiene with resources available.

### **Communication Protocols**

District OR-1 will utilize a number of communication methods to ensure parents, students, staff, and the community are all informed of potential changes. To help us maximize these resources, **it is vital that all students are registered for the 2020-2021 school year and all parent/guardian contact information is updated and current.** Students should be registered in Powerschool. If you have questions about registration, contact the elementary or high school school offices. Other communication key points are listed below:

- Please make sure that your contact information is complete and updated. It is vital to be able to contact families in the case of emergencies, etc.
- Phone, email and text messages to parents will be sent through Powerschool, the district website, and various social media platforms.
- Contacting administration is the district's preferred method for communication. Please also contact our school offices immediately if there is an address, name, etc. update so that we can be sure information is distributed accurately to everyone.
- In-person on-site meetings are strongly discouraged and should be scheduled in advance. Any on-site visitors will go through a screening process and attendance will be documented.
- Meetings between parents and teachers will be scheduled as requested.
- At this time, there will be no in-person district scheduled parent/teacher conferences this year. Parents should contact their students' teachers as needed.
- We also will plan to use a standardized model for communication by sending weekly comprehensive updates via the website and district social media accounts. We plan for this to go out consistently on the same day of the week, creating a reliable source of accurate and timely information.
- We will be printing/laminating signage to be posted around the schools. These signs are from the CDC website and address knowing the symptoms of Covid-19, stopping the spread, and washing your hands. These are to be cues to students and staff throughout their day to be aware of ways to protect themselves and others.



## **District OR-1: Home of the Panthers!!**

### **Face Coverings/Masks:**

Face masks will be worn by students and staff at all times in a manner that is reasonable and appropriate. Staff and students will be required to wear masks at the **yellow** and **orange** levels. Masks are strongly encouraged for students at the **green** level and they are required for staff at the **green** level.

The use of cloth face masks consistently among students/staff who are unable to physically distance by 6 feet is a critical factor in determining the need for quarantine if a positive COVID-19 case arises in our district. For example, local health officials have indicated that when a COVID positive case arises in a school setting, staff and students who were around that person may not be required to quarantine IF face coverings were worn consistently and appropriately (unless extenuating circumstances apply).

Staff and students who were around the infected person will be required to quarantine IF face coverings were NOT worn by the COVID positive individual and/or those individuals who were near that person (within the 6' radius).

Although we are doing everything we can to create the safest environment possible for all students, it is not possible for students and staff to maintain 6 feet of social distancing space around each individual at all times throughout the day. All things considered, face masks are the best way to reduce the risk to students and staff from potential exposure to COVID and the resulting 14 day quarantines. Because of this, we are asking all parents to assist us in encouraging students to wear their masks throughout the school day--consistently and appropriately. In addition, we are requiring our staff to wear their masks throughout the day at all levels until further notice. There will be certain times (mask breaks, eating, various physical activities, etc.) where students will be allowed to remove their masks for short periods of time.

To help facilitate this expectation, our district will provide two cloth masks for all students in grades 7-12 and five smaller masks for students in grades Pre-K- 6th grade to wear at school. Bandanas are not an acceptable face covering/mask.

When our district is operating within the **Green** “Risk Dial”, masks will be recommended for all students. (Masks will be required for staff at this level until further notice). Masks will also be worn at all times when students are riding on district transportation vehicles.

When our district is operating within the **Yellow** “Risk Dial”, masks will be required for students



## **District OR-1: Home of the Panthers!!**



and staff. Masks will also be worn at all times when students are riding on district transportation vehicles.

When our district is operating within the **Orange** “Risk Dial”, masks will be required for students and staff. Masks will be worn at all times when students are riding on district transportation vehicles.

When our district is operating within the **Red** “Risk Dial, students will not be reporting to school on-site. If staff are at school in the red “Risk Dial” they will be required to wear masks as directed and as appropriate for the situation.

**Special Note:** Individual waivers may be provided to those students with legitimate and documented medical reasons for not wearing a face mask. If you need more information regarding a potential waiver, please contact your building principal.

### **Transportation Plan**

District OR-1 will ensure all students and bus drivers are safe at all times. Due to the inability to safely social distance on district vehicles, masks will be worn on the bus by staff and students at all times. A list of bus procedures is listed below:

- We will load all vehicles with students in a back to front order and all students will exit the vehicle in a front to back order.
- Students will be required to sit by their siblings (if applicable) on all bus rides.
- We are highly recommending older siblings that currently drive to school to take their younger sibling each day to school to allow for more social distance space on daily bus routes.
- All bus drivers will clean their vehicles thoroughly after every daily bus route.
- Bus drivers will keep a couple windows down on all bus routes to provide ventilation for bus riders These window protocols will change during the winter months.





## **District OR-1: Home of the Panthers!!**



### **Special Considerations for Preschool Students and Parents:**

We will do our best to remain as normal as possible, with mitigation measures in place wherever possible and when necessary based on current DHM guidelines. Preschool will follow any additional guidelines of the school location. Preschool will follow last year's schedule and sanitation of classrooms will take place between morning and afternoon sessions. Preschool students will be encouraged to wear a mask during pick up and drop of times.

### **Daily Operating Protocols:**

- Parents will not be allowed to bring preschoolers in the building.
- Visitors will not be allowed during the school day.
- Students will be screened and wash hands immediately upon arrival.
- Students will be escorted directly to their classroom once they wash their hands.
- Students will be dismissed directly from their classroom and escorted to parents outside the building after each session.. This may cause a little longer dismissal process.
- Breakfast/lunch will be served in classrooms with social distancing.
- Classes will not join with other classes for any activities.
- Restrooms are assigned to specific classrooms and students may only use those designated restrooms.
- No dress-up clothes or stuffed animals will be allowed.
- Center areas will be limited due to sanitizing and cleaning guidelines.
- All sensory activities will be individual rather than shared.
- All students will have individual supplies rather than shared when possible.
- All shared materials will rotate between classrooms and will be sanitized between each classroom.
- Only items able to be cleaned between usage can be shared.
- All students and staff will wash hands before and after using any equipment.
- Anything in contact with bodily fluids will be removed and sanitized. Gloves will be worn.
- Enhanced cleaning from everyone will help keep the classrooms, buildings and items sanitized.

**Attached to this document is a link to a more detailed plan for Preschool Operations:**

- [Preschool COVID-19 Classroom Protocol](#)



## **District OR-1: Home of the Panthers!!**



### **Bennet Elementary “Return To School” Plan**

#### **Entering the Building:**

When students enter the building they will be required to wear a mask.

1. All staff will be required to wash their hands and be temperature checked before going to their classroom.
2. Preschool students will enter beginning at 7:55 through the preschool playground door (Mrs. Hohensee’s classroom) and the preschool entrance for Ms. Lamb’s classroom. All students will be temperature checked and wash hands upon sitting down for breakfast/lunch.
3. Bus students will enter through the front doors at 7:35 and be temperature checked and use hand sanitizer. Bus duty students will sit at the lunchroom tables until 7:45 when staff take them outside. 8:20 bus duty students will enter through the front doors, use hand sanitizer and walk to their classrooms.
4. Students using the before school program will be temperature checked and wash hands before entering the REC room by a staff member.
5. Students who are not at bus duty or use the before and after school program will NOT be allowed in the buildings until 8:00. Students will enter through the front doors and use hand sanitizer and be temperature checked before going into their classroom.
6. Students who ride the bus will be dismissed off the bus and enter through the North doors. There a staff member will temperature check all students before entering their classroom.

Students who temperature check high will be highlighted on the clipboard and be allowed to continue to class. Once all students have been temperature checked and checked in a follow up temperature screening will be provided to these students.

#### **Mask Breaks:**

All classrooms will take a mask break each hour. This schedule will be determined by the principal and followed by all classroom teachers.

#### **Lunch/Recess:**

One grade level at time will be allowed on the playground during their scheduled time. Students will be allowed on the equipment during recess. There will be no sport balls, hula hoops, jump ropes, etc. used at recess. Equipment will be sprayed down after each grade level.

- K-3 grade will eat in their classrooms.



## **District OR-1: Home of the Panthers!!**



- 4<sup>th</sup>-6<sup>th</sup> grade will eat in the lunch room.

### **Dismissal:**

Kdg-3<sup>rd</sup> Grade bus students will be dismissed at 3:05 out the North doors. 4<sup>th</sup>-6<sup>th</sup> grade bus students will be dismissed from their classrooms at 3:15.

KDG-3<sup>rd</sup> grade students who are using REC will be dismissed at 3:10. 4<sup>th</sup>-6<sup>th</sup> grade REC students will be dismissed with their classrooms.

KDG students who are parent pick up will exit out the preschool doors:

- Dvorak: 3:10
- Nietzsche: 3:15
- Wusk: 3:20

1<sup>st</sup>-3<sup>rd</sup> students who are parent pick up will exit out the front entrance.

- 1<sup>st</sup> grade will exit at 3:10
- 2<sup>nd</sup> grade will exit at 3:20
- 3<sup>rd</sup> grade will exit at 3:15

4<sup>th</sup>-6<sup>th</sup> students who are parent pick up will exit out the gym doors.

- 4<sup>th</sup> grade will exit at 3:10
- 5<sup>th</sup> grade will exit at 3:15
- 6<sup>th</sup> grade will exit at 3:20

Parents may walk up to meet their students. Social distancing and mask wearing will be recommended during this time. Parents may also wait in their vehicles and have students come to them.

### **Block/Specials Classes:**

Each block class will follow a 10-day rotation: example: 3<sup>rd</sup> grade will have PE for 10 days and then Music for the next 10 days, followed by Art the next 10 days, etc.

If you have any question regarding the elementary “Return to School” plan, please contact the Bennet Elementary school office at (402) 782-3535.



**District OR-1: Home of the Panthers!!**



**Summarized “Return To School” Area / Procedure Protocols for all Risk Levels:**

<b>Screenings for Students</b>	<ul style="list-style-type: none"><li>● Parents are encouraged to check student’s temperature at home every morning using oral, tympanic, or temporal scanners; students with a temperature of <u>100.4 or greater</u> should stay home and consider coronavirus testing if no other explanation is available.</li><li>● Parents are encouraged to ask their children or monitor for any cough, congestion, shortness of breath, or gastrointestinal symptoms every morning. Any positives should prompt the parent to keep the student home from school and seek out testing.</li><li>● Parents should also screen their children at home for fever or chills, cough, shortness of breath or difficulty breathing, fatigue, muscle or body aches, headache, new loss of taste or smell, sore throat, congestion or runny nose, nausea or vomiting, and diarrhea</li><li>● If symptomatic, students will not report to school and parents should consult a medical professional</li><li>● Students will be screened once they arrive at school</li><li>● Additional temperature checks may be taken as reasonable and directed throughout the school day by health office personnel</li><li>● Results of temperature checks will be strictly confidential in line with state and local guidelines</li></ul>
<b>Pick-up / Drop-Off of Students</b>	<ul style="list-style-type: none"><li>● Parents will remain in their vehicles during pick-up and drop-off until further notice</li><li>● Congregating at the building entrances or exit areas will not be allowed</li></ul>
<b>Entering Building</b>	<ul style="list-style-type: none"><li>● Current social distancing practices will be in place</li><li>● Students will enter through assigned doors</li><li>● Early entry into the building will be considered in extreme weather temperatures/conditions</li></ul>
<b>Masks</b>	<ul style="list-style-type: none"><li>● Face coverings are required by all staff and all students in the Green (staff only), Yellow, and Orange levels</li><li>● Appropriate face coverings such as face shields or clear view masks may be utilized when needed. A face shield</li></ul>



### **District OR-1: Home of the Panthers!!**

	<p>is not an acceptable alternative for a mask0</p> <ul style="list-style-type: none"><li>● Until further notice, while in any district facilities, everyone will wear a face covering that covers their mouth and nose. All students should clearly label their mask with name/initials and grade level.</li><li>● Clear face masks will be available for students relying on lip reading or needing to see lip movement in certain classes.</li><li>● Parents are responsible for cleaning masks and sending them back to school with students.</li><li>● Preschool will take extra precautions, and screen students daily until wearing face coverings becomes routine.</li><li>● All face coverings must follow our district dress code policy. Apparel must comply with the health and safety codes and not interfere with the educational process or cause a disruption to the learning environment.<ul style="list-style-type: none"><li>○ We will not allow messages or drawings, especially intimidating, hostile or offensive messages or drawings on face coverings. Apparel that advocates tolerance for (or advertises) controlled or illegal products or substances will also not be permitted.</li><li>○ Any question concerning appropriate apparel shall be handled on an individual basis by the immediate supervisor, teacher or building administrator.</li></ul></li><li>● If an individual is not around others (i.e. one individual teacher in a classroom, individual in office alone with the door closed) the face covering may be removed until such time as others enter the space.</li><li>● “Masks breaks” will be scheduled throughout the day as needed.</li><li>● Individuals are encouraged to wash their hands or use hand sanitizer after putting on, touching, or removing face coverings.</li><li>● Face coverings should only be removed for meals or at the request of a staff member.</li><li>● A limited supply of face covering will be provided at no charge at the beginning of the school year. Families may choose to bring their own mask if it meets the guidelines listed above.</li></ul>
--	--



**District OR-1: Home of the Panthers!!**

	<ul style="list-style-type: none"><li>● If a student comes to school without a face covering, we will provide one as needed.</li><li>● Staff will support students in the monitoring and education about the use of face coverings in the classroom/ buildings. Wearing a face covering should be respected and not ridiculed.</li><li>● Students will be required to wear face masks during passing times and times spent in common areas unless otherwise directed. Masks may be removed while eating lunch, during physical exercise or sports practices, or while singing or playing a musical instrument, etc.).</li><li>● 7-12 students may be allowed to temporarily remove their facemask <u>if students' chairs or assigned areas are adequately distanced</u> at the discretion of the teacher or supervisor.</li><li>● Students refusing to wear a face mask when instructed to by school personnel (unless not required to do so under an IEP or 504 Plan accommodation) are subject to discipline for violating district behavior expectations, and are subject to discipline as outlined in the student handbook and board policy.</li><li>● Face shields are not considered an equivalent replacement for face masks to prevent COVID-19 spread. However, for students with disabilities preventing them from wearing masks, IEP or 504 Plan teams may consider face shields as replacements for masks.</li><li>● Students in grades K-6 will be required to wear masks due to lack of social distancing space requirements.</li></ul>
<p><b>Hand Washing / Hand Sanitizing</b></p>	<ul style="list-style-type: none"><li>● Students and staff will wash or sanitize their hands when entering the buildings (i.e. first classroom a student enters), when entering and exiting individual classrooms, when entering and exiting cafeteria, and when exiting a building.</li><li>● Hand sanitizer will be available throughout the day.</li><li>● Cleaning and disinfecting is everyone's responsibility.</li><li>● The district will provide training on disinfecting and cleaning chemicals and other supplies.</li><li>● The district has cleaning equipment to quickly and effectively take care of entire buildings.</li></ul>



**District OR-1: Home of the Panthers!!**

	<ul style="list-style-type: none"><li>● Personal items will be cleaned and disinfected immediately after use by the user.</li></ul>
<b>Media Center</b>	<ul style="list-style-type: none"><li>● Media center access will be restricted. A schedule will be developed for classes to have the opportunity to check out library materials.</li><li>● The media center will follow strict guidelines set by the State Library Commission.</li><li>● Returned materials will be placed in a box or container for four days before the items are put back on the shelves,</li><li>● Students will be allowed one book/item to check out at a time.</li></ul>
<b>“High Touch” Surface Cleaning</b>	<ul style="list-style-type: none"><li>● Enhanced cleaning protocols will be in place throughout the school day.</li><li>● Routine and “high-touch” areas will be cleaned and disinfected often.</li></ul>
<b>Technology:</b>	<ul style="list-style-type: none"><li>● Technology will be critical for all risk levels and adequate infrastructure and access for all students will be available for learning and instruction.</li></ul>
<b>Sharing of Supplies/ Equipment</b>	<ul style="list-style-type: none"><li>● We are asking staff members to keep each child’s belongings separated from others and to keep belongings in individually labeled containers, cubbies, or designated areas. We want staff to minimize the sharing of high touch materials to the greatest extent possible (Books, electronic devices, school supplies, and toys).</li><li>● If equipment needs to be used by a group of students, staff members will only allow one student at a time to use the equipment and the staff members must clean and disinfect the equipment between uses.</li></ul>
<b>Cafeteria / Meals</b>	<ul style="list-style-type: none"><li>● <b>Elem:</b> Breakfast/Lunch: KDG-3rd grade eat in classrooms, 4th-6th eat in the lunchroom.</li><li>● <b>JH/ HS:</b> May increase the number of lunch periods and eat in additional common spaces to allow for social</li></ul>



**District OR-1: Home of the Panthers!!**

	<p>distancing as needed.</p> <ul style="list-style-type: none"><li>● No salad bar or self serve items will be available.</li><li>● No cash at point of sale. Money may be deposited on account through the main office.</li><li>● Small groups may be allowed to eat in the gym or other areas if needed using social distancing.</li></ul>
<b>Water Fountains</b>	<ul style="list-style-type: none"><li>● We are asking all students and staff members to use water bottles throughout the 2020-2021 school year.</li><li>● Only the water bottle filler part of the drinking fountain will be able to be used.</li><li>● Bottled water will be provided as needed to students that forget to bring water bottles.</li><li>● Students can refill bottles from appropriate water sources.</li></ul>
<b>Passing Periods</b>	<ul style="list-style-type: none"><li>● Students will walk on the right side of the hallways</li><li>● Students will carry all supplies in backpacks as no locker use will be permitted</li><li>● HS: Walk on the right side of the hallway / lockers may be available depending on risk levels.</li><li>● Elementary: follow arrows as directed.</li></ul>
<b>Social Distancing Expectations in Classrooms</b>	<ul style="list-style-type: none"><li>● Social distancing of 6 feet will be expected in classrooms when physically possible.</li><li>● If 6 feet cannot be established between individual students, students will be seated in pods and socially distanced as the classroom allows.</li></ul>
<b>Exiting the Building</b>	<ul style="list-style-type: none"><li>● Social distancing practices will be in place for exiting the buildings.</li><li>● <b>Elem:</b> see Elementary “Return To School” plan.</li><li>● Parents stay in vehicles.</li><li>● Students will exit through designated points.</li><li>● <b>HS:</b> Students will exit through designated points.</li></ul>
<b>Visitors to School</b>	<ul style="list-style-type: none"><li>● Parents, guardians, and visitors will be extremely limited in our buildings until further notice. Access will be limited to school extracurricular activities and appointments must be made ahead of time.</li><li>● All formal educational meetings may need to occur online or over the phone (Individual Education</li></ul>





**District OR-1: Home of the Panthers!!**

	<p>Meetings, Parent Teacher Conferences, 504 Meetings, etc.).</p> <ul style="list-style-type: none"> <li>● Only staff currently on payroll, individuals that drop off needed supplies, and personnel that need to work on the facilities will be allowed in the district facilities.</li> <li>● If a visitor is allowed and makes an appointment, the visitor will need to wear a mask until further notice. Masks will be available outside the front door if needed.</li> <li>● Visitors will not be allowed past the school office.</li> <li>● For all students who need to leave the buildings during school hours, (appointment, illness, need to leave early, etc.) parents should call the school office upon arrival to the building and the student will then be released.</li> <li>● Visitors to the school will be required to wear a facemask while they are in the school buildings unless directed otherwise by school officials.</li> <li>● Visitors into school will be limited by administration to individuals necessary to support the education of children, such as ESU and OT/PT workers, guest speakers, mentors, volunteer workers, etc.</li> <li>● Parents, grandparents, student family members, etc. will only be allowed into the school building on an emergency basis or for scheduled meetings (such as IEP meetings).</li> <li>● Parents/guardians may come to the elementary and high school main offices to turn in paperwork, check out their children, or bring items to their children. However, they will not be allowed to go beyond the main office other than for emergency situations or pre-scheduled meetings.</li> </ul>
<b>Bus Transportation</b>	<ul style="list-style-type: none"> <li>● Students will be assigned seats and will be required to wear masks as conditions dictate; drivers and riders will be required to wear a mask until further notice.</li> <li>● Surfaces will be wiped/sprayed down between routes.</li> <li>● Students with special needs will be spaced as far apart as possible on vehicles.</li> </ul>



**District OR-1: Home of the Panthers!!**

<b>School Assemblies</b>	<ul style="list-style-type: none"><li>● School assemblies and large gatherings of students as part of the curriculum will be restricted during the 2020-2021 school year.</li><li>● Social distancing will be practiced at all home extra-curricular activities when possible.</li></ul>
<b>Facility Usage by Outside Organizations</b>	<ul style="list-style-type: none"><li>● We will follow state Directed Health Measures (DHM) and current NSAA guidance.</li><li>● Facility usage by outside organizations will be extremely limited until further notice.</li></ul>
<b>Extracurricular Activities</b>	<ul style="list-style-type: none"><li>● Activities such as the homecoming dance and prom will be evaluated based on the Directed Health Measure throughout the 2020-2021 school year.</li><li>● Extra-curricular activities (Instrumental &amp; Vocal music performances, Play Production, and Speech), athletic teams (Football, Wrestling, Volleyball, Basketball, and Track), and school sponsored clubs (Future Business Leaders of America, Future Farmers of America, National Honor Society, Student Council, etc.) will be evaluated based on the Directed Health Measure throughout the 2020-2021 school year.</li><li>● For high school NSAA-governed activities, the District will follow the <u>NSAA Return to Activities</u> document, or any additional forthcoming guidance from NSAA, as well as the provisions detailed below.</li><li>● Jr. High activities, that are the same activities as those covered by the NSAA for high school students, will follow the same guidelines for participation and public attendance as applied to NSAA-governed high school activities.</li><li>● Activities not governed by NSAA (e.g. FFA, NHS, Quiz Bowl, Student Council, etc.) shall follow the same guidelines for participation and public attendance as applied to NSAA-governed activities.</li><li>● Administration shall have the authority to limit the degree of physical interaction for activities, beyond NSAA guidance, if administration deems it appropriate to ensure safety based on community COVID-19</li></ul>



**District OR-1: Home of the Panthers!!**

	<p>circumstances.</p> <ul style="list-style-type: none"><li>● Music concerts, public performances, banquets, fun nights, and other gatherings of people in school buildings for public performances may be restricted during the pandemic.</li><li>● For the duration of this plan, there will be no school sponsored trips during the 2020-2021 school year (college visits, class trips, field trips, etc.).</li></ul>
<b>Recess (Elementary)</b>	<ul style="list-style-type: none"><li>● Social distancing of 6 feet between groups of more than four will be expected when physically possible</li><li>● Outside recess will be allowed as scheduled if weather conditions allow it.</li><li>● On days when students cannot go outside due to weather, we will have recess in the gym or other area.</li><li>● Students will wear masks if unable to maintain appropriate social distancing guidelines.</li><li>● Students may have structured activity time in the classroom in place of recess in case of inclement weather.</li></ul>
<b>Physical Education and “Specials” Classes:</b>	<ul style="list-style-type: none"><li>● “Specials” teachers will rotate through classrooms on a regular schedule.</li><li>● “Specials” classes curriculum will be adjusted as needed to fit class and space needs.</li></ul>
<b>Technology:</b>	<ul style="list-style-type: none"><li>● Chromebooks will be available to grades 4-12 and students will be expected to take home their devices every night and utilize the device to access and complete learning and assignment expectations.</li></ul>



**District OR-1: Home of the Panthers!!**



**Additional Information on Specific Areas of Consideration:  
Categorized by Risk Level**

**Entering and Exiting Buildings:**

LOW or MODERATE SPREAD	HIGH SPREAD	SEVERE SPREAD
<p><b><u>Student Entrance @ High School</u></b></p> <ul style="list-style-type: none"> <li>All students who drive or walk to school will enter through the east doors.</li> <li>Students may not enter the cafeteria in the morning (breakfast serving is addressed in the Food Service section).</li> <li>Students will not be allowed into school buildings in the mornings until 8:00 a.m. unless they have made arrangements with a specific teacher or sponsor or are eating breakfast</li> <li>Students in grades 7-12 will be required to wear face masks to enter the building.</li> <li>Students will be screened upon entering the building.</li> <li>All students who ride bus transportation will enter through the south doors of the east gym.</li> <li>All students who enter will be temperature screened upon arrival.</li> <li>Students 7-12 will remain in the east gym regardless of eating school breakfast or not until the 1<sup>st</sup> bell.</li> <li>Students are expected to apply hand sanitizer upon entering the building, and after every transition. Hand sanitizer will be available in every classroom.</li> <li>All elementary students will remain in the east commons for breakfast or awaiting transportation to the elementary.</li> </ul> <p><b><u>Student Exit @ High School</u></b></p> <ul style="list-style-type: none"> <li>All 7-12 students who participate in activities, drive or walk will be dismissed at the bell.</li> <li>All other 7-12 students remaining for bus transportation will be dismissed by an “all call” from the office after that first group.</li> <li>Students are not allowed to hang out in the hallways before reporting to class.</li> <li>Student assemblies will not be conducted unless 6’ social distancing can be maintained throughout the assembly.</li> </ul> <p><b><u>Student Entrance at the Elementary School:</u></b></p> <ul style="list-style-type: none"> <li>See the plan listed in a previous section.</li> </ul>		<ul style="list-style-type: none"> <li>Logistics and transitions for daily physical operations of school are not applicable due to the closure of facilities to students until the school is no longer in the Severe Spread mode.</li> </ul>



**District OR-1: Home of the Panthers!!**

	<b>Elementary</b>	<b>High School</b>
<b>Green Dial</b>	<ul style="list-style-type: none"> <li>• Students move through hallways as usual.</li> <li>• Frequent hand washing and sanitizing.</li> <li>• Teachers wash/sanitize classroom tables during school day.</li> <li>• Recess as usual with handwashing/hand sanitizer prior to going to playground and upon entry to building</li> <li>• Standard attendance policies unless a plan is developed for specific students</li> <li>• Minimize use of shared equipment and school supplies, sanitize between use</li> </ul>	<ul style="list-style-type: none"> <li>• Students exit school using the closest exit.</li> <li>• Regular passing periods.</li> <li>• Frequent sanitizing and handwashing.</li> <li>• Standard attendance policies unless a plan is developed for specific students.</li> <li>• Minimize use of shared equipment and supplies and/or cleaning/sanitizing between use.</li> <li>• No water fountain use. Bottle filling stations are available and students will bring their own water containers.</li> </ul>
<b>Yellow Dial</b>	<ul style="list-style-type: none"> <li>• Classrooms move through hallways as noted by directions/arrows while maintaining social distancing.</li> <li>• No visitors or volunteers to the building.</li> <li>• Frequent hand washing and sanitizing.</li> <li>• Teachers wash/sanitize classroom tables during school day.</li> <li>• Parent/guardian meetings via video conferencing</li> <li>• Student pick up-parent/adults stay in the entryway.</li> <li>• Staff meetings conducted with 6+ ft of social distancing and face coverings or virtual.</li> <li>• Recess by classroom with hand hygiene upon entry to the building.</li> <li>• Standard attendance policies unless a plan is developed for specific students.</li> <li>• Individualized school equipment and school supplies, disinfected</li> </ul>	<ul style="list-style-type: none"> <li>• Staff/Students maintain social distancing in line and upon entering.</li> <li>• Students will exit the closest exit immediately after school/upon completion of responsibilities.</li> <li>• One-way directional movement in halls during passing periods and before/after school.</li> <li>• Parents/guardians enter the building only by administrative permission.</li> <li>• Parents arriving to pick up students will wait in vehicle or vestibule for students to exit the building.</li> <li>• Staff meetings conducted with 6+ ft. of social distancing and face coverings or virtual.</li> <li>• No field trips.</li> <li>• Standard attendance policies unless a plan is developed for specific students.</li> <li>• Individualized school equipment and school supplies and disinfect between uses. (devices, PE equipment, art supplies, etc.)</li> <li>• No water fountain use. Use bottle filling stations or students will bring their own water containers.</li> <li>• Students are all seated and facing the same direction in classrooms with a goal of 3-6 ft. social distancing.</li> </ul>



**District OR-1: Home of the Panthers!!**

		<ul style="list-style-type: none"> <li>● Staff work areas at half capacity.</li> </ul>
<b>Orange</b>	<ul style="list-style-type: none"> <li>● No student movement, teachers rotate between classes.</li> <li>● Scheduled bathroom breaks by grade level/classroom.</li> <li>● Classrooms will follow noted direction in hallways and maintain social distancing.</li> <li>● Staggered exit at the end of the day via grade level doors.</li> <li>● Teachers wash/sanitize classroom tables during school day.</li> <li>● Parent/guardian meetings via video conferencing.</li> <li>● Student pick up-parent/adults stay in the entryway.</li> <li>● No assemblies or field trips.</li> <li>● Staff meetings via video conferencing0</li> <li>● Outdoor recess when feasible grouped by classroom with enhanced social distancing, reduced sharing of play equipment, and hand hygiene upon entry to the building.</li> <li>● Standard attendance policies unless a plan is developed for specific students0</li> <li>● Individualized school equipment and school supplies, disinfected between uses.</li> <li>● Staff workrooms closed for group events and gatherings0</li> </ul>	<ul style="list-style-type: none"> <li>● Staff/Students enter the building maintaining social distancing in line and upon entering.</li> <li>● Students proceed directly to their classroom. Students are not allowed to be in common areas (halls, cafeteria, gymnasiums, etc.) before/after school.</li> <li>● Students will exit the closest exit immediately after school/upon completion of responsibilities.</li> <li>● One-way directional movement in halls during passing periods and before/after school.</li> <li>● Student release staggered with 6 feet of social distancing maintained at all times for passing periods and dismissal at the end of the day.</li> <li>● Students will not utilize locker spaces and may not linger in hallways during passing.</li> <li>● No visitors or volunteers to the building.</li> <li>● Parents/guardians enter the building only by administrative permission.</li> <li>● Parents arriving to pick up students will wait in vehicle.</li> <li>● Frequent sanitizing and handwashing.</li> <li>● Large meetings will be facilitated electronically.</li> <li>● No shared equipment and supplies.</li> <li>● No water fountain use. Utilize bottle filling stations or students will bring their own water containers.</li> <li>● In classrooms, students are all seated and facing the same direction with a goal of 3-6 ft. of social distancing.</li> </ul>



**District OR-1: Home of the Panthers!!**



**Food Services:**

**Practices to follow for COVID-19 safety to provide students with breakfasts and lunches:**

- All food service staff will wear facemasks and other PPE appropriate to prevent COVID-19 spread.
- The food service staff, along with administration, will develop a system for providing individually-wrapped grab-and-go breakfasts to students.
  - Breakfasts will be prepared and placed in grab-and-go bags and made available to students at point-of-service stations in the mornings. Students will take breakfast bags with them and eat them in their classrooms.
- Lunch point-of-service will not involve any student self-service, such as salad bar or buffet.
  - Food service staff will dish food onto students’ trays at least 6’ away from where students/staff stand to be served.
  - Seconds and a’ la carte food options will be prepackaged for students to request at the original point of service.
  - The staff member responsible for tracking point-of-sale meals will enter students’ ID rather than each student typing his/her own code.
  - Students are allowed to bring their own lunches to school and can eat their own lunches in the same manner, and with the same provisions, as students who eat school lunches.

**Additional provisions for Green or Yellow Spread mode:**

- Students in preschool will have their meals pre-packaged and delivered to their classroom.
- After elementary lunch times in the classrooms conclude, food service and custodial staff will come to each classroom to collect trays for cleaning and waste for disposal.
- Elementary fruit & veggie options will be placed in individual student baggies so that students do not touch or breathe on other students’ snacks.

**Additional provisions for High Spread mode:**

- Students (grades 7-12) will walk to the lunchroom, receive their filled tray with a tray cover, and bring it back to their homeroom to eat.
- Lunch serving times to/from each secondary class will be staggered to help ensure social distancing.
- After secondary lunch times in the classrooms conclude, food service and custodial staff will come to each classroom to collect trays for cleaning and waste for disposal.
- Configuration of the lunchroom to be used for effective social distancing for grade 6-12 students who eat lunch in the lunchroom.



### District OR-1: Home of the Panthers!!

<ul style="list-style-type: none"> <li>• Grades 6-12) will walk to the lunchroom to receive their food and eat in a socially-distanced manner in the lunchroom or commons area.</li> <li>• Secondary students will wear face masks as they transition to the lunchroom, receive their tray, and exit the lunchroom to their next class.</li> <li>• Face masks should only be removed after students are seated and during the time that they are eating.</li> <li>• The secondary class schedule may be adjusted, to the degree possible, to balance the number of 6-12 students at lunch.</li> </ul>	
---	--



## Cleaning Protocols

	District
<b>Green</b>	<ul style="list-style-type: none"> <li>• Proactive purchase of cleaning supplies (9 week supply):</li> <li>• Use electrostatic sanitizing gun in all classrooms and common spaces every 2-4 days</li> </ul>
<b>Yellow</b>	<ul style="list-style-type: none"> <li>• Set the heating ventilating &amp; air conditioning (HVAC) systems to enhance fresh air throughout the facility. Increase inventory of filters and replace more frequently (define increased frequency)</li> <li>• Proactive purchase of clearing supplies (9 week supply): <ul style="list-style-type: none"> <li>○ Use electrostatic sanitizing in all classrooms and common spaces every 1-2 days</li> </ul> </li> </ul>
<b>Orange</b>	<ul style="list-style-type: none"> <li>• Closely monitor the heating ventilating &amp; air conditioning (HVAC) systems to ensure fresh air flows in an efficient manner throughout the facility. Further increase inventory of filters and replace more frequently (define increased frequency)</li> </ul>





**District OR-1: Home of the Panthers!!**

	<ul style="list-style-type: none"> <li>Proactive purchase of clearing supplies (12 week supply):             <ul style="list-style-type: none"> <li>Use electrostatic sanitizing in all classrooms and common spaces every 1 day</li> </ul> </li> </ul>
<b>Red</b>	<ul style="list-style-type: none"> <li>Deep cleaning of the appropriate room(s)/building(s) with fogger and Cleaning Guidelines prior to occupancy. Shampoo floors. Change air filters on HVAC</li> </ul>



**Activities:**

- Hisk Risk Activities:** Cheerleading, Dance, Football, Wrestling
- Moderate Risk Activities:** Basketball, Soccer, Softball, Tennis, Volleyball
- Lower Risk Activities:** Cross Country, Golf, Track & Field

LOW SPREAD	MODERATE SPREAD	HIGH SPREAD	SEVERE SPREAD
<p><b><u>Practices to follow for COVID-19 safety with activities:</u></b></p> <ul style="list-style-type: none"> <li>For high school NSAA-governed activities, the District will follow the <a href="#">NSAA Return to Activities</a> document, or any additional forthcoming guidance from NSAA, as well as the provisions detailed below.</li> <li>Jr. high activities, that are the same activities as those covered by the NSAA for high school students, will follow the same guidelines for participation and public attendance as applied to NSAA-governed high school activities.</li> <li>Activities not governed by NSAA (e.g. FFA, NHS, Quiz Bowl, Student Council, etc.) shall follow the same guidelines for participation and public attendance as applied to NSAA-governed activities.</li> <li>Administration shall have the authority to limit the degree of physical interaction for activities, beyond NSAA guidance, if administration deems it appropriate to ensure safety based on community COVID-19 circumstances.</li> <li>Coaches and sponsors that intend to have morning before-school practices, will communicate with administration about how to ensure proper health screenings before the practice begins.</li> </ul>		<p>In-person activities, including practices and individual skill development, may discontinue until the school is no longer in the high spread mode.</p>	<p>No activities</p>



**District OR-1: Home of the Panthers!!**

<ul style="list-style-type: none"> <li>• Music concerts, public performances, banquets, fun nights, and other gatherings of people in school buildings for public performances may be discontinued during the pandemic.</li> </ul>			
<p>Additional provisions for <b>Green</b> or <b>Yellow</b> Spread mode:</p> <ul style="list-style-type: none"> <li>• For contests, administration will monitor the risk mode of the host school or visiting school to determine if local guidelines for competition are safe.</li> <li>• Contests for activities that are NSAA-governed events, such as play production, speech, and music contests, will be allowed to occur following NSAA guidelines.</li> <li>• Indoor public performances for those activities will not be allowed.</li> <li>• Virtual broadcasts of high school performances will be allowed if the students can properly social distance during the performance.</li> <li>• Outdoor public performances by activity groups, such as the band marching in a parade or playing at a football</li> </ul>	<p>Additional provisions for <b>Orange</b> Spread mode:</p> <ul style="list-style-type: none"> <li>• Field trips, college visits, and other student trips, as well as off-site community activities, are not allowed.</li> <li>• Outdoor public performances by activity groups, such as the band marching in a parade, will not be allowed.</li> <li>• Administration shall disallow a District-hosted contest to occur.</li> <li>• Teams and organizations are allowed to continue to practice following NSAA guidance and other provisions of this document.</li> <li>• If the District is in Low or Moderate spread, but administration determines that COVID-19 conditions of the visitor school(s)' community/communities to be in High Spread (or the equivalent for their health region),</li> </ul>		



**District OR-1: Home of the Panthers!!**

<p>game, will be allowed.</p> <ul style="list-style-type: none"> <li>● Spectators in attendance at activity contests are encouraged to wear facemasks, but doing so is not required.</li> <li>● Food served at home contests concessions must be limited to prepacked or premade items (e.g. popcorn can be premade and served, but cannot be made while it is being served).</li> <li>● Hot food service can be provided (such as hot dogs and hamburgers) but again must be premade and pre-wrapped.</li> <li>● Shared condiment containers cannot be available to the public to use.</li> <li>● Condiments need to be provided in individual packets, or applied by concessions workers at least 6’ behind the serving window.</li> <li>● No food can be prepared within 6’ of the serving window.</li> <li>● All concession workers must wear face masks at all times while</li> </ul>	<p>administration shall disallow the District-hosted contest to occur.</p> <ul style="list-style-type: none"> <li>● If the District is in Low or Moderate spread, but administration determines the COVID-19 conditions of a host or participating schools’ communities to be in High Spread (or the equivalent for their health region), administration shall disallow the District from participating in a contest at that host school.</li> </ul>		
--	--	--	--



**District OR-1: Home of the Panthers!!**

preparing or serving concession food. <ul style="list-style-type: none"> <li>Fundraiser meals sponsored by groups at activity contests, or as standalone fundraiser meals at the school, will not be allowed during the pandemic.</li> </ul>			
--	--	--	--

	Athletics	Fine Arts	Activities, Co-Curriculars, & Field Trips	External Facility Use
<b>Green</b>	<ul style="list-style-type: none"> <li>Practice &amp; Competition Season as Originally Scheduled</li> <li>Sanitary &amp; Safety Protocols</li> <li>Personnel: (Non-essential - Spectators and Vendors)</li> <li>Follow Sanitation &amp; Safety Protocols</li> <li>Transportation Guidelines (Essential Travel Personnel)</li> </ul>	<ul style="list-style-type: none"> <li>Activities as Originally scheduled</li> <li>Activity Practices with smaller groups, Competitions in Larger Venue Locations where they can Accommodate Spacing</li> <li>Personnel: (Non-essential - Spectators and vendors)</li> <li>Follow Sanitation &amp; Safety Protocols</li> <li>Transportation guidelines (Essential Travel Personnel)</li> </ul>	<ul style="list-style-type: none"> <li>Activities and Co-curricular activities as originally scheduled</li> <li>Follow Sanitation &amp; Safety Protocols</li> <li>No Field Trips 1st Semester</li> <li>No Assemblies 1st Semester</li> <li>Possibly Semester 2:</li> <li>Waivers signed by all families with specific Covid-19 language for fields trips</li> <li>Personnel: (Non-essential - Spectators and vendors)</li> <li>Transportation guidelines (Essential Travel</li> </ul>	<ul style="list-style-type: none"> <li>Facility Rental permissible depending on the level of risk associated with the activity(activity classifications noted above)</li> <li>Facility use for outside use is preferred over indoor use.</li> <li>Waiver signed by both organization and individual families with specific Covid-19 language</li> <li>Signage posted around facilities to inform the community of potential risk</li> </ul>



**District OR-1: Home of the Panthers!!**

			Personnel)	
<b>Yellow</b>	<ul style="list-style-type: none"> <li>Altered Schedule in place to reduce travel and exposure:</li> <li>Locker rooms are not available</li> <li>Reduced Attendance</li> <li>Personnel(Essential &amp; Media )</li> <li>STRIV Options for viewers</li> <li>Refer to Transportation Tenet for Guidelines (Essential Travel Personnel)</li> </ul>	<ul style="list-style-type: none"> <li>Film Musical with limited audience in accordance to Nebraska occupancy guidelines. DVD for purchase</li> <li>Locker/Dressing rooms are not available</li> <li>Film/Live Stream performances with limited audience in accordance with occupancy guidelines.</li> <li>Virtual options for quiz bowl and speech/debate</li> <li>Transportation Guidelines (Essential Travel Personnel)</li> </ul>	<ul style="list-style-type: none"> <li>No field trips</li> <li>No assemblies</li> <li>Locker/Dressing rooms are not available</li> <li>Transportation Guidelines (Essential Travel Personnel)</li> </ul>	<ul style="list-style-type: none"> <li>Facility Use limited to District OR1 Activities Only</li> </ul>
<b>Orange</b>	<ul style="list-style-type: none"> <li>Locker rooms are not available</li> <li>Personnel (Essential Personnel - Athletes, coaches, officials, event staff, medical staff, security)</li> </ul>	<ul style="list-style-type: none"> <li>Locker/Dressing rooms are not available</li> <li>Personnel (Essential - sponsors, students, event staff, medical staff, security)</li> <li>May move</li> </ul>	<ul style="list-style-type: none"> <li>No field trips</li> <li>No assemblies</li> <li>Locker/Dressing rooms are not available</li> <li>Transportation Guidelines (Essential Travel Personnel)</li> </ul>	<ul style="list-style-type: none"> <li>Possible Facility use restricted and/or cancelled for all activities:</li> <li>Varsity only, cancel all lower level practices</li> </ul>



**District OR-1: Home of the Panthers!!**

	<ul style="list-style-type: none"> <li>• Transportation Guidelines (Essential Travel Personnel)</li> <li>• Possible Cancellation of partial/entire athletic Programming</li> <li>• Cross Country, but not Football</li> <li>• Varsity, but cancel Lower levels</li> </ul>	<p>Events to Spring</p> <ul style="list-style-type: none"> <li>• Possible cancellations of partial/entire season</li> <li>• Film/Live Stream performances with no audience</li> <li>• Transition Activities for Quiz Bowl, Speech &amp; Debate to online format</li> <li>• Transportation Guidelines (Essential Travel Personnel)</li> </ul>		
--	---	--	--	--



**Instruction/ Class Size:**

LOW SPREAD	MODERATE SPREAD	HIGH SPREAD	SEVERE SPREAD
<p><b>Practices to follow for COVID-19 safety for class size and instruction:</b></p> <ul style="list-style-type: none"> <li>• Desks and workstations in classrooms and other learning areas will be socially distanced--preferably 6' apart, but if that is not possible, students will be distanced to the greatest degree possible.</li> <li>• The libraries will have protocol established to socially distance students when they visit the library. All books will be sanitized when returned before being placed back on the shelf for checkout.</li> </ul>			<p>Facilities will be closed to students, other than to check out and turn in items at the front offices, until the school is no longer in the Severe Spread mode:</p> <ul style="list-style-type: none"> <li>• The first week of closure will be</li> </ul>



**District OR-1: Home of the Panthers!!**

<p>Additional provisions <b>for Low or Moderate Spread mode:</b></p> <ul style="list-style-type: none"> <li>● Classrooms will be assigned with students at normal capacity, with reasonable health measures implemented to prevent the spread of COVID-19.</li> <li>● Shared school supplies will be limited to the degree possible, and when they are shared, items will be sanitized before exchanging from one student to another.</li> <li>● In the elementary building (grades PK-6) instruction will remain typical with the following conditions, as well as other provisions within this document: <ul style="list-style-type: none"> <li>○ Breakfast and lunch will be eaten in the classroom (more details about breakfast and lunch are provided in the Food Service section).</li> <li>○ Art will be taught in the elementary classrooms rather than in the art classroom. The Art teacher will travel between classrooms with materials on a cart.</li> <li>○ Band and recorder instruction will be provided, with chairs in the band room spaced out as much as possible.</li> <li>○ Computer instruction will be provided in the classroom on students' 1:1 Chromebooks and iPads.</li> <li>○ Vocal instruction will be taught in a larger room with students standing in the seating section at least 6' apart.</li> </ul> </li> <li>● In the secondary building (grades 7-12) instruction will remain typical with the following conditions, as well as other provisions within this document: <ul style="list-style-type: none"> <li>○ Students will follow a normal bell schedule, walking from class to class as usual between classes</li> <li>○ Breakfast will be eaten in the classroom (more details about breakfast and lunch is provided in the Food Service section).</li> <li>○ Lessons that are interactive in nature, such as Art projects and STEM activities, will be modified to better ensure social distancing and sanitizing of items between use by students.</li> <li>○ Band instruction will be provided, with chairs in the band room spaced out as much as possible.</li> <li>○ Vocal instruction will be provided, but will be taught in a larger room.</li> <li>○ "Remote learning" options for green, yellow, and orange "risk dial" levels will be made available for parents and families that meet criteria for qualification.</li> </ul> </li> </ul>	<p>Additional provisions <b>for High Spread mode:</b></p> <ul style="list-style-type: none"> <li>● In the elementary building (grades PK-6) the class size will be the same as it was for the Low or Moderate Spread mode.</li> <li>● The instruction model will remain largely the same as for the Low or Moderate Spread mode, with the exception that Art, Band, and/or Vocal will be taught differently or rescheduled based on administrative discretion.</li> <li>● Classrooms will continue to operate at normal capacity, with reasonable health measures implemented to prevent the spread of COVID-19.</li> <li>● In the secondary building (grades 7-12), instruction will move from direct interactive learning, to asynchronous online learning.</li> <li>● Instruction will be provided</li> </ul>	<p>considered days off for students (just like snow days).</p> <ul style="list-style-type: none"> <li>● If the Superintendent determines that the District is likely going to remain in Severe Spread for more than a week, he/she will notify students and staff that learning will transition to online learning from home.</li> <li>● During a closure, students will be allowed to check out their school-issued 1:1 Chromebooks</li> <li>● For families without internet, the district will work with those families to possibly provide internet hotspots, to the degree possible where they have signal.</li> <li>● The days that online learning from home shall occur will correspond with days students would have been in session on the Board-approved calendar.</li> <li>● Online learning from home will be required for all <u>students enrolled in our</u> district.</li> <li>● Online learning from home will include <u>mandatory assignments</u> that will <u>be graded and</u> entered into PowerSchool for students in grades 1-12.</li> </ul>
--	--	---



**District OR-1: Home of the Panthers!!**

	<p>online by teachers using various learning mediums, such as Google Classroom, Blackboard, Canvas, etc.</p> <ul style="list-style-type: none"><li>● Instruction and learning may not be live, but rather occur asynchronously.</li><li>● Students will be allowed to leave their rooms to work with special education teachers and other support service providers, on an individualized or small-group basis, following a schedule that prevents large group interactions.</li><li>● Students will need to supply their own headphones, ear phones, or ear buds so that they can listen to any audio instruction without disrupting other students.</li><li>● Teachers' online instructional workload for students will be comparably equal to the regular workload for</li></ul>	
--	---	--





**District OR-1: Home of the Panthers!!**

	in-person instruction. <ul style="list-style-type: none"> <li>Grades for assignments will be weighted comparably equal as for assignments during in-person instruction.</li> </ul>	
--	--	--



**Student Services/ SPED / 504:**

	Elementary	High School
<b>504's</b>	Plans will be developed to meet individual student needs.	Plans will be developed to meet individual student needs.
<b>Special Education</b>	Plans and services will meet all Rule 51 requirements.	Plans and services will meet all Rule 51 requirements.



**Technology:**

Access: Devices & Internet	Help Desk/Support	Professional Development for Staff, Students & Families
<ul style="list-style-type: none"> <li>Students in grades 4-12 will have access to Chromebooks.</li> <li>Canvas, Powerschool,</li> </ul>	<ul style="list-style-type: none"> <li>The number for tech support will be listed on the district website.</li> </ul>	<ul style="list-style-type: none"> <li>Training will be provided for staff, students, and families on how to access and utilize district technology resources.</li> </ul>



**District OR-1: Home of the Panthers!!**

and Planbook will be used to facilitate technology.		
---	--	--



**Transportation:**

<ul style="list-style-type: none"> <li>• Adults on the bus must wear face masks at all times while students are on the bus.</li> <li>• All passengers must wear face masks while on the bus, including activity trips. <ul style="list-style-type: none"> <li>○ If a parent does not want his/her child to wear a mask on the bus, the parent will be responsible for transporting the child to and from school, or to or from an activity.</li> </ul> </li> <li>• Students with a temperature above 100.4 may not ride the morning bus route.</li> <li>• All students and staff shall apply hand sanitizer as they enter the vehicle.</li> <li>• When doubling/tripling up is necessary, students from the same household will sit together.</li> <li>• A seating arrangement will be used and will be based on the order that students get on and off the bus (e.g. for AM routes, the first student on, sits at the back of the bus, the last student on, sits at the front of the bus). <ul style="list-style-type: none"> <li>○ To maintain consistent seating arrangements, students not assigned by administration to a specific route with a pickup/dropoff location, may not ride on that route (e.g. a group of students cannot ride to classmate's house for a birthday party, a group of students cannot ride a bus to be dropped of for religion class, ect.).</li> </ul> </li> <li>• Students shall disembark from front of the bus front to back to minimize exposure.</li> <li>• Drivers shall stay home if they have a fever or other COVID-19 related symptoms.</li> <li>• Surfaces will be sanitized after every route or trip.</li> </ul>	
<p>Additional provisions for <b>Low or Moderate</b> Spread mode:</p> <ul style="list-style-type: none"> <li>• Bus routes and activity trips will operate at full student capacity, with the reasonable health measures above implemented to prevent the spread of COVID-19.</li> </ul>	<p><b>Additional provisions for High Spread mode:</b></p> <ul style="list-style-type: none"> <li>• Bus routes will generally operate at full student capacity, however student capacity may be reduced to the extent possible as determined by administration.</li> <li>• Heavily populated route families may be provided the option to bring their child(ren) to/from school rather than ride the bus.</li> <li>• Administration may consider using multiple vehicles for activity trips to better space students for large activity groups, if doing so is feasible.</li> <li>• If all certified drivers become suddenly unavailable due to COVID-19 related circumstances, clause 001.02A (iv) in</li> </ul>



**District OR-1: Home of the Panthers!!**

	NDE Rule 91 may be utilized, allowing for "...the operation of small vehicles in emergency situations when approved by the school administrator or person designated by the local governing school board."
--	--

	<p><b>Practices to follow for COVID-19 safe transportation:</b></p> <ul style="list-style-type: none"> <li>● Adults on the bus must wear face masks while students are on the bus.</li> <li>● All passengers must wear face masks while on the bus, including activity trips. <ul style="list-style-type: none"> <li>○ If a parent does not want his/her child to wear a mask on the bus, the parent will be responsible for transporting the child to and from school, or to or from an activity.</li> </ul> </li> <li>● Students with a temperature above 100.4 may not ride the morning bus route.</li> <li>● All students and staff shall apply hand sanitizer as they enter the vehicle.</li> <li>● When doubling/tripling up is necessary, students from the same household will sit together.</li> <li>● A seating arrangement will be used and will be based on the order that students get on and off the bus (e.g. for AM routes, the first student on, sits at the back of the bus, the last student on, sits at the front of the bus). <ul style="list-style-type: none"> <li>○ To maintain consistent seating arrangements, students not assigned by administration to a specific route with a pickup/dropoff location, may not ride on that route (e.g. a group of students cannot ride to classmate's house for a birthday party, a group of students cannot ride a bus to be dropped of for religion class, ect.).</li> </ul> </li> <li>● Students shall disembark from front of the bus front to back to minimize exposure.</li> <li>● Drivers shall stay home if they have a fever or other COVID-19 related symptoms.</li> <li>● Surfaces will be sanitized after every route or trip.</li> </ul>	
<b>Green</b>	<p>Additional provisions for <b>Low</b> or <b>Moderate</b> Spread mode:</p> <ul style="list-style-type: none"> <li>● Bus routes and activity trips will operate at full student capacity, with the reasonable health measures above implemented to prevent the spread of COVID-19.</li> </ul>	<p>Additional provisions for <b>High</b> Spread mode:</p> <ul style="list-style-type: none"> <li>● Bus routes will generally operate at full student capacity, however student capacity may be reduced to the extent possible as determined by administration.</li> <li>● Heavily populated route families may be provided the option to bring their child(ren) to/from school rather than ride the bus, and be paid mileage at administrative discretion.</li> <li>● Administration may consider using multiple buses for activity trips to better space students for large activity groups, if doing so is feasible.</li> </ul>



**District OR-1: Home of the Panthers!!**

		<ul style="list-style-type: none"><li>● If all certified drivers become suddenly unavailable due to COVID-19 related circumstances, clause 001.02A (iv) in NDE Rule 91 may be utilized, allowing for "...the operation of small vehicles in emergency situations when approved by the school administrator or person designated by the local governing school board."</li></ul>
<b>Yellow</b>	<ul style="list-style-type: none"><li>● Specific bus guidelines will be provided for Special Education Routes.</li><li>● Students and parents will be encouraged to self-screen for cold or flu-like symptoms prior to coming to the vehicle.</li><li>● Staff and students will apply hand sanitizer upon entering the vehicle when it is safe to do so as it relates to traffic.</li><li>● Maintain open windows to promote airflow on the vehicle when feasible (e.g., weather elements).</li><li>● If applicable, on extracurricular trips, students should space out and sit one per seat.</li><li>● All students and drivers wear face coverings during times when ~6 ft of social distancing is not feasible.</li><li>● Parents will be reminded of the opportunity to transport their own child in lieu of school bus transportation as a strategy to reduce bus density.</li><li>● Encourage parents to drop children off at school rather than ride the school bus to reduce bus density.</li></ul>	
<b>Orange</b>	<ul style="list-style-type: none"><li>● All vehicles will be sanitized between each use.</li><li>● Specific Guidelines will be provided for Special Education Routes.</li><li>● Students and parents will be encouraged to self-screen for cold or flu-like symptoms prior to coming to the vehicle.</li></ul>	



**District OR-1: Home of the Panthers!!**

	<ul style="list-style-type: none"> <li>● Staff and students will apply hand sanitizer upon entering/exiting the vehicle.</li> <li>● Maintain open windows to promote airflow on the vehicle when feasible (e.g., weather elements).</li> <li>● All students and drivers wear face coverings.</li> <li>● Parents will be reminded of the opportunity to transport their own child in lieu of school bus transportation as a strategy to reduce bus density.</li> <li>● Be prepared for a reduced bus capacity requirement of one student per seat if the dial moves to deep orange and/or take other steps to reduce bus density.             <ul style="list-style-type: none"> <li>○ Staff will mark seats for student seating to promote social distancing (row 1 = window seat; row 2 = isle; alternate by left/right side of bus).</li> <li>○ Consider running multiple back-to-back routes to reduce bus density.</li> </ul> </li> <li>● Encourage parents to drop children off at school rather than ride the school bus to reduce bus density.</li> </ul>	
--	--	--



**Personnel:**

LOW or MODERATE SPREAD	HIGH SPREAD	SEVERE SPREAD
<p><b>Practices to follow for COVID-19 safety with staff members:</b></p> <ul style="list-style-type: none"> <li>● Staff members will be required to wear face masks at all risk levels and anytime they are in close contact with students, unless specified otherwise in this document.             <ul style="list-style-type: none"> <li>○ If a staff member has a plexiglass shield between him/herself and the student(s), then a face mask is not necessary.</li> </ul> </li> </ul>		<p>Practices to follow for COVID-19 safety with staff members:</p> <ul style="list-style-type: none"> <li>● In-person instruction will discontinue until the school is no longer in the Severe Spread mode.</li> </ul>



### **District OR-1: Home of the Panthers!!**

<ul style="list-style-type: none"> <li>● Staff members with temperatures of 100.4 or higher are to stay home until they are fever free for 24 hours without the assistance of pain medication. <ul style="list-style-type: none"> <li>○ Staff members with flu-like symptoms, including chills, cough, shortness of breath or difficulty breathing, fatigue, muscle or body aches, headache, new loss of taste or smell, sore throat, congestion or runny nose, nausea or vomiting, diarrhea, should consider staying home from school if symptoms are not obviously the result of explainable circumstances.</li> </ul> </li> <li>● The District will provide staff members with the PPE and protection they need to be safeguarded from virus exposure. <ul style="list-style-type: none"> <li>○ For staff members in a high risk category, PPE such as KN95 facemasks and face shields will be made available, to the extent that the District can find suppliers of such PPE.</li> <li>○ Staff members are entitled to accommodations and leave is applicable under law and policy (such as ADA, FMLA, and PTO or sick leave) however the fear of exposure is not itself a valid excuse to not report to work.</li> </ul> </li> <li>● Due to COVID-19, staff members may be assigned duties that are not typical to them, such as bus monitoring, extra lunch room duty, extra cleaning, etc.</li> </ul>	<ul style="list-style-type: none"> <li>● Based on the circumstances, the Superintendent, and potentially the School Board, will decide who can or should report to the school building to work.</li> </ul>
--	--



## **Staff and Student Wellness:**

Social and Emotional Supports are critical for students and staff as we continue to navigate the myriad of changes associated with the pandemic.

### **Resources For Educators and Families:**

- [COVID Coach](#) (Education about coping during the pandemic, mood trackers, and lots of great stress management techniques and exercises)
- [Headspace](#)
- [Insight Timer](#) (Free with thousands of guided meditations)
- [Mindfulness Coach](#)
- [PTSD Coach](#)
- [EHA](#)
- [Launch Nebraska](#)
- [WSCC](#)



## **District OR-1: Home of the Panthers!!**

- [Calming Room website](#)
- CDC Guidance [Talking with children about Coronavirus Disease 2019](#)
- [Healthier Generation](#)
- National [SHAPE](#)
- [COVID-19 Screener](#)



### **Health Services:**

**Health services will remain the same through all “Risk Dial” levels**



## **District OR-1: Home of the Panthers!!**

### **Practices to follow for COVID-19 safety with matters of custodial sanitation and the health of individuals in the District:**

- Students, staff, or visitors with temperatures of 100.4 or higher are to stay home until they are fever free for 24 hours without the assistance of medication.
  - Students, staff, or visitors with flu-like symptoms, including chills, cough, shortness of breath or difficulty breathing, fatigue, muscle or body aches, headache, new loss of taste or smell, sore throat, congestion or runny nose, nausea or vomiting, diarrhea, should consider staying home from school if symptoms are not obviously the result of explainable circumstances.
- If during the day a student becomes ill or develops a fever, they will be required to wear a mask and be placed in an isolated room.
  - Staff working with ill students are to wear a medical-grade-equivalent face mask, or KN95 if available, eye covering (glasses or a shield) and gloves while attending to the student.
  - After the student is picked up, the areas in which he/she was kept are to be thoroughly sanitized.
- Hand sanitizer dispensers will be available at main entrances to buildings, and at the entrance of each classroom or learning area.
  - Students are expected to apply hand sanitizer upon entering the building and after transitions.
- Cleaning supplies will be made available in all learning settings.
  - Students will be utilized by teachers/monitors as needed to sanitize their desks or station prior to transitioning to their next learning settings, or within their learning sessions as needed.
  - Commonly used classroom surfaces, such as door handles, will be sanitized multiple times daily by teachers, students, and/or custodial staff.
- Restrooms will be sanitized multiple times daily when school is in session.
  - Hand sanitizer shall be encouraged to be used before and after using the restroom.
  - Teachers and support staff shall promote effective hand-washing procedures upon students.
- Surfaces commonly touched in high-use common areas will be sanitized routinely.
- Students and staff are recommended to have their own water bottles that they can refill at water fountains. Students and staff are discouraged from drinking directly from water fountains.
- Recess and playground areas will have access to hand sanitizer.
  - Students are to apply hand sanitizer before and after using recess and playground areas.
  - Cleaning and sanitizing will continue to occur in areas of the school used by staff members while the school facilities are closed to students.
  - Thorough sanitizing of facilities will be conducted before students return for on-campus learning.
  -

### **Additional Roles of the Health Office Staff:**

- Continue to promote Good Hygiene Practices ( handwashing, covering coughs and sneezes, staying home when ill, social distancing, ) with students and staff.
- Assist with screening absentee calls from parents and follow-up on reports of Covid-19 symptoms in students.
- Document all student office visits.
- If a family has had an exposure to Covid or has a positive COVID test result offer ongoing support (make formal contact).
- Work with local Health Departments on all positive COVID cases.





**District OR-1: Home of the Panthers!!**



**Face Covering Basics:**

	District
<p><b>Face Covering Basics</b></p>	<ul style="list-style-type: none"> <li>● <u>Criteria for Self-Provided Face Coverings:</u> <ul style="list-style-type: none"> <li>○ Multilayer cloth or disposable face covering.</li> <li>○ Must cover the nose and mouth.</li> <li>○ No inappropriate images or messages.</li> <li>○ Fits snugly and comfortably around the side of the face.</li> </ul> </li> <li>● <u>The following face covering wear and care procedures will be promoted to students and staff:</u> <ul style="list-style-type: none"> <li>○ Face coverings should be placed over the nose and mouth while being worn and secured with ties, ear loops or elastic bands that fit around the head.</li> <li>○ Face coverings should fit snugly and comfortably around the side of the face.</li> <li>○ Wash or sanitize hands before putting a face covering on and after taking it off.</li> <li>○ Try to avoid touching your face covering as much as possible.</li> <li>○ Remove face covering by lifting it off of ear loops without touching the front of the mask on your face.</li> <li>○ Regularly wash face coverings with soap and water or in the washing machine with detergent (or as otherwise directed by the manufacturer of the face covering). We recommend that cloth face coverings are washed daily.</li> <li>○ <b>Mask Storage:</b> Carefully fold the mask so the contaminated outside is folded inward and against itself. Place in a clean or new bag.</li> </ul> </li> <li>● <u>Scenarios where a student or staff member may not be able to wear a face covering:</u> <ul style="list-style-type: none"> <li>○ Those with a disability that prevents them from comfortably wearing or removing a face covering.</li> <li>○ Those with certain medically documented respiratory conditions or trouble breathing.</li> </ul> </li> </ul>

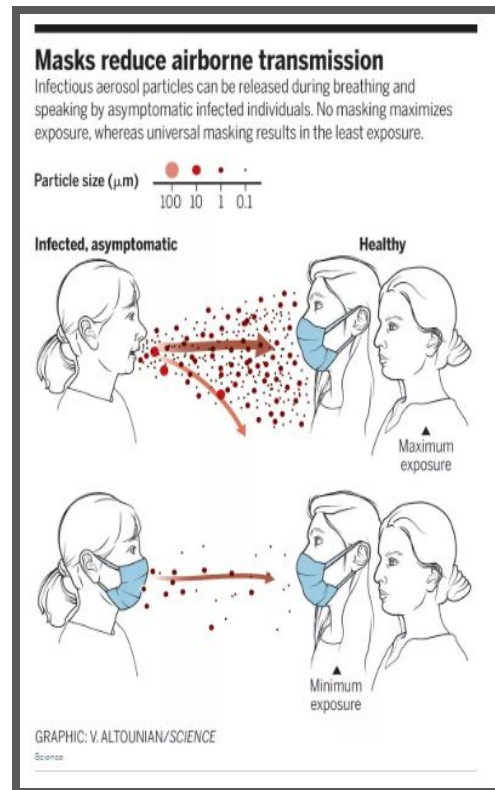
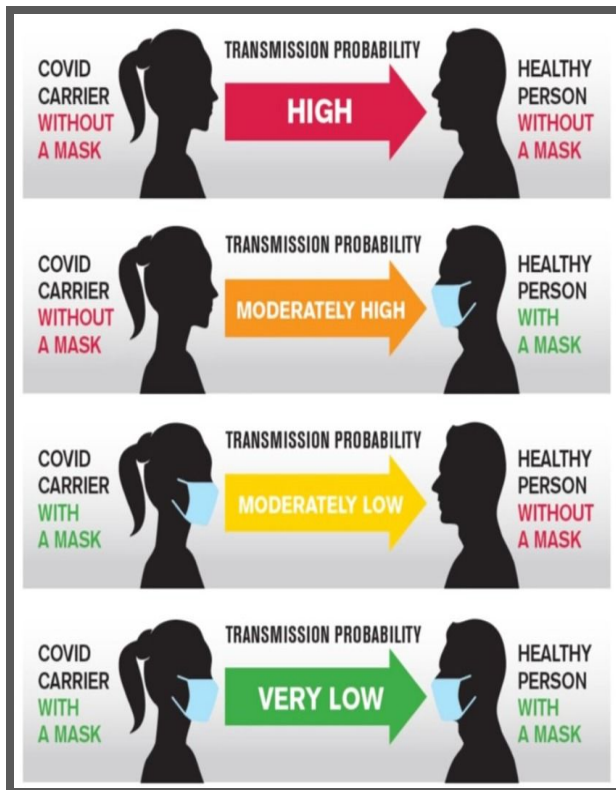


**District OR-1: Home of the Panthers!!**

	<ul style="list-style-type: none"><li>○ Those who are deaf or hard of hearing and use facial and mouth movements as part of communication.</li><li>○ Those advised by a medical or behavioral health professional that wearing a face covering may pose a risk to that person.</li></ul> <p><b>Note:</b> Face shields should be considered as a secondary option when a student or staff member is unable to wear a face covering.</p> <p><b>Note:</b> Those unable to wear face coverings or face shields may be required to complete additional screening procedures (e.g., daily temperature).</p>
<b>Green</b>	<ul style="list-style-type: none"><li>● Face coverings will be <u>required for staff</u> and mask use for students in the green level is strongly recommended.</li><li>● Each student and staff member will receive face coverings. Students and staff may also furnish their own face covering provided they meet the basic criteria.</li><li>● School nurses will be provided N95 fit-tested masks or surgical masks and reusable face shields.</li></ul>
<b>Yellow</b>	<ul style="list-style-type: none"><li>● Face coverings are expected to be worn by all K-12 students and staff except when the following circumstances exist:<ul style="list-style-type: none"><li>○ While eating lunch;</li><li>○ When at least 6 feet of social distancing from others is possible in an indoor setting;</li><li>○ While working privately in an office or conference room;</li><li>○ During physical education class (assuming an emphasis on physical distancing and/or outdoor activity);</li><li>○ When separated by a physical barrier from others (e.g., plexiglass divider);</li><li>○ While outdoors when at least 3+ feet of social distancing is provided.</li></ul></li><li>● Face coverings are required for all school visitors.</li><li>● Face shields (or clear face coverings) will be provided as appropriate for students and staff being served in specialized programs or with documented health needs and/or settings (e.g., Speech Language). A face shield is not a replacement for a mask.</li><li>● <b>Note:</b> School staff will look for intentional opportunities during the school day to create safe opportunities for students to remove face coverings (e.g., creating sufficient physical distancing, outdoor time, etc.).</li><li>● <b>Note:</b> There is an understanding that with the use of face coverings at lower grade levels (e.g., K-1), may be developmentally difficult for some students. Nothing about the mask expectation is intended to preclude elementary school administrators or teachers from intentionally scaffolding and building face covering stamina and routines over time so long as the overarching intent is conceptually consistent with the universal face covering protocol.</li></ul>



## District OR-1: Home of the Panthers!!



*“My face covering protects you and your face covering protects me.”*

### Additional Resources for Parents and the Community:



- Nebraska Department of Education ([Launch Nebraska](#))
- Centers for Disease Control ([CDC](#))



**District OR-1: Home of the Panthers!!**



- Lincoln-Lancaster County Health Department ([LLCHD](#))
- Nebraska School Activities Association ([NSAA](#))
- Nebraska Department of Health and Human Services ([DHHS](#))
- Educational Service Unit #4 ([ESU4](#))
- Southeast District Health Department. ([SEDHD](#))
- [COVID-19 Symptom Checker](#)
- [COVID-19 Resources for School Nurses](#)
- [Autism Little Learners](#)
- <https://www.autismresourcecentral.org/social-stories-for-young-and-old-on-covid19/>
- <https://www.cdc.gov/coronavirus/2019-ncov/community/schools-childcare/symptom-screening.htm>



**District OR-1: Home of the Panthers!!**

